



SZABO SCANDIC

Part of Europa Biosite

Produktinformation



Forschungsprodukte & Biochemikalien



Zellkultur & Verbrauchsmaterial



Diagnostik & molekulare Diagnostik



Laborgeräte & Service

Weitere Information auf den folgenden Seiten!
See the following pages for more information!



Lieferung & Zahlungsart

siehe unsere [Liefer- und Versandbedingungen](#)

Zuschläge

- Mindermengenzuschlag
- Trockeneiszuschlag
- Gefahrgutzuschlag
- Expressversand

SZABO-SCANDIC HandelsgmbH

Quellenstraße 110, A-1100 Wien

T. +43(0)1 489 3961-0

F. +43(0)1 489 3961-7

mail@szabo-scandic.com

www.szabo-scandic.com

[linkedin.com/company/szaboscandic](https://www.linkedin.com/company/szaboscandic) 



UK Office

Everest Biotech Ltd

Cherwell Innovation Centre
77 Heyford Park
Upper Heyford
Oxfordshire
OX25 5HD
UK

Enquiries:

info@everestbiotech.com

Sales:

sales@everestbiotech.com

Tech support:

support@everestbiotech.com

Tel: +44 (0)1869 238326

Fax: +44 (0)1869 238327

US Office

Everest Biotech c/o Abcore

405 Maple Street, Suite A106
Ramona,
CA 92065
USA

Inquiries:

info@everestbiotech.com

Sales:

usasales@everestbiotech.com

Tech support:

support@everestbiotech.com

Tel: 888-320-4628 (toll-free)

Fax: 888-841-9041

www.everestbiotech.com

**Research Use Only. Not for
diagnostic or therapeutic use.**

EB07258 - Goat Anti-Doublecortez / DCX Antibody

Size: 100µg specific antibody in 200µl



Target Protein

Principal Names: DCX, doublecortez, lissencephaly, X-linked (doublecortin), RP5-914P14.1, DBCN, DC, LISX, SCLH, XLIS, OTTHUMP00000062892, doublecortin, doublin, lissencephalin-X

Official Symbol: DCX

Accession Number(s): NP_000546.2; NP_835365.1; NP_835364.1; NP_835366.1

Human GeneID(s): [1641](#)

Important Comments: This antibody is expected to recognise isoform a (NP_000546.2), isoform b (NP_835365.1), and isoform c (NP_835364.1 and NP_835366.1).

Immunogen

Peptide with sequence C-KASPTPQKTSKSPG, from the internal region of the protein sequence according to NP_000546.2; NP_835365.1; NP_835364.1; NP_835366.1.

Please note the [peptide](#) is available for sale.

Purification and Storage

Purified from goat serum by ammonium sulphate precipitation followed by antigen affinity chromatography using the immunizing peptide.

Supplied at 0.5 mg/ml in Tris saline, 0.02% sodium azide, pH7.3 with 0.5% bovine serum albumin.

Aliquot and store at -20°C. Minimize freezing and thawing.

Applications Tested

Peptide ELISA: antibody detection limit dilution 1:128000.

Western blot: Approx 45kDa band observed in Mouse fetal Brain lysates (calculated MW of 40.6kDa according to Mouse NP_001103692.1). Recommended concentration: 0.003-0.01µg/ml. Primary incubation 1 hour at room temperature.

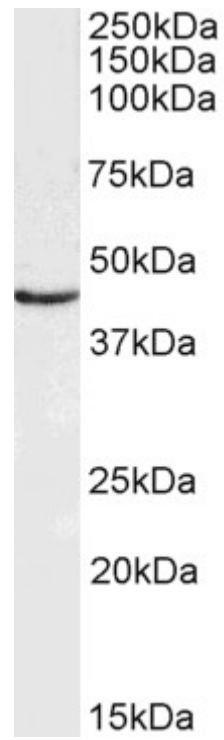
IHC: Paraffin embedded Human Brain (Cortex). Recommended concentration: 7µg/ml.

Immunofluorescence: Strong expression of the protein seen in the cytoplasm of NIH3T3 cells. Recommended concentration: 5µg/ml.

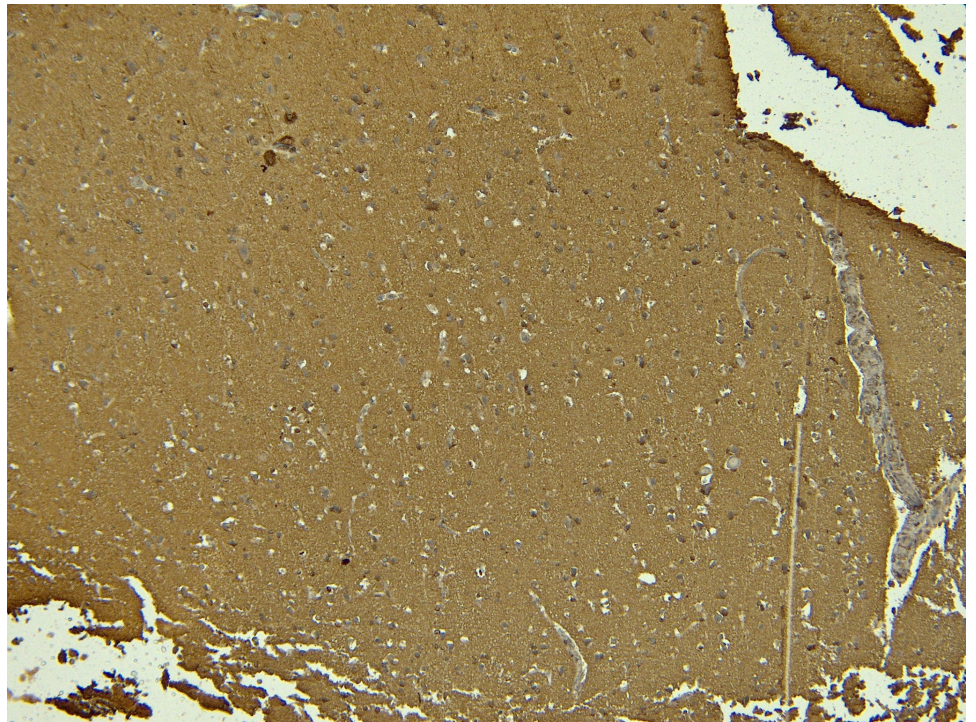
Species Reactivity

Tested: Human, Mouse

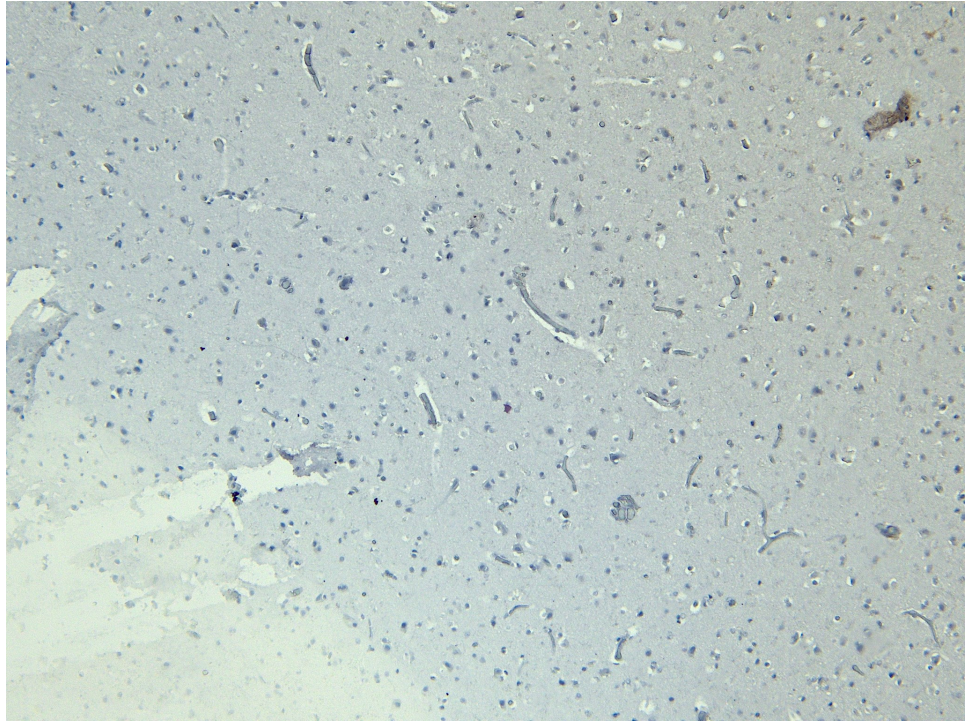
Expected from sequence similarity: Human; Mouse, Rat, Dog, Cat



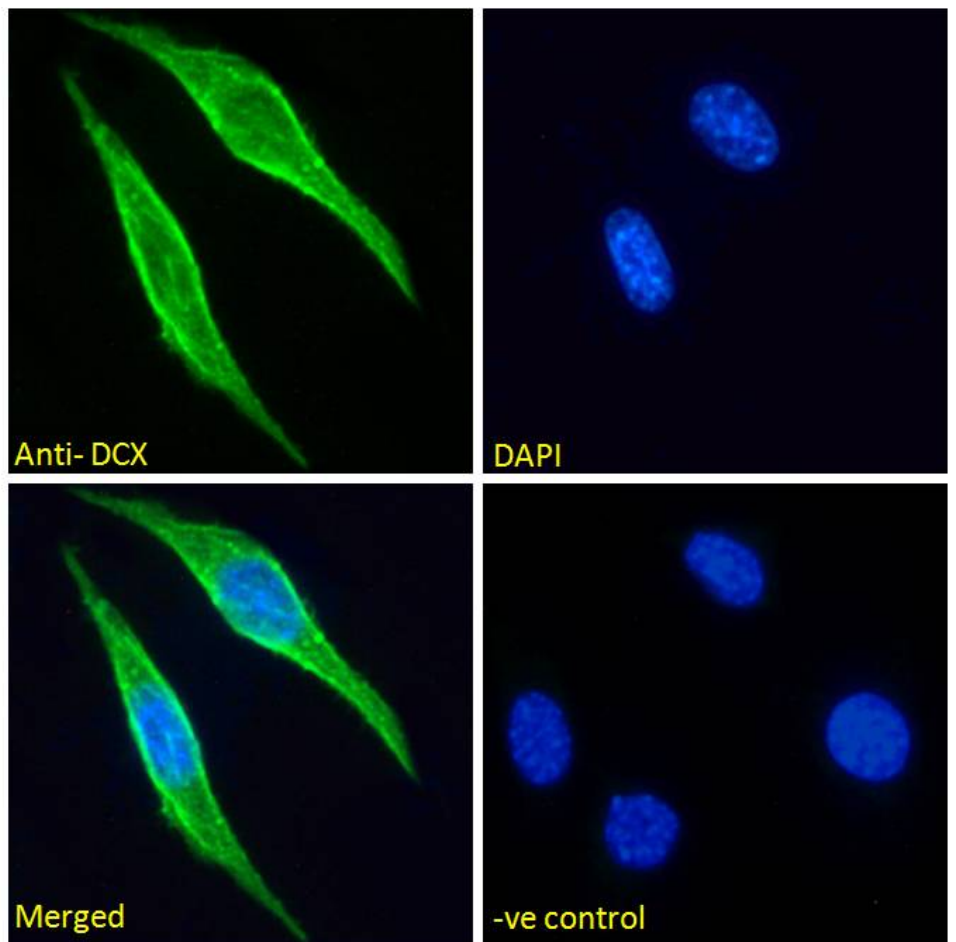
EB07258 (0.003 μ g/ml) staining of Mouse fetal Brain lysate (35 μ g protein in RIPA buffer). Detected by chemiluminescence.



EB07258 (7 μ g/ml) staining of paraffin embedded Human Cortex. Heat induced antigen retrieval with citrate buffer pH 6, HRP-staining.



EB07258 Negative Control showing staining of paraffin embedded Human Cortex, with no primary antibody.



EB07258 Immunofluorescence analysis of paraformaldehyde fixed NIH3T3 cells, permeabilized with 0.15% Triton. Primary incubation 1hr (5ug/ml) followed by Alexa Fluor 488 secondary antibody (2ug/ml), showing cytoplasmic staining. The nuclear stain is DAPI (blue). Negative control: Unimmunized goat IgG (5ug/ml) followed by Alexa Fluor 488 secondary antibody (2ug/ml).