



SZABO SCANDIC

Part of Europa Biosite

Produktinformation



Forschungsprodukte & Biochemikalien



Zellkultur & Verbrauchsmaterial



Diagnostik & molekulare Diagnostik



Laborgeräte & Service

Weitere Information auf den folgenden Seiten!
See the following pages for more information!



Lieferung & Zahlungsart

siehe unsere [Liefer- und Versandbedingungen](#)

Zuschläge

- Mindermengenzuschlag
- Trockeneiszuschlag
- Gefahrgutzuschlag
- Expressversand

SZABO-SCANDIC HandelsgmbH

Quellenstraße 110, A-1100 Wien

T. +43(0)1 489 3961-0

F. +43(0)1 489 3961-7

mail@szabo-scandic.com

www.szabo-scandic.com

[linkedin.com/company/szaboscandic](https://www.linkedin.com/company/szaboscandic) 



UK Office

Everest Biotech Ltd

Cherwell Innovation Centre
77 Heyford Park
Upper Heyford
Oxfordshire
OX25 5HD
UK

Enquiries:

info@everestbiotech.com

Sales:

sales@everestbiotech.com

Tech support:

support@everestbiotech.com

Tel: +44 (0)1869 238326

Fax: +44 (0)1869 238327

US Office

Everest Biotech c/o Abcore

405 Maple Street, Suite A106
Ramona,
CA 92065
USA

Inquiries:

info@everestbiotech.com

Sales:

usasales@everestbiotech.com

Tech support:

support@everestbiotech.com

Tel: 888-320-4628 (toll-free)

Fax: 888-841-9041

www.everestbiotech.com

**Research Use Only. Not for
diagnostic or therapeutic use.**

EB07294 - Goat Anti-NMDAR2B / GRIN2B Antibody

Size: 100µg specific antibody in 200µl



Target Protein

Principal Names: GRIN2B, NMDAR2B, glutamate receptor, ionotropic, N-methyl D-aspartate 2B, HGNC:4586, NR2B, hNR3, N-methyl-D-aspartate receptor subunit 2B

Official Symbol: GRIN2B

Accession Number(s): NP_000825.1

Human GeneID(s): [2904](#)

Non-Human GeneID(s): 14812 (mouse), 24410 (rat)

Immunogen

Peptide with sequence C-KDAHEKDDFHLS, from the internal region of the protein sequence according to NP_000825.1.

Please note the [peptide](#) is available for sale.

Purification and Storage

Purified from goat serum by ammonium sulphate precipitation followed by antigen affinity chromatography using the immunizing peptide.

Supplied at 0.5 mg/ml in Tris saline, 0.02% sodium azide, pH7.3 with 0.5% bovine serum albumin.

Aliquot and store at -20°C. Minimize freezing and thawing.

Applications Tested

Peptide ELISA: antibody detection limit dilution 1:16000.

Western blot: Approx 170kDa band observed in Rat Brain lysates (calculated MW of 166kDa according to NP_000825.1). Recommended concentration: 2-4µg/ml. Primary incubation was 1 hour.

Immunofluorescence: Strong expression of the protein seen in the cytoskeleton/ cytoplasm of HeLa cells. Recommended concentration: 10µg/ml.

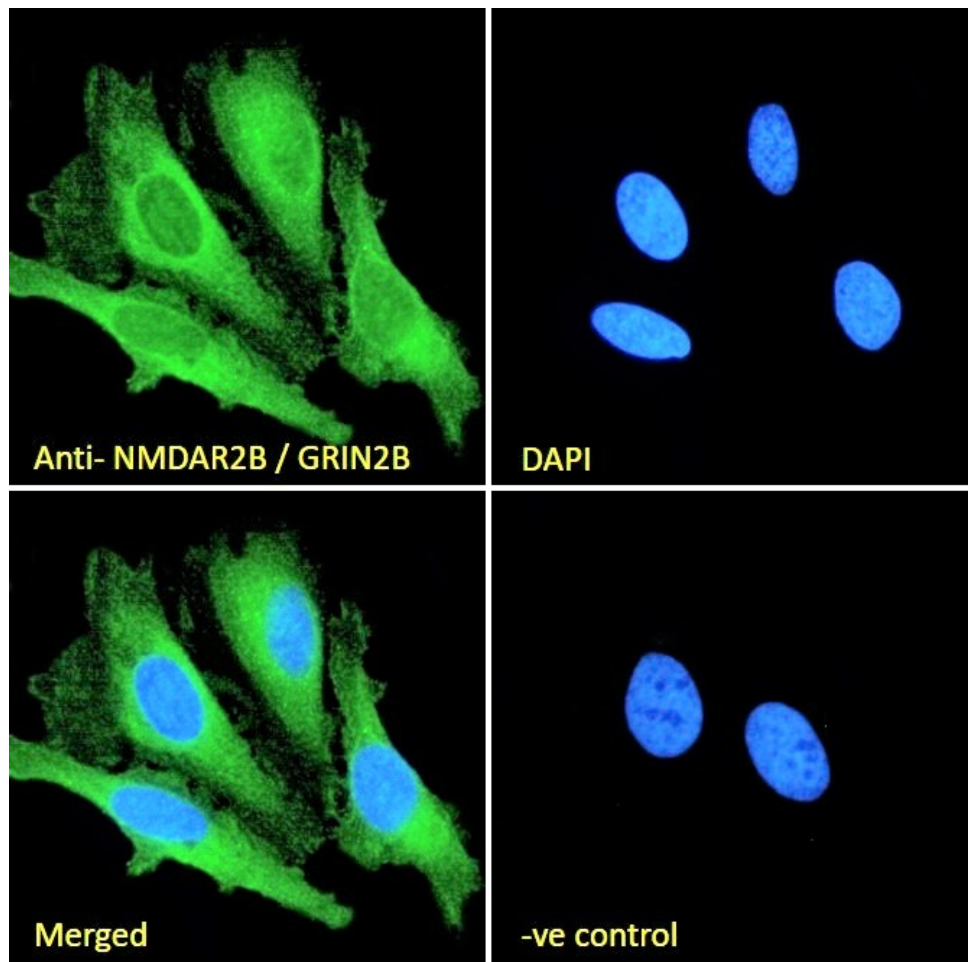
Species Reactivity

Tested: Human, Rat

Expected from sequence similarity: Human, Mouse, Rat, Dog

250kDa
150kDa
100kDa
75kDa
50kDa
37kDa
25kDa
20kDa
15kDa
10kDa

EB07294 (2µg/ml) staining of Rat Brain lysate (35µg protein in RIPA buffer). Detected by chemiluminescence.



EB07294 Immunofluorescence analysis of paraformaldehyde fixed HeLa cells, permeabilized with 0.15% Triton. Primary incubation 1hr (10ug/ml) followed by Alexa Fluor 488 secondary antibody (2ug/ml), showing cytoskeleton and cytoplasmic staining. The nuclear stain is DAPI (blue). Negative control: Unimmunized goat IgG (10ug/ml) followed by Alexa Fluor 488 secondary antibody (2ug/ml).