



# SZABO SCANDIC

Part of Europa Biosite

## Produktinformation



Forschungsprodukte & Biochemikalien



Zellkultur & Verbrauchsmaterial



Diagnostik & molekulare Diagnostik



Laborgeräte & Service

Weitere Information auf den folgenden Seiten!  
See the following pages for more information!



### Lieferung & Zahlungsart

siehe unsere [Liefer- und Versandbedingungen](#)

### Zuschläge

- Mindermengenzuschlag
- Trockeneiszuschlag
- Gefahrgutzuschlag
- Expressversand

### SZABO-SCANDIC HandelsgmbH

Quellenstraße 110, A-1100 Wien

T. +43(0)1 489 3961-0

F. +43(0)1 489 3961-7

[mail@szabo-scandic.com](mailto:mail@szabo-scandic.com)

[www.szabo-scandic.com](http://www.szabo-scandic.com)

[linkedin.com/company/szaboscandic](https://www.linkedin.com/company/szaboscandic) 



## UK Office

### Everest Biotech Ltd

Cherwell Innovation Centre  
77 Heyford Park  
Upper Heyford  
Oxfordshire  
OX25 5HD  
UK

Enquiries:

[info@everestbiotech.com](mailto:info@everestbiotech.com)

Sales:

[sales@everestbiotech.com](mailto:sales@everestbiotech.com)

Tech support:

[support@everestbiotech.com](mailto:support@everestbiotech.com)

Tel: +44 (0)1869 238326

Fax: +44 (0)1869 238327

## US Office

### Everest Biotech c/o Abcore

405 Maple Street, Suite A106  
Ramona,  
CA 92065  
USA

Inquiries:

[info@everestbiotech.com](mailto:info@everestbiotech.com)

Sales:

[usasales@everestbiotech.com](mailto:usasales@everestbiotech.com)

Tech support:

[support@everestbiotech.com](mailto:support@everestbiotech.com)

Tel: 888-320-4628 (toll-free)

Fax: 888-841-9041

[www.everestbiotech.com](http://www.everestbiotech.com)

**Research Use Only. Not for  
diagnostic or therapeutic use.**

## EB07306 - Goat Anti-Radixin Antibody

Size: 100µg specific antibody in 200µl



### Target Protein

**Principal Names:** RDX, radixin

**Official Symbol:** RDX

**Accession Number(s):** NP\_002897.1

**Human GeneID(s):** [5962](#)

**Non-Human GeneID(s):** 19684 (mouse), 315655 (rat)

### Immunogen

Peptide with sequence C-QARDETKKTQND, from the internal region of the protein sequence according to NP\_002897.1.

Please note the [peptide](#) is available for sale.

### Purification and Storage

Purified from goat serum by ammonium sulphate precipitation followed by antigen affinity chromatography using the immunizing peptide.

Supplied at 0.5 mg/ml in Tris saline, 0.02% sodium azide, pH7.3 with 0.5% bovine serum albumin.

Aliquot and store at -20°C. Minimize freezing and thawing.

### Applications Tested

**Peptide ELISA:** antibody detection limit dilution 1:4000.

**Western blot:** Approx 80kDa band observed in Human Lymph Node, Tonsil and Spleen lysates (calculated MW of 68.6kDa according to NP\_002897.1). The same 80kDa was also observed in lysates of several Mouse and Rat tissues and in lysates of cell lines NIH3T3, HeLa, Jurkat, and A431. The observed molecular weight corresponds to earlier findings in literature (Magendantz et al, J Biol Chem. 1995 Oct 27;270(43):25324-7. PMID: 7592691). Recommended concentration: 0.01-0.03µg/ml. Primary incubation was 1 hour.

**IHC:** Paraffin embedded Human Placenta and Kidney. Recommended concentration: 2.5µg/ml.

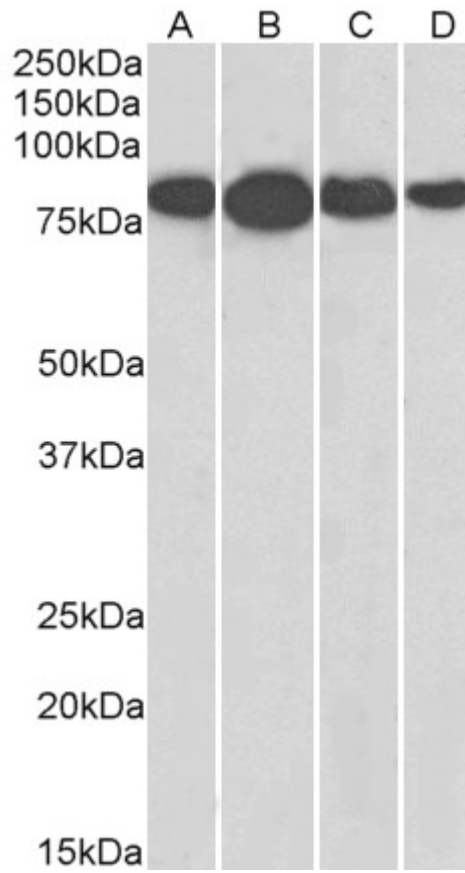
### Species Reactivity

**Tested:** Human, Mouse, Rat

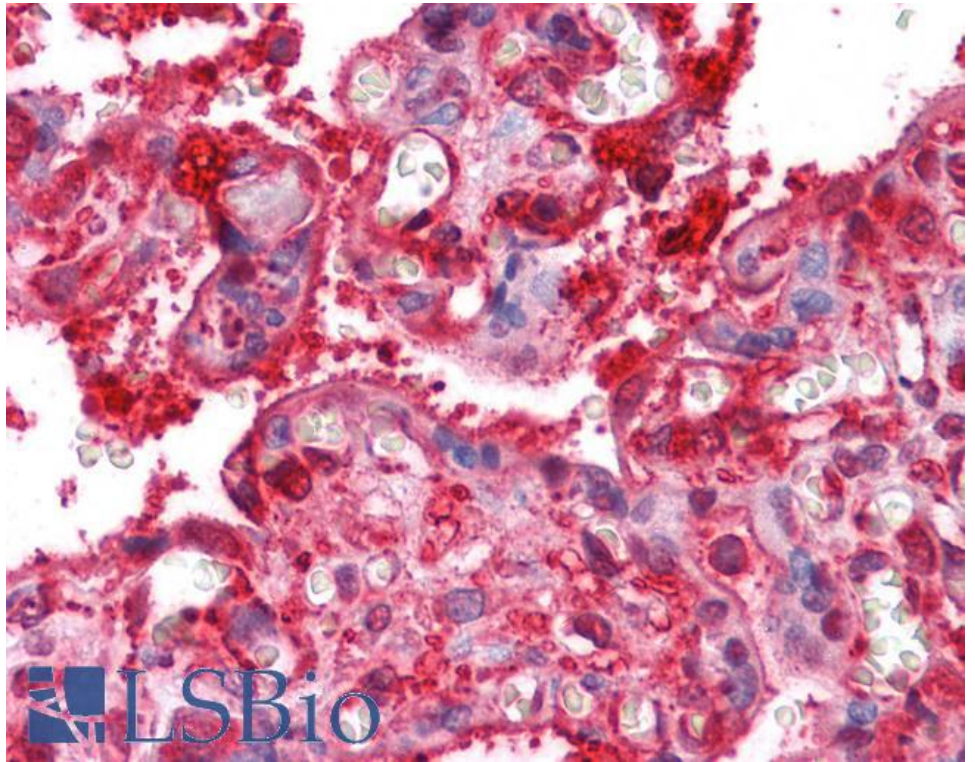
**Expected from sequence similarity:** Human, Mouse, Rat, Dog

250kDa  
150kDa  
100kDa  
75kDa  
50kDa  
37kDa  
  
25kDa  
20kDa  
  
15kDa  
10kDa

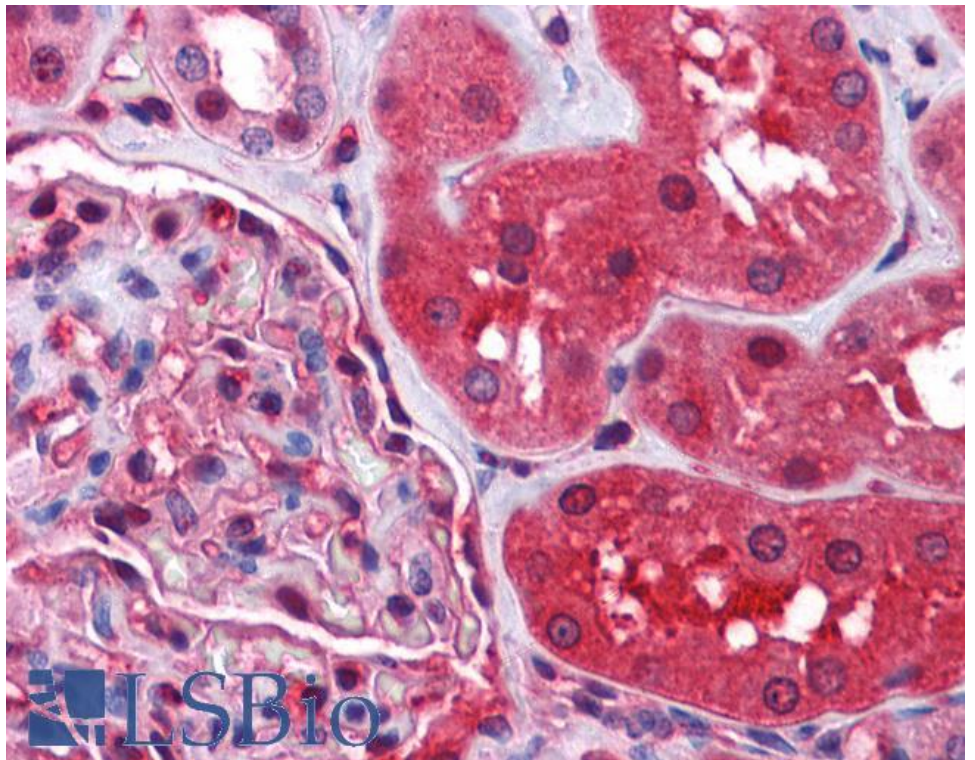
EB07306 (0.03 $\mu$ g/ml) staining of Human Tonsil lysate (35 $\mu$ g protein in RIPA buffer). Detected by chemiluminescence.



EB07306 (0.01 $\mu$ g/ml) staining of NIH3T3 (A), HeLa (B), Jurkat (C), and A431 (D) lysates (35 $\mu$ g protein in RIPA buffer). Detected by chemiluminescence.



EB07306 (2.5µg/ml) staining of paraffin embedded Human Placenta. Steamed antigen retrieval with citrate buffer pH 6, AP-staining.



EB07306 (2.5µg/ml) staining of paraffin embedded Human Kidney. Steamed antigen retrieval with citrate buffer pH 6, AP-staining.