



SZABO SCANDIC

Part of Europa Biosite

Produktinformation



Forschungsprodukte & Biochemikalien



Zellkultur & Verbrauchsmaterial



Diagnostik & molekulare Diagnostik



Laborgeräte & Service

Weitere Information auf den folgenden Seiten!
See the following pages for more information!



Lieferung & Zahlungsart

siehe unsere [Liefer- und Versandbedingungen](#)

Zuschläge

- Mindermengenzuschlag
- Trockeneiszuschlag
- Gefahrgutzuschlag
- Expressversand

SZABO-SCANDIC HandelsgmbH

Quellenstraße 110, A-1100 Wien

T. +43(0)1 489 3961-0

F. +43(0)1 489 3961-7

mail@szabo-scandic.com

www.szabo-scandic.com

[linkedin.com/company/szaboscandic](https://www.linkedin.com/company/szaboscandic) 



UK Office

Everest Biotech Ltd

Cherwell Innovation Centre
77 Heyford Park
Upper Heyford
Oxfordshire
OX25 5HD
UK

Enquiries:

info@everestbiotech.com

Sales:

sales@everestbiotech.com

Tech support:

support@everestbiotech.com

Tel: +44 (0)1869 238326

Fax: +44 (0)1869 238327

US Office

Everest Biotech c/o Abcore

405 Maple Street, Suite A106
Ramona,
CA 92065
USA

Inquiries:

info@everestbiotech.com

Sales:

usasales@everestbiotech.com

Tech support:

support@everestbiotech.com

Tel: 888-320-4628 (toll-free)

Fax: 888-841-9041

www.everestbiotech.com

**Research Use Only. Not for
diagnostic or therapeutic use.**

EB07336 - Goat Anti-Munc13-4 / UNC13D (Internal) Antibody

Size: 100µg specific antibody in 200µl



Target Protein

Principal Names: UNC13D, Munc13-4, unc-13 homolog D (C. elegans), FHL3, HLH3, HPLH3, unc-13 homolog D

Official Symbol: UNC13D

Accession Number(s): NP_954712.1

Human GeneID(s): [201294](#)

Non-Human GeneID(s): 70450 (mouse), 192177 (rat)

Immunogen

Peptide with sequence C-ETQKHKKDLHPLFD, from the internal region of the protein sequence according to NP_954712.1.

Please note the [peptide](#) is available for sale.

Purification and Storage

Purified from goat serum by ammonium sulphate precipitation followed by antigen affinity chromatography using the immunizing peptide.

Supplied at 0.5 mg/ml in Tris saline, 0.02% sodium azide, pH7.3 with 0.5% bovine serum albumin.

Aliquot and store at -20°C. Minimize freezing and thawing.

Applications Tested

Peptide ELISA: antibody detection limit dilution 1:128000.

Western blot: Approx. 105kDa band observed in Human T-lymphocyte and HeLa lysates (calculated MW of 123kDa according to NP_954712.1). Recommended concentration: 1-3µg/ml. Primary incubation was 1 hour.

IHC: In paraffin embedded Human Thymus shows cytoplasm staining in select areas. Recommended concentration: 2.5µg/ml. In paraffin embedded Mouse Lung shows staining of the respiratory epithelium in wildtype but not in the knock-out. Data kindly provided by Micheal Tuvim, University of Texas MD Anderson Cancer Center, Houston, USA. Recommended concentration: 1-2µg/ml.

Species Reactivity

Tested: Human, Mouse

Expected from sequence similarity: Human, Mouse, Rat, Dog, Pig, Cow

Specific Reference

This antibody has been successfully used in Western blot on Human:

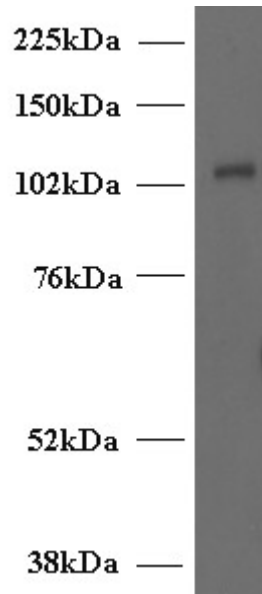
Dettmer V, Bloom K, Gross M, Weissert K, Aichele P, Ehl S, Cathomen T

Retroviral UNC13D Gene Transfer Restores Cytotoxic Activity of T

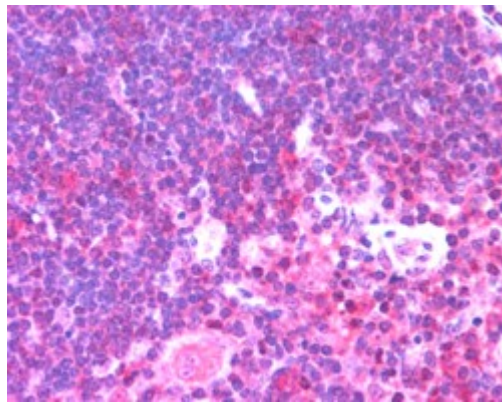
Cells Derived from Familial Hemophagocytic Lymphohistiocytosis Type 3 Patients In Vitro.

Hum Gene Ther. 2019 Aug;30(8):975-984.

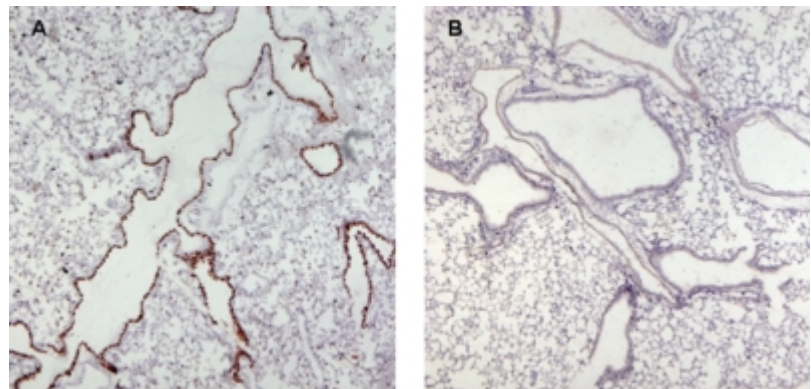
PMID: 31032638



EB07336 (2 μ g/ml) staining of Human T-lymphocyte lysate (35 μ g protein in RIPA buffer). Detected by chemiluminescence.



EB07336 (2.5 μ g/ml) staining of paraffin embedded Human Thymus. Steamed antigen retrieval with citrate buffer pH 6, AP-staining.



EB07336 (0.5 μ g/ml) staining of paraffin embedded Mouse Lung (wt in A and KO in B) .