



# SZABO SCANDIC

Part of Europa Biosite

## Produktinformation



Forschungsprodukte & Biochemikalien



Zellkultur & Verbrauchsmaterial



Diagnostik & molekulare Diagnostik



Laborgeräte & Service

Weitere Information auf den folgenden Seiten!  
See the following pages for more information!



### Lieferung & Zahlungsart

siehe unsere [Liefer- und Versandbedingungen](#)

### Zuschläge

- Mindermengenzuschlag
- Trockeneiszuschlag
- Gefahrgutzuschlag
- Expressversand

### SZABO-SCANDIC HandelsgmbH

Quellenstraße 110, A-1100 Wien

T. +43(0)1 489 3961-0

F. +43(0)1 489 3961-7

[mail@szabo-scandic.com](mailto:mail@szabo-scandic.com)

[www.szabo-scandic.com](http://www.szabo-scandic.com)

[linkedin.com/company/szaboscandic](https://www.linkedin.com/company/szaboscandic) 

## UK Office

### Everest Biotech Ltd

Cherwell Innovation Centre  
77 Heyford Park  
Upper Heyford  
Oxfordshire  
OX25 5HD  
UK

Enquiries:

[info@everestbiotech.com](mailto:info@everestbiotech.com)

Sales:

[sales@everestbiotech.com](mailto:sales@everestbiotech.com)

Tech support:

[support@everestbiotech.com](mailto:support@everestbiotech.com)

Tel: +44 (0)1869 238326

Fax: +44 (0)1869 238327

## US Office

### Everest Biotech c/o Abcore

405 Maple Street, Suite A106  
Ramona,  
CA 92065  
USA

Inquiries:

[info@everestbiotech.com](mailto:info@everestbiotech.com)

Sales:

[usasales@everestbiotech.com](mailto:usasales@everestbiotech.com)

Tech support:

[support@everestbiotech.com](mailto:support@everestbiotech.com)

Tel: 888-320-4628 (toll-free)

Fax: 888-841-9041

[www.everestbiotech.com](http://www.everestbiotech.com)

**Research Use Only. Not for  
diagnostic or therapeutic use.**

## EB07379 - Goat Anti-STAT3 Antibody

Size: 100µg specific antibody in 200µl



### Target Protein

**Principal Names:** STAT3, signal transducer and activator of transcription 3 (acute-phase response factor), APRF, FLJ20882, MGC16063, DNA-binding protein APRF, acute-phase response factor, signal transducer and activator of transcription 3

**Official Symbol:** STAT3

**Accession Number(s):** NP\_644805.1; NP\_003141.2; NP\_998827.1

**Human GeneID(s):** [6774](#)

**Non-Human GeneID(s):** 20848 (mouse), 25125 (rat)

**Important Comments:** This antibody is expected to recognise all three reported isoforms (NP\_644805.1, NP\_003141.2 and NP\_998827.1).

### Immunogen

Peptide with sequence CRPESQEHPEADP, from the internal region of the protein sequence according to NP\_644805.1; NP\_003141.2; NP\_998827.1.

Please note the [peptide](#) is available for sale.

### Purification and Storage

Purified from goat serum by ammonium sulphate precipitation followed by antigen affinity chromatography using the immunizing peptide.

Supplied at 0.5 mg/ml in Tris saline, 0.02% sodium azide, pH7.3 with 0.5% bovine serum albumin.

Aliquot and store at -20°C. Minimize freezing and thawing.

### Applications Tested

**Peptide ELISA:** antibody detection limit dilution 1:16000.

**Western blot:** Approx 85kDa band observed in lysates of cell line LNCaP, and approx. 90kDa in Mouse Heart lysates (calculated MW of 83.1kDa according to Human NP\_998827.1 and 88.1kDa according to Mouse : NP\_998824.1). Recommended concentration: 0.5-3ug/ml. Primary incubation 1 hour. at room temperature.

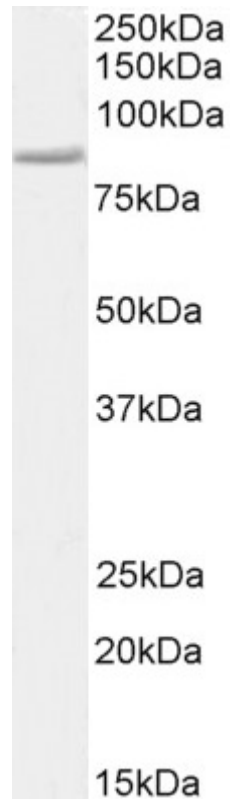
**IHC:** Paraffin embedded Human Kidney. Recommended concentration: 5µg/ml.

**Flow Cytometry:** Flow cytometric analysis of K562 cells. Recommended concentration: 10ug/ml

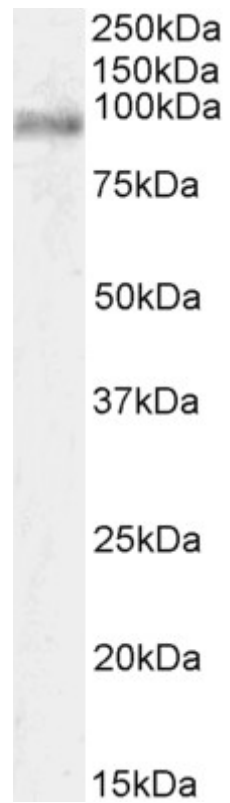
### Species Reactivity

**Tested:** Human, Mouse

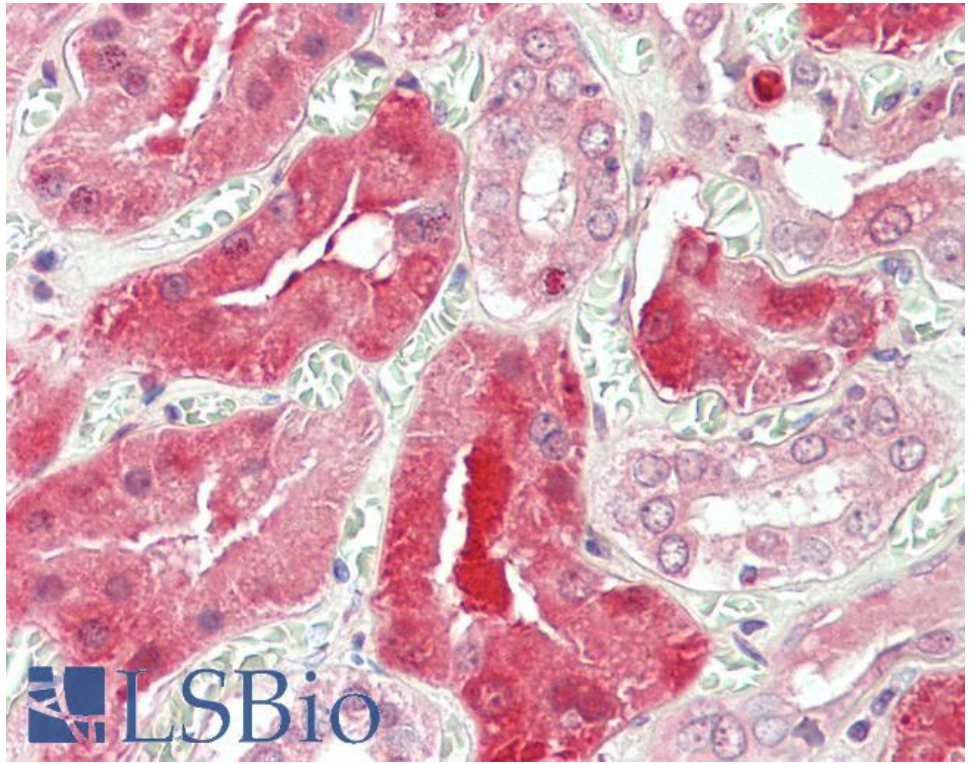
**Expected from sequence similarity:** Human, Mouse, Rat, Dog



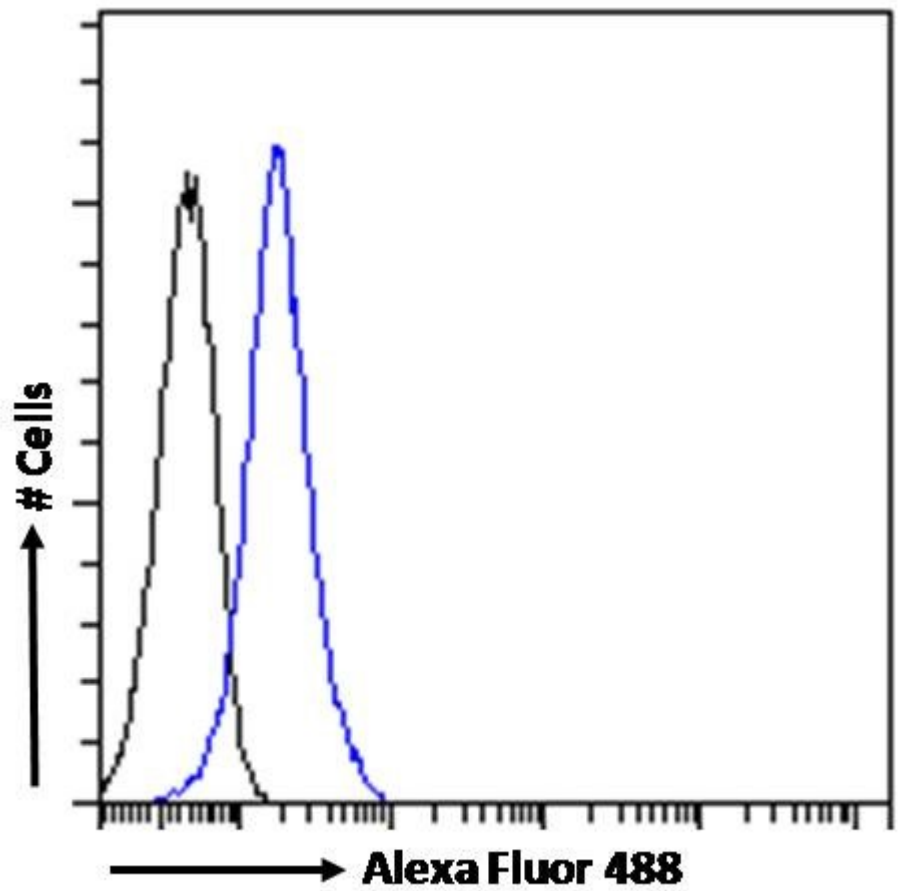
EB07379 (3 $\mu$ g/ml) staining of LNCaP cell lysate (35 $\mu$ g protein in RIPA buffer). Detected by chemiluminescence.



EB07379 (0.5 $\mu$ g/ml) staining of Mouse Heart lysate (35 $\mu$ g protein in RIPA buffer). Detected by chemiluminescence.



EB07379 (5µg/ml) staining of paraffin embedded Human Kidney. Steamed antigen retrieval with citrate buffer pH 6, AP-staining.



EB07379 Flow cytometric analysis of paraformaldehyde fixed K562 cells (blue line), permeabilized with 0.5% Triton. Primary incubation 1hr (10µg/ml) followed by Alexa Fluor 488 secondary antibody (1µg/ml). IgG control: Unimmunized goat IgG (black line) followed by Alexa Fluor 488 secondary antibody.