



SZABO SCANDIC

Part of Europa Biosite

Produktinformation



Forschungsprodukte & Biochemikalien



Zellkultur & Verbrauchsmaterial



Diagnostik & molekulare Diagnostik



Laborgeräte & Service

Weitere Information auf den folgenden Seiten!
See the following pages for more information!



Lieferung & Zahlungsart

siehe unsere [Liefer- und Versandbedingungen](#)

Zuschläge

- Mindermengenzuschlag
- Trockeneiszuschlag
- Gefahrgutzuschlag
- Expressversand

SZABO-SCANDIC HandelsgmbH

Quellenstraße 110, A-1100 Wien

T. +43(0)1 489 3961-0

F. +43(0)1 489 3961-7

mail@szabo-scandic.com

www.szabo-scandic.com

[linkedin.com/company/szaboscandic](https://www.linkedin.com/company/szaboscandic) 



UK Office

Everest Biotech Ltd

Cherwell Innovation Centre
77 Heyford Park
Upper Heyford
Oxfordshire
OX25 5HD
UK

Enquiries:

info@everestbiotech.com

Sales:

sales@everestbiotech.com

Tech support:

support@everestbiotech.com

Tel: +44 (0)1869 238326

Fax: +44 (0)1869 238327

US Office

Everest Biotech c/o Abcore

405 Maple Street, Suite A106
Ramona,
CA 92065
USA

Inquiries:

info@everestbiotech.com

Sales:

usasales@everestbiotech.com

Tech support:

support@everestbiotech.com

Tel: 888-320-4628 (toll-free)

Fax: 888-841-9041

www.everestbiotech.com

**Research Use Only. Not for
diagnostic or therapeutic use.**

EB07405 - Goat Anti-Snail homolog 1 / SNAI1 Antibody

Size: 100µg specific antibody in 200µl



Target Protein

Principal Names: SNAI1, snail homolog 1 (Drosophila), SLUGH2, SNA, SNAH, dJ710H13.1, snail 1 (drosophila homolog), zinc finger protein, snail 1 homolog, snail 1 zinc finger protein

Official Symbol: SNAI1

Accession Number(s): NP_005976.2

Non-Human GeneID(s): 20613 (mouse), 116490 (rat)

Immunogen

Peptide with sequence RKPSDPNRKPNY-C, from the N Terminus of the protein sequence according to NP_005976.2.

Please note the [peptide](#) is available for sale.

Purification and Storage

Purified from goat serum by ammonium sulphate precipitation followed by antigen affinity chromatography using the immunizing peptide.

Supplied at 0.5 mg/ml in Tris saline, 0.02% sodium azide, pH7.3 with 0.5% bovine serum albumin.

Aliquot and store at -20°C. Minimize freezing and thawing.

Applications Tested

Peptide ELISA: antibody detection limit dilution 1:64000.

Western blot: Approx 28kDa band observed in Mouse and Rat Kidney lysates (calculated MW of 29.1kDa according to Mouse NP_035557.1 and Rat NP_446257.1).

Recommended concentration: 0.1-1µg/ml. Primary incubation 1 hour at room temperature.

Species Reactivity

Tested: Mouse, Rat

Expected from sequence similarity: Human, Mouse, Rat

Specific Reference

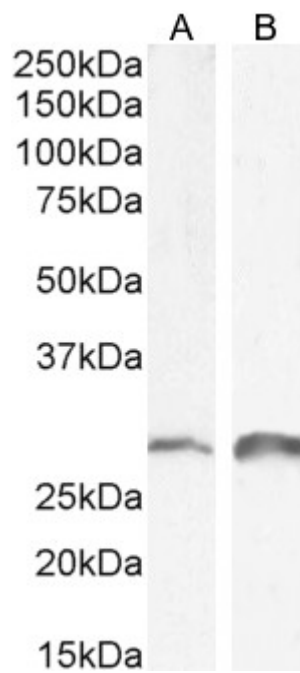
This antibody has been successfully used in IHC and Western blot on Rat:

Cui F, Zou D, Gao Y, Zhang N, Wang J, Xu L, Geng J, Li J, Zhou S, Wang X.

Effect of Tongxinluo on Nephryn Expression via Inhibition of Notch1/Snail Pathway in Diabetic Rats.

Evid Based Complement Alternat Med. 2015;2015:424193

PMID: 26417374



EB07405 (0.1 µg/ml) staining of Mouse (A) and Rat (B) Kidney lysate (35 µg protein in RIPA buffer). Detected by chemiluminescence.