



SZABO SCANDIC

Part of Europa Biosite

Produktinformation



Forschungsprodukte & Biochemikalien



Zellkultur & Verbrauchsmaterial



Diagnostik & molekulare Diagnostik



Laborgeräte & Service

Weitere Information auf den folgenden Seiten!
See the following pages for more information!



Lieferung & Zahlungsart

siehe unsere [Liefer- und Versandbedingungen](#)

Zuschläge

- Mindermengenzuschlag
- Trockeneiszuschlag
- Gefahrgutzuschlag
- Expressversand

SZABO-SCANDIC HandelsgmbH

Quellenstraße 110, A-1100 Wien

T. +43(0)1 489 3961-0

F. +43(0)1 489 3961-7

mail@szabo-scandic.com

www.szabo-scandic.com

[linkedin.com/company/szaboscandic](https://www.linkedin.com/company/szaboscandic) 



UK Office

Everest Biotech Ltd

Cherwell Innovation Centre
77 Heyford Park
Upper Heyford
Oxfordshire
OX25 5HD
UK

Enquiries:

info@everestbiotech.com

Sales:

sales@everestbiotech.com

Tech support:

support@everestbiotech.com

Tel: +44 (0)1869 238326

Fax: +44 (0)1869 238327

US Office

Everest Biotech c/o Abcore

405 Maple Street, Suite A106
Ramona,
CA 92065
USA

Inquiries:

info@everestbiotech.com

Sales:

usasales@everestbiotech.com

Tech support:

support@everestbiotech.com

Tel: 888-320-4628 (toll-free)

Fax: 888-841-9041

www.everestbiotech.com

**Research Use Only. Not for
diagnostic or therapeutic use.**

EB07493 - Goat Anti-S100A4 / CAPL Antibody

Size: 100µg specific antibody in 200µl



Target Protein

Principal Names: S100A4, CAPL, S100 calcium binding protein A4, 18A2, 42A, MTS1, P9KA, PEL98, S100 calcium binding protein A4 (calcium protein, calvasculin, metastasin, murine placental homolog), S100 calcium-binding protein A4, S100 calcium-binding protein A4 (calcium protein, calvasculin, metastasin, murine placental homolog), malignant transformation suppression 1

Official Symbol: S100A4

Accession Number(s): NP_002952.1; NP_062427.1

Human GeneID(s): [6275](#)

Non-Human GeneID(s): 20198 (mouse), 24615 (rat)

Important Comments: Both variants (NP_002952.1; NP_062427.1) represent identical protein.

Immunogen

Peptide with sequence CNEFFEGFPDKQP, from the C Terminus of the protein sequence according to NP_002952.1; NP_062427.1.

Please note the [peptide](#) is available for sale.

Purification and Storage

Purified from goat serum by ammonium sulphate precipitation followed by antigen affinity chromatography using the immunizing peptide.

Supplied at 0.5 mg/ml in Tris saline, 0.02% sodium azide, pH7.3 with 0.5% bovine serum albumin.

Aliquot and store at -20°C. Minimize freezing and thawing.

Applications Tested

Peptide ELISA: antibody detection limit dilution 1:128000.

Western blot: Approx 13kDa band observed in Human Peripheral blood mononuclear cells lysates (calculated MW of 11.7kDa according to NP_002952.1). Recommended concentration: 0.05-0.2µg/ml. Primary incubation was 1 hour.

IHC: In paraffin embedded Human Small Intestine shows staining of lymphatic cells in the lamina propria. Recommended concentration: 1-2µg/ml.

Species Reactivity

Tested: Human

Expected from sequence similarity: Human, Mouse, Rat, Dog

Specific Reference

This antibody (previous batch) has been successfully used in Western blot on Human:

Rasanen K, Sriswasdi S, Valiga A, Tang HY, Zhang G, Perego M, Somasundaram R, Li L, Speicher K, Klein-Szanto AJ, Basu D, Rustgi AK, Speicher DW, Herlyn M.

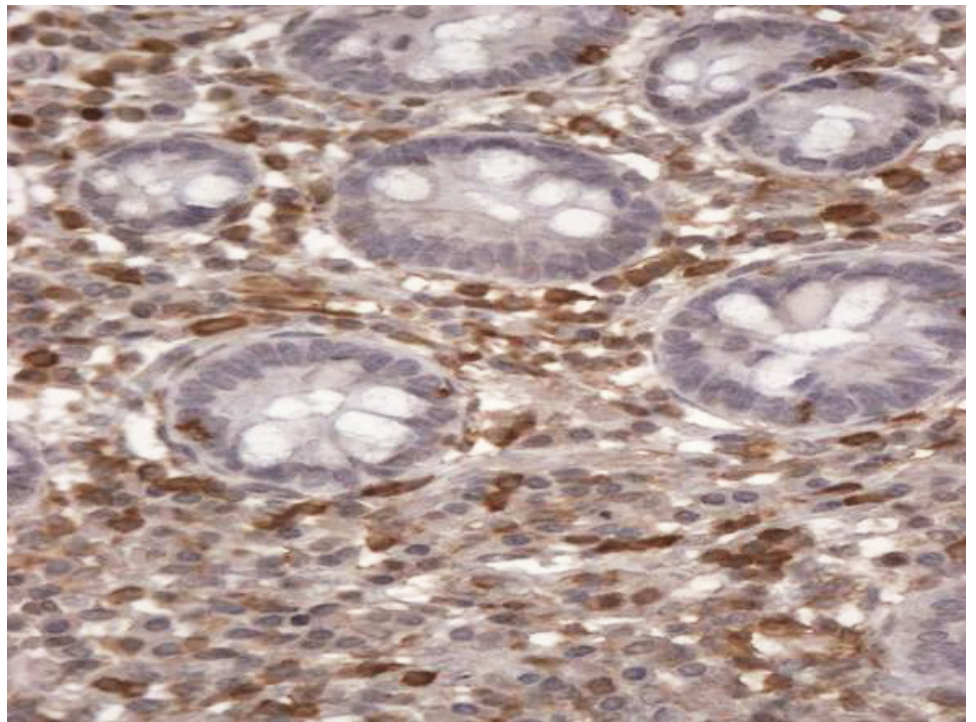
Comparative secretome analysis of epithelial and mesenchymal subpopulations of head and neck squamous cell carcinoma identifies S100A4 as a potential therapeutic target.

Mol Cell Proteomics. 2013 Dec;12(12):3778-92.

PMID: 24037664



EB07493 (0.05 μ g/ml) staining of Peripheral blood mononuclear cells lysate (35 μ g protein in RIPA buffer).
Detected by chemiluminescence.



EB07493 (2 μ g/ml) staining of paraffin embedded Human Small Intestine. Steamed antigen retrieval with citrate buffer pH 6, HRP-staining.