



SZABO SCANDIC

Part of Europa Biosite

Produktinformation



Forschungsprodukte & Biochemikalien



Zellkultur & Verbrauchsmaterial



Diagnostik & molekulare Diagnostik



Laborgeräte & Service

Weitere Information auf den folgenden Seiten!
See the following pages for more information!



Lieferung & Zahlungsart

siehe unsere [Liefer- und Versandbedingungen](#)

Zuschläge

- Mindermengenzuschlag
- Trockeneiszuschlag
- Gefahrgutzuschlag
- Expressversand

SZABO-SCANDIC HandelsgmbH

Quellenstraße 110, A-1100 Wien

T. +43(0)1 489 3961-0

F. +43(0)1 489 3961-7

mail@szabo-scandic.com

www.szabo-scandic.com

[linkedin.com/company/szaboscandic](https://www.linkedin.com/company/szaboscandic) 



UK Office

Everest Biotech Ltd

Cherwell Innovation Centre
77 Heyford Park
Upper Heyford
Oxfordshire
OX25 5HD
UK

Enquiries:

info@everestbiotech.com

Sales:

sales@everestbiotech.com

Tech support:

support@everestbiotech.com

Tel: +44 (0)1869 238326

Fax: +44 (0)1869 238327

US Office

Everest Biotech c/o Abcore

405 Maple Street, Suite A106
Ramona,
CA 92065
USA

Inquiries:

info@everestbiotech.com

Sales:

usasales@everestbiotech.com

Tech support:

support@everestbiotech.com

Tel: 888-320-4628 (toll-free)

Fax: 888-841-9041

www.everestbiotech.com

**Research Use Only. Not for
diagnostic or therapeutic use.**

EB07503 - Goat Anti-Gelsolin / GSN Antibody

Size: 100µg specific antibody in 200µl



Target Protein

Principal Names: GSN, gelsolin, gelsolin (amyloidosis, Finnish type), DKFZp313L0718

Official Symbol: GSN

Accession Number(s): NP_000168.1; NP_937895.1; NP_001121138.1;
NP_001244958.1; NP_001244959.1; NP_001121135.2; NP_001340005.1;
NP_001340007.1

Human GeneID(s): [2934](#)

Non-Human GeneID(s): 227753 (mouse), 296654 (rat)

Important Comments: This antibody is expected to recognize isoforms a, b, c, d, e, f, g, h

Immunogen

Peptide with sequence C-PRLKDKKMDAHP, from the internal region of the protein sequence according to NP_000168.1; NP_937895.1; NP_001121138.1; NP_001244958.1; NP_001244959.1; NP_001121135.2; NP_001340005.1; NP_001340007.1.

Please note the [peptide](#) is available for sale.

Purification and Storage

Purified from goat serum by ammonium sulphate precipitation followed by antigen affinity chromatography using the immunizing peptide.

Supplied at 0.5 mg/ml in Tris saline, 0.02% sodium azide, pH7.3 with 0.5% bovine serum albumin.

Aliquot and store at -20°C. Minimize freezing and thawing.

Applications Tested

Peptide ELISA: antibody detection limit dilution 1:128000.

Western blot: Approx 90kDa observed in Human Colorectal cancer lysates and in preliminary testing of Human Spleen and Parathyroid lysate (calculated MW of 85.7kDa according to NP_000168.1). Recommended concentration: 0.1-2µg/ml. Primary incubation 1 hour at room temperature.

Flow Cytometry: Flow cytometric analysis of HeLa cells. Recommended concentration: 10ug/ml.

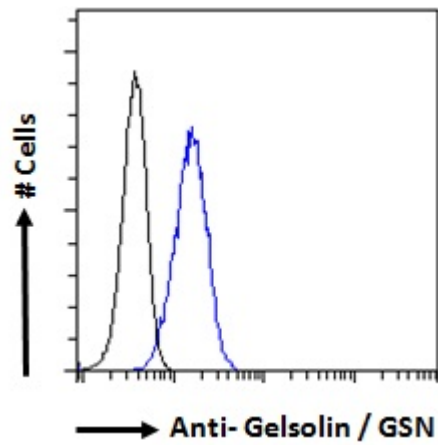
Species Reactivity

Tested: Human

Expected from sequence similarity: Human, Mouse, Rat, Dog, Cow



EB07503 (1µg/ml) staining of Human Colorectal cancer lysate (35µg protein in RIPA buffer). Detected by chemiluminescence.



EB07503 Flow cytometric analysis of paraformaldehyde fixed HeLa cells (blue line), permeabilized with 0.5% Triton. Primary incubation 1hr (10ug/ml) followed by Alexa Fluor 488 secondary antibody (1ug/ml). IgG control: Unimmunized goat IgG (black line) followed by Alexa Fluor 488 secondary antibody.