



SZABO SCANDIC

Part of Europa Biosite

Produktinformation



Forschungsprodukte & Biochemikalien



Zellkultur & Verbrauchsmaterial



Diagnostik & molekulare Diagnostik



Laborgeräte & Service

Weitere Information auf den folgenden Seiten!
See the following pages for more information!



Lieferung & Zahlungsart

siehe unsere [Liefer- und Versandbedingungen](#)

Zuschläge

- Mindermengenzuschlag
- Trockeneiszuschlag
- Gefahrgutzuschlag
- Expressversand

SZABO-SCANDIC HandelsgmbH

Quellenstraße 110, A-1100 Wien

T. +43(0)1 489 3961-0

F. +43(0)1 489 3961-7

mail@szabo-scandic.com

www.szabo-scandic.com

[linkedin.com/company/szaboscandic](https://www.linkedin.com/company/szaboscandic) 



UK Office

Everest Biotech Ltd

Cherwell Innovation Centre
77 Heyford Park
Upper Heyford
Oxfordshire
OX25 5HD
UK

Enquiries:

info@everestbiotech.com

Sales:

sales@everestbiotech.com

Tech support:

support@everestbiotech.com

Tel: +44 (0)1869 238326

Fax: +44 (0)1869 238327

US Office

Everest Biotech c/o Abcore

405 Maple Street, Suite A106
Ramona,
CA 92065
USA

Inquiries:

info@everestbiotech.com

Sales:

usasales@everestbiotech.com

Tech support:

support@everestbiotech.com

Tel: 888-320-4628 (toll-free)

Fax: 888-841-9041

www.everestbiotech.com

**Research Use Only. Not for
diagnostic or therapeutic use.**

EB07520 - Goat Anti-FOXP2 (internal) Antibody

Size: 100µg specific antibody in 200µl



Target Protein

Principal Names: FOXP2, forkhead box P2, CAGH44, DKFZp686H1726, SPCH1, TNRC10, CAG repeat protein 44, forkhead/winged-helix transcription factor, speech and language disorder 1, trinucleotide repeat containing 10

Official Symbol: FOXP2

Accession Number(s): NP_055306.1; NP_683696.2; NP_683697.2; NP_683698.2; NP_001166237.1

Human GeneID(s): [93986](#)

Non-Human GeneID(s): 114142 (mouse)

Important Comments: This antibody is expected to recognize isoform I (NP_055306.1), isoform II (NP_683696.2), isoform IV (NP_683698.2) and isoform V (NP_001166237.1).

Immunogen

Peptide with sequence C-DEVEYQKRRSQKIT, from the internal region of the protein sequence according to NP_055306.1; NP_683696.2; NP_683697.2; NP_683698.2; NP_001166237.1.

Please note the [peptide](#) is available for sale.

Purification and Storage

Purified from goat serum by ammonium sulphate precipitation followed by antigen affinity chromatography using the immunizing peptide.

Supplied at 0.5 mg/ml in Tris saline, 0.02% sodium azide, pH7.3 with 0.5% bovine serum albumin.

Aliquot and store at -20°C. Minimize freezing and thawing.

Applications Tested

Peptide ELISA: antibody detection limit dilution 1:64000.

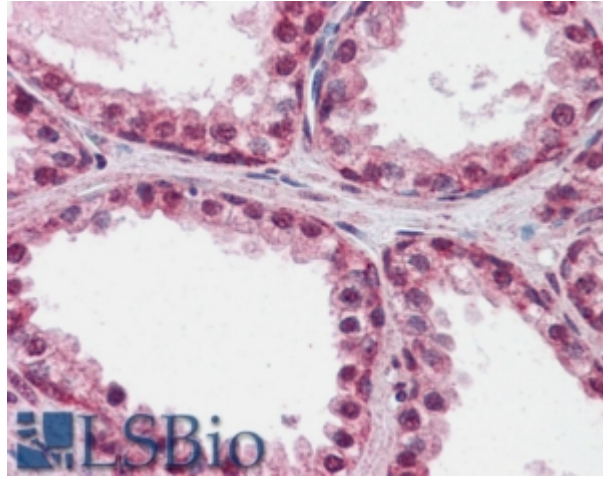
Western blot: Preliminary testing showed an approx 90kDa band in Human Cerebellum lysate and an approx 75kDa band in Rat Brain lysate after 0.3ug/ml staining. An additional band of unknown identity was also consistently observed at 28-30kDa and was successfully blocked by incubation with the immunising peptide.

IHC: Paraffin embedded Human Prostate and Placenta. Recommended concentration: 2.5µg/ml.

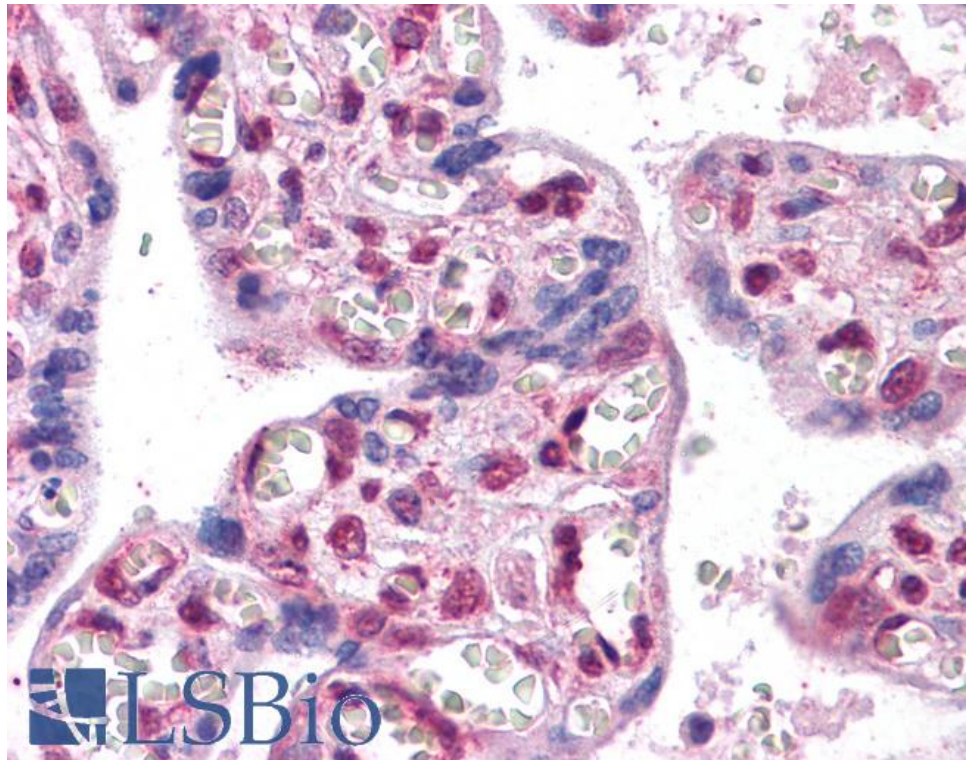
Species Reactivity

Tested: Human

Expected from sequence similarity: Human, Mouse, Rat, Cat, Dog, Pig, Cow, Zebrafish



EB07520 (2.5µg/ml) staining of paraffin embedded Human Prostate. Steamed antigen retrieval with citrate buffer pH 6, AP-staining.



EB07520 (2.5µg/ml) staining of paraffin embedded Human Placenta. Steamed antigen retrieval with citrate buffer pH 6, AP-staining.