



SZABO SCANDIC

Part of Europa Biosite

Produktinformation



Forschungsprodukte & Biochemikalien



Zellkultur & Verbrauchsmaterial



Diagnostik & molekulare Diagnostik



Laborgeräte & Service

Weitere Information auf den folgenden Seiten!
See the following pages for more information!



Lieferung & Zahlungsart

siehe unsere [Liefer- und Versandbedingungen](#)

Zuschläge

- Mindermengenzuschlag
- Trockeneiszuschlag
- Gefahrgutzuschlag
- Expressversand

SZABO-SCANDIC HandelsgmbH

Quellenstraße 110, A-1100 Wien

T. +43(0)1 489 3961-0

F. +43(0)1 489 3961-7

mail@szabo-scandic.com

www.szabo-scandic.com

[linkedin.com/company/szaboscandic](https://www.linkedin.com/company/szaboscandic) 



UK Office

Everest Biotech Ltd

Cherwell Innovation Centre
77 Heyford Park
Upper Heyford
Oxfordshire
OX25 5HD
UK

Enquiries:

info@everestbiotech.com

Sales:

sales@everestbiotech.com

Tech support:

support@everestbiotech.com

Tel: +44 (0)1869 238326

Fax: +44 (0)1869 238327

US Office

Everest Biotech c/o Abcore

405 Maple Street, Suite A106
Ramona,
CA 92065
USA

Inquiries:

info@everestbiotech.com

Sales:

usasales@everestbiotech.com

Tech support:

support@everestbiotech.com

Tel: 888-320-4628 (toll-free)

Fax: 888-841-9041

www.everestbiotech.com

**Research Use Only. Not for
diagnostic or therapeutic use.**

EB07536 - Goat Anti-GJB2 / Connexin 26 Antibody

Size: 100µg specific antibody in 200µl

Target Protein

Principal Names: GJB2, Connexin 26, gap junction protein, beta 2, 26kDa (connexin 26), CX26, DFNA3, DFNB1, HID, KID, NSRD1, PPK, gap junction protein beta 2, gap junction protein, beta 2, 26kD (connexin 26)

Official Symbol: GJB2

Accession Number(s): NP_003995.2

Human GeneID(s): [2706](#)

Non-Human GeneID(s): 14619 (mouse), 394266 (rat)

Immunogen

Peptide with sequence YLLIRYCSGKSKKP, from the C Terminus of the protein sequence according to NP_003995.2.

Please note the [peptide](#) is available for sale.

Purification and Storage

Purified from goat serum by ammonium sulphate precipitation followed by antigen affinity chromatography using the immunizing peptide.

Supplied at 0.5 mg/ml in Tris saline, 0.02% sodium azide, pH7.3 with 0.5% bovine serum albumin.

Aliquot and store at -20°C. Minimize freezing and thawing.

Applications Tested

Peptide ELISA: antibody detection limit dilution 1:128000.

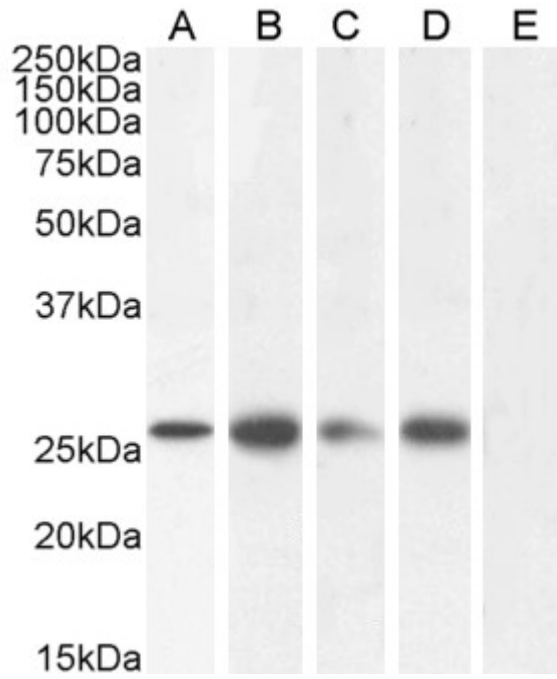
Western blot: Approx 25-26kDa band observed in Human Colon, Prostate and Skin , Mouse Brain and in Mouse and Rat Heart lysates (calculated MW of 26.2kDa according to Human NP_003995.2 and 26.4kDa according to Mouse NP_032151.1 and Rat NP_001004099.1) Recommended concentration: 0.01-1µg/ml. Primary incubation 1 hour at room temperature. **Negative Control:** Human Adipose tissue lysate.

Flow Cytometry: Flow cytometric analysis of HepG2 cells. Recommended concentration: 10ug/ml.

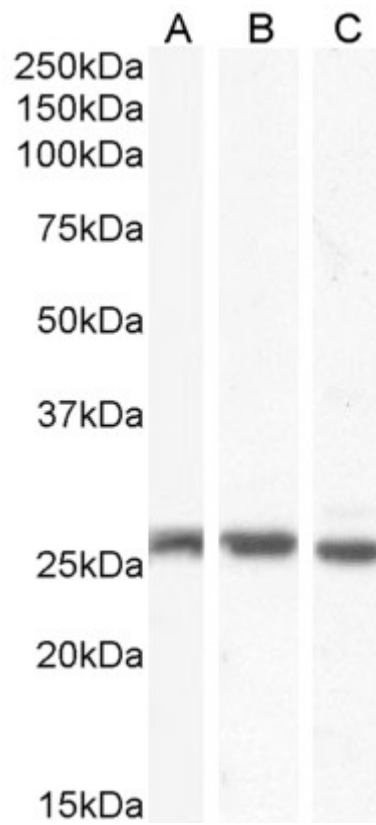
Species Reactivity

Tested: Human, Mouse, Rat

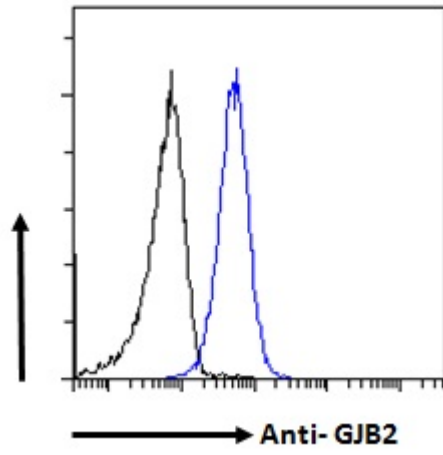
Expected from sequence similarity: Human, Mouse, Rat, Dog



EB07536 (1 μ g/ml) staining of Human Colon (A), Heart (B), Prostate (C), Skin (D) and negative control Adipose (E) lysate (35 μ g protein in RIPA buffer). Detected by chemiluminescence.



EB07536 (0.01 μ g/ml) staining of Mouse Brain (A), (0.5 μ g/ml) Mouse Heart (B) and Rat Heart (C) lysate (35 μ g protein in RIPA buffer). Detected by chemiluminescence.



EB07536 Flow cytometric analysis of paraformaldehyde fixed HepG2 cells (blue line), permeabilized with 0.5% Triton. Primary incubation 1hr (10ug/ml) followed by Alexa Fluor 488 secondary antibody (1ug/ml). IgG control: Unimmunized goat IgG (black line) followed by Alexa Fluor 488 secondary antibody.