



SZABO SCANDIC

Part of Europa Biosite

Produktinformation



Forschungsprodukte & Biochemikalien



Zellkultur & Verbrauchsmaterial



Diagnostik & molekulare Diagnostik



Laborgeräte & Service

Weitere Information auf den folgenden Seiten!
See the following pages for more information!



Lieferung & Zahlungsart

siehe unsere [Liefer- und Versandbedingungen](#)

Zuschläge

- Mindermengenzuschlag
- Trockeneiszuschlag
- Gefahrgutzuschlag
- Expressversand

SZABO-SCANDIC HandelsgmbH

Quellenstraße 110, A-1100 Wien

T. +43(0)1 489 3961-0

F. +43(0)1 489 3961-7

mail@szabo-scandic.com

www.szabo-scandic.com

[linkedin.com/company/szaboscandic](https://www.linkedin.com/company/szaboscandic) 



UK Office

Everest Biotech Ltd

Cherwell Innovation Centre
77 Heyford Park
Upper Heyford
Oxfordshire
OX25 5HD
UK

Enquiries:

info@everestbiotech.com

Sales:

sales@everestbiotech.com

Tech support:

support@everestbiotech.com

Tel: +44 (0)1869 238326

Fax: +44 (0)1869 238327

US Office

Everest Biotech c/o Abcore

405 Maple Street, Suite A106
Ramona,
CA 92065
USA

Inquiries:

info@everestbiotech.com

Sales:

usasales@everestbiotech.com

Tech support:

support@everestbiotech.com

Tel: 888-320-4628 (toll-free)

Fax: 888-841-9041

www.everestbiotech.com

**Research Use Only. Not for
diagnostic or therapeutic use.**

EB07553 - Goat Anti-CRHR1 / CRF-R (aa 250 - 263) Antibody

Size: 100µg specific antibody in 200µl



Target Protein

Principal Names: CRHR1, CRF-R, corticotropin releasing hormone receptor 1, CRF1, CRFR1, CRH-R1h, CRHR, CRHR1f, corticotropin releasing hormone receptor variant 1h, seven transmembrane helix receptor

Official Symbol: CRHR1

Accession Number(s): NP_004373.2

Human GeneID(s): [1394](#)

Non-Human GeneID(s): 12921 (mouse), 58959 (rat)

Immunogen

Peptide with sequence KLYYDNEKCWFGKR, from the internal region of the protein sequence according to NP_004373.2.

Please note the [peptide](#) is available for sale.

Purification and Storage

Purified from goat serum by ammonium sulphate precipitation followed by antigen affinity chromatography using the immunizing peptide.

Supplied at 0.5 mg/ml in Tris saline, 0.02% sodium azide, pH7.3 with 0.5% bovine serum albumin.

Aliquot and store at -20°C. Minimize freezing and thawing.

Applications Tested

Peptide ELISA: antibody detection limit dilution 1:1000.

Western blot: This antibody has been successfully used in WB on Mouse: Hunt AJ Jr et al, Brain Struct Funct. 2018 Jul;223(6):2685-2698. PMID: 29569009.

IHC: Paraffin embedded Human Brain (Cortex). Recommended concentration: 5µg/ml.

Immunofluorescence: Expression of the protein seen in the cytoplasm and vesicles of MCF7 cells. Recommended concentration: 10µg/ml.

Species Reactivity

Tested: Human, Mouse

Expected from sequence similarity: Human, Mouse, Rat, Dog, Cow, Sheep

Specific References

This antibody has been successfully used on Rat:

Ying Chen , Yan Zhao, Dan-ni Luo , Hui Zheng , Ying Li , and Si-yuan Zhou
Electroacupuncture Regulates Disorders of Gut-Brain Interaction by Decreasing
Corticotropin-Releasing Factor in a Rat Model of IBS

Gastroenterology Research and Practice Volume 2019, Article ID 1759842
PMID: 31737064

This antibody has been successfully used in Western blot on Mouse:

Hunt AJ Jr, Dasgupta R, Rajamanickam S, Jiang Z, Beierlein M, Chan CS, Justice NJ
Paraventricular hypothalamic and amygdalar CRF neurons synapse in the external globus
pallidus.

Brain Struct Funct. 2018 Jul;223(6):2685-2698.

PMID: 29569009

This antibody (previous batch) has been successfully used in IF on Mouse:

Jiang Z, Rajamanickam S, Justice NJ.

Local Corticotropin-Releasing Factor Signaling in the Hypothalamic Paraventricular Nucleus.

J Neurosci. 2018 Feb 21;38(8):1874-1890.

PMID: 29352046

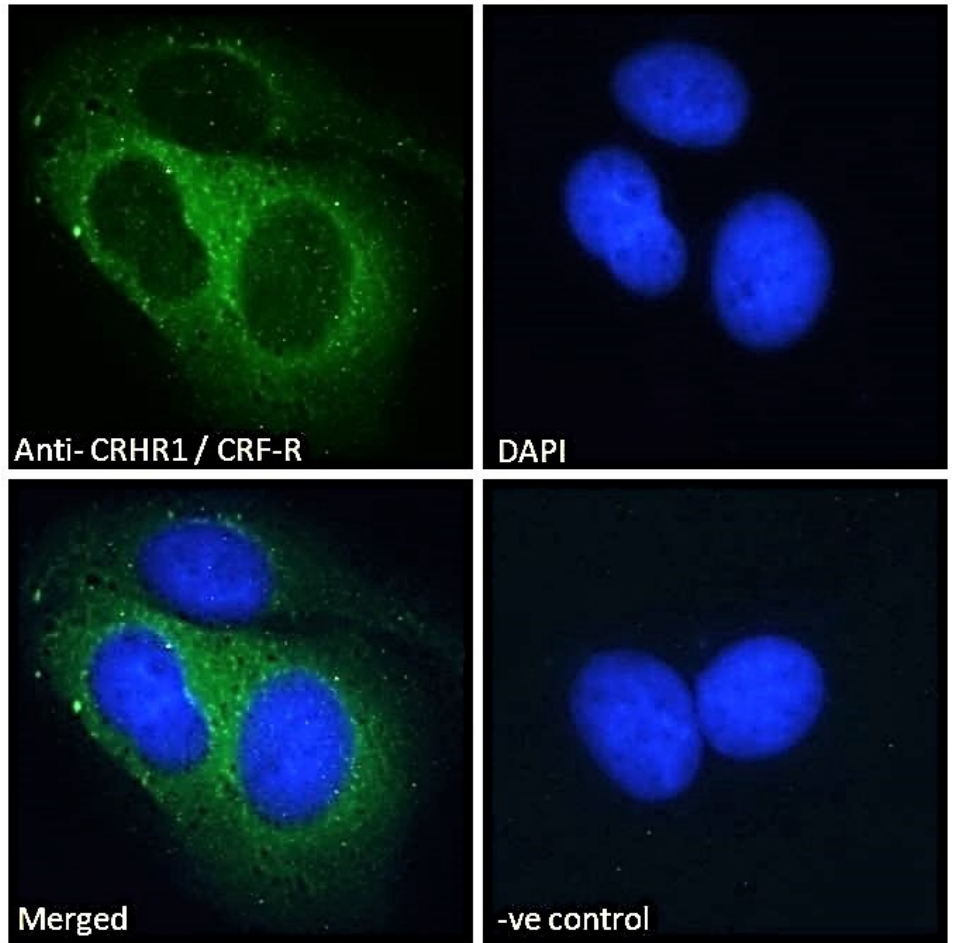
This antibody (previous batch) has been successfully used in ICC on Rat:

Adrienne L. Andres, Limor Regev, Lucas Phi, Ronald R. Seese, Yuncai Chen, Christine M. Gall and Tallie Z. Baram

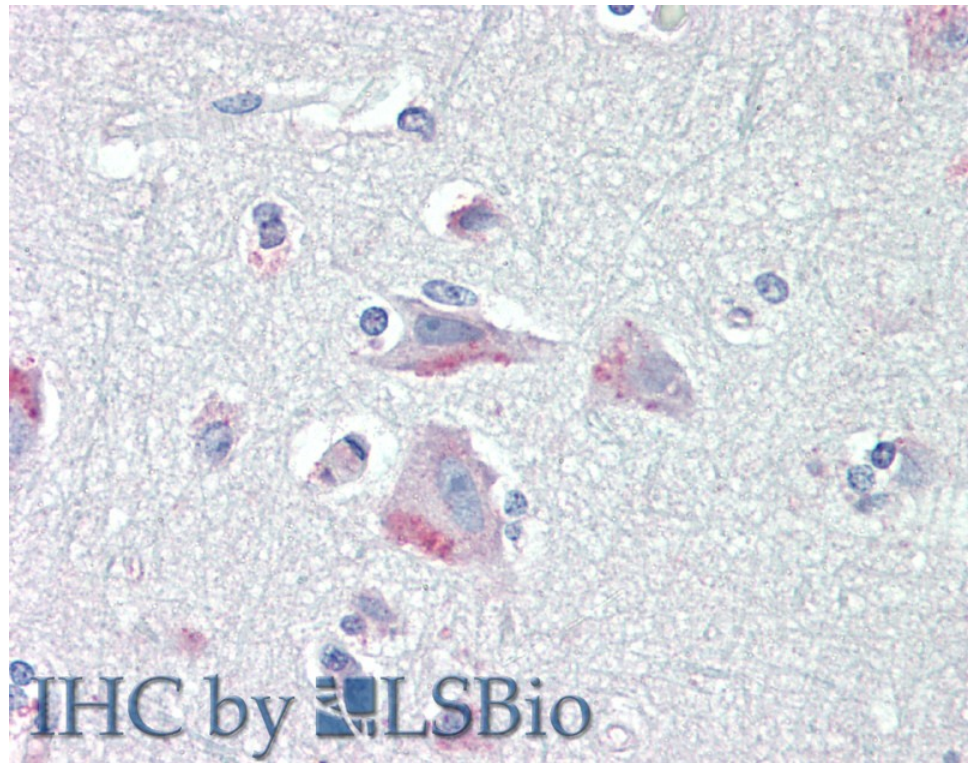
NMDA Receptor Activation and Calpain Contribute to Disruption of Dendritic Spines by the Stress Neuropeptide CRH

J Neurosci. 2013 Oct 23;33(43):16945-60.

PMID: 24155300



EB07553 Immunofluorescence analysis of paraformaldehyde fixed MCF7 cells, permeabilized with 0.15% Triton. Primary incubation 1hr (10ug/ml) followed by Alexa Fluor 488 secondary antibody (2ug/ml), showing cytoplasmic and vesicle staining. The nuclear stain is DAPI (blue). Negative control: Unimmunized goat IgG (10ug/ml) followed by Alexa Fluor 488 secondary antibody (2ug/ml).



EB07553 (5µg/ml) staining of paraffin embedded Human Cortex. Steamed antigen retrieval with citrate buffer pH 6, AP-staining.