



SZABO SCANDIC

Part of Europa Biosite

Produktinformation



Forschungsprodukte & Biochemikalien



Zellkultur & Verbrauchsmaterial



Diagnostik & molekulare Diagnostik



Laborgeräte & Service

Weitere Information auf den folgenden Seiten!
See the following pages for more information!



Lieferung & Zahlungsart

siehe unsere [Liefer- und Versandbedingungen](#)

Zuschläge

- Mindermengenzuschlag
- Trockeneiszuschlag
- Gefahrgutzuschlag
- Expressversand

SZABO-SCANDIC HandelsgmbH

Quellenstraße 110, A-1100 Wien

T. +43(0)1 489 3961-0

F. +43(0)1 489 3961-7

mail@szabo-scandic.com

www.szabo-scandic.com

[linkedin.com/company/szaboscandic](https://www.linkedin.com/company/szaboscandic) 



UK Office

Everest Biotech Ltd

Cherwell Innovation Centre
77 Heyford Park
Upper Heyford
Oxfordshire
OX25 5HD
UK

Enquiries:

info@everestbiotech.com

Sales:

sales@everestbiotech.com

Tech support:

support@everestbiotech.com

Tel: +44 (0)1869 238326

Fax: +44 (0)1869 238327

US Office

Everest Biotech c/o Abcore

405 Maple Street, Suite A106
Ramona,
CA 92065
USA

Inquiries:

info@everestbiotech.com

Sales:

usasales@everestbiotech.com

Tech support:

support@everestbiotech.com

Tel: 888-320-4628 (toll-free)

Fax: 888-841-9041

www.everestbiotech.com

**Research Use Only. Not for
diagnostic or therapeutic use.**

EB07585 - Goat Anti-AIRE Antibody

Size: 100µg specific antibody in 200µl



Target Protein

Principal Names: AIRE, autoimmune regulator (autoimmune polyendocrinopathy candidiasis ectodermal dystrophy), AIRE1, APECED, APS1, APSI, PGA1, autoimmune regulator (APECED protein), autoimmune regulator (automimmune polyendocrinopathy candidiasis ectodermal dystrophy), autoimmune regulator AIRE

Official Symbol: AIRE

Accession Number(s): NP_000374.1

Human GeneID(s): [326](#)

Non-Human GeneID(s): 11634 (mouse)

Immunogen

Peptide with sequence C-KAKPPKKPESSAEQ, from the internal region of the protein sequence according to NP_000374.1.

Please note the [peptide](#) is available for sale.

Purification and Storage

Purified from goat serum by ammonium sulphate precipitation followed by antigen affinity chromatography using the immunizing peptide.

Supplied at 0.5 mg/ml in Tris saline, 0.02% sodium azide, pH7.3 with 0.5% bovine serum albumin.

Aliquot and store at -20°C. Minimize freezing and thawing.

Applications Tested

Peptide ELISA: antibody detection limit dilution 1:64000.

Western blot: Approx 55kDa band observed in human spleen lysates (calculated MW of 57.7kDa according to NP_000374.1). Recommended concentration: 0.3-1µg/ml.

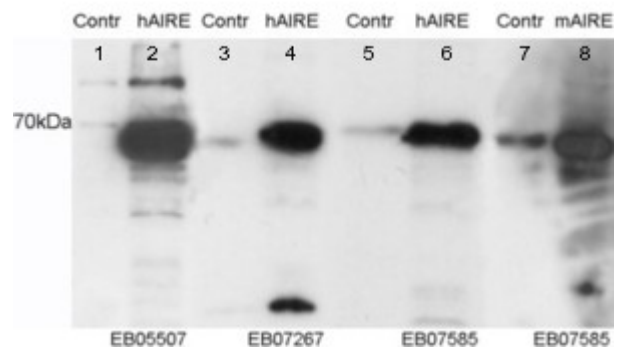
Species Reactivity

Tested: Human, Mouse

Expected from sequence similarity: Human, Rat, Pig, Cow



EB07585 (0.3µg/ml) staining of human spleen lysate (35µg protein in RIPA buffer). Primary incubation was 1 hour. Detected by chemiluminescence.



EB07585 staining (0.05µg/ml) of HEK293 cell lysates. Untransfected (Lane 5 and 7) and transfected with Human AIRE (lane 6) or Mouse AIRE (lane 7). Data kindly provided by Prof. Pärt Peterson, University of Tartu, Estonia.