



SZABO SCANDIC

Part of Europa Biosite

Produktinformation



Forschungsprodukte & Biochemikalien



Zellkultur & Verbrauchsmaterial



Diagnostik & molekulare Diagnostik



Laborgeräte & Service

Weitere Information auf den folgenden Seiten!
See the following pages for more information!



Lieferung & Zahlungsart

siehe unsere [Liefer- und Versandbedingungen](#)

Zuschläge

- Mindermengenzuschlag
- Trockeneiszuschlag
- Gefahrgutzuschlag
- Expressversand

SZABO-SCANDIC HandelsgmbH

Quellenstraße 110, A-1100 Wien

T. +43(0)1 489 3961-0

F. +43(0)1 489 3961-7

mail@szabo-scandic.com

www.szabo-scandic.com

[linkedin.com/company/szaboscandic](https://www.linkedin.com/company/szaboscandic) 



UK Office

Everest Biotech Ltd

Cherwell Innovation Centre
77 Heyford Park
Upper Heyford
Oxfordshire
OX25 5HD
UK

Enquiries:

info@everestbiotech.com

Sales:

sales@everestbiotech.com

Tech support:

support@everestbiotech.com

Tel: +44 (0)1869 238326

Fax: +44 (0)1869 238327

US Office

Everest Biotech c/o Abcore

405 Maple Street, Suite A106
Ramona,
CA 92065
USA

Inquiries:

info@everestbiotech.com

Sales:

usasales@everestbiotech.com

Tech support:

support@everestbiotech.com

Tel: 888-320-4628 (toll-free)

Fax: 888-841-9041

www.everestbiotech.com

**Research Use Only. Not for
diagnostic or therapeutic use.**

EB07590 - Goat Anti-APPL1 Antibody

Size: 100µg specific antibody in 200µl



Target Protein

Principal Names: APPL1, DIP13alpha, adaptor protein containing pH domain, PTB domain and leucine zipper motif, signaling adaptor protein DIP13alpha

Official Symbol: APPL1

Accession Number(s): NP_036228.1

Human GeneID(s): [26060](#)

Non-Human GeneID(s): 72993 (mouse)

Immunogen

Peptide with sequence C-NRYSRLSKKRENDK, from the internal region of the protein sequence according to NP_036228.1.

Please note the [peptide](#) is available for sale.

Purification and Storage

Purified from goat serum by ammonium sulphate precipitation followed by antigen affinity chromatography using the immunizing peptide.

Supplied at 0.5 mg/ml in Tris saline, 0.02% sodium azide, pH7.3 with 0.5% bovine serum albumin.

Aliquot and store at -20°C. Minimize freezing and thawing.

Applications Tested

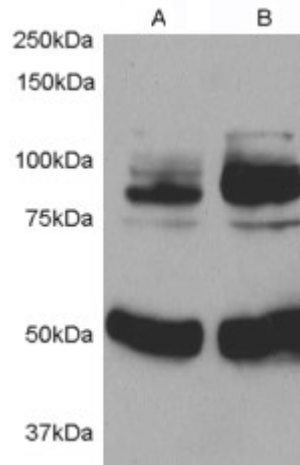
Peptide ELISA: antibody detection limit dilution 1:64000.

Western blot: Approx 80kDa band observed in Rat Aortic Smooth Skeletal Muscle Cells (lane 1), intensity increased after infection with Human APPL1 adenovirus for 48h (lane 2). Calculated MW of 79.7kDa according to NP_036228.1. The blot was co-labeled with Tubulin-specific antibodies as a loading control. Recommended concentration: 0.3-1µg/ml.

Species Reactivity

Tested:

Expected from sequence similarity: Human, Mouse, Rat, Dog, Cow



EB07590 (0.5 μ g/ml) staining of 1) Rat Aortic Smooth Muscle cell lysate 2) after infection with Human APPL1 adenovirus for 48hrs. Detected by chemiluminescence. Data kindly provided by Dr. L. Jia, Ann Arbor, USA.