



SZABO SCANDIC

Part of Europa Biosite

Produktinformation



Forschungsprodukte & Biochemikalien



Zellkultur & Verbrauchsmaterial



Diagnostik & molekulare Diagnostik



Laborgeräte & Service

Weitere Information auf den folgenden Seiten!
See the following pages for more information!



Lieferung & Zahlungsart

siehe unsere [Liefer- und Versandbedingungen](#)

Zuschläge

- Mindermengenzuschlag
- Trockeneiszuschlag
- Gefahrgutzuschlag
- Expressversand

SZABO-SCANDIC HandelsgmbH

Quellenstraße 110, A-1100 Wien

T. +43(0)1 489 3961-0

F. +43(0)1 489 3961-7

mail@szabo-scandic.com

www.szabo-scandic.com

[linkedin.com/company/szaboscandic](https://www.linkedin.com/company/szaboscandic) 



UK Office

Everest Biotech Ltd

Cherwell Innovation Centre
77 Heyford Park
Upper Heyford
Oxfordshire
OX25 5HD
UK

Enquiries:

info@everestbiotech.com

Sales:

sales@everestbiotech.com

Tech support:

support@everestbiotech.com

Tel: +44 (0)1869 238326

Fax: +44 (0)1869 238327

US Office

Everest Biotech c/o Abcore

405 Maple Street, Suite A106
Ramona,
CA 92065
USA

Inquiries:

info@everestbiotech.com

Sales:

usasales@everestbiotech.com

Tech support:

support@everestbiotech.com

Tel: 888-320-4628 (toll-free)

Fax: 888-841-9041

www.everestbiotech.com

**Research Use Only. Not for
diagnostic or therapeutic use.**

EB07611 - Goat Anti-RNF213 / C17orf27 (C Terminus) Antibody

Size: 100µg specific antibody in 200µl



Target Protein

Principal Names: RNF213, C17orf27, ring finger protein 213, chromosome 17 open reading frame 27, KIAA1554

Official Symbol: RNF213

Accession Number(s): NP_065965.4

Human GeneID(s): [57674](#)

Immunogen

Peptide with sequence C-KTAAVLKWNRE, from the C Terminus of the protein sequence according to NP_065965.4.

Please note the [peptide](#) is available for sale.

Purification and Storage

Purified from goat serum by ammonium sulphate precipitation followed by antigen affinity chromatography using the immunizing peptide.

Supplied at 0.5 mg/ml in Tris saline, 0.02% sodium azide, pH7.3 with 0.5% bovine serum albumin.

Aliquot and store at -20°C. Minimize freezing and thawing.

Applications Tested

Peptide ELISA: antibody detection limit dilution 1:4000.

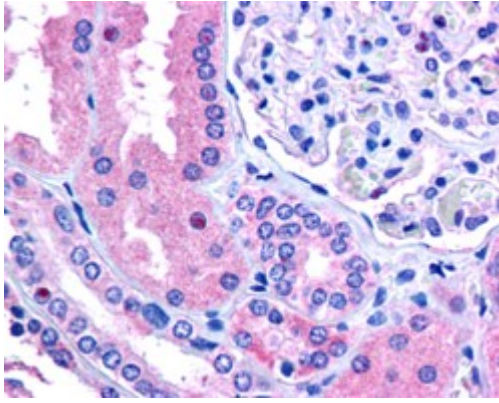
Western blot: Not yet tested - our routinely used western blotting protocol does not allow detection of proteins as large as the calculated size of 374kDa according to NP_065965.3. Therefore we cannot recommend an optimal concentration and the product is investigative grade. We would appreciate any feedback from people in the field - have any results been reported with other antibodies/lysates? Have any further splice variants/modified forms been reported?

IHC: In paraffin embedded human kidney shows rare staining of nucleoli across the kidney . Recommended concentration, 2.5µg/ml.

Species Reactivity

Tested: Human

Expected from sequence similarity: Human



EB07611 (2.5µg/ml) staining of paraffin embedded human kidney. Steamed antigen retrieval with citrate buffer pH 6, AP-staining