



# SZABO SCANDIC

Part of Europa Biosite

## Produktinformation



Forschungsprodukte & Biochemikalien



Zellkultur & Verbrauchsmaterial



Diagnostik & molekulare Diagnostik



Laborgeräte & Service

Weitere Information auf den folgenden Seiten!  
See the following pages for more information!



### Lieferung & Zahlungsart

siehe unsere [Liefer- und Versandbedingungen](#)

### Zuschläge

- Mindermengenzuschlag
- Trockeneiszuschlag
- Gefahrgutzuschlag
- Expressversand

### SZABO-SCANDIC HandelsgmbH

Quellenstraße 110, A-1100 Wien

T. +43(0)1 489 3961-0

F. +43(0)1 489 3961-7

[mail@szabo-scandic.com](mailto:mail@szabo-scandic.com)

[www.szabo-scandic.com](http://www.szabo-scandic.com)

[linkedin.com/company/szaboscandic](https://www.linkedin.com/company/szaboscandic) 



## UK Office

### Everest Biotech Ltd

Cherwell Innovation Centre  
77 Heyford Park  
Upper Heyford  
Oxfordshire  
OX25 5HD  
UK

Enquiries:

[info@everestbiotech.com](mailto:info@everestbiotech.com)

Sales:

[sales@everestbiotech.com](mailto:sales@everestbiotech.com)

Tech support:

[support@everestbiotech.com](mailto:support@everestbiotech.com)

Tel: +44 (0)1869 238326

Fax: +44 (0)1869 238327

## US Office

### Everest Biotech c/o Abcore

405 Maple Street, Suite A106  
Ramona,  
CA 92065  
USA

Inquiries:

[info@everestbiotech.com](mailto:info@everestbiotech.com)

Sales:

[usasales@everestbiotech.com](mailto:usasales@everestbiotech.com)

Tech support:

[support@everestbiotech.com](mailto:support@everestbiotech.com)

Tel: 888-320-4628 (toll-free)

Fax: 888-841-9041

[www.everestbiotech.com](http://www.everestbiotech.com)

**Research Use Only. Not for  
diagnostic or therapeutic use.**

## EB07680 - Goat Anti-Carabin / TBC1D10C Antibody

Size: 100µg specific antibody in 200µl



### Target Protein

**Principal Names:** TBC1D10C, carabin, TBC1 domain family, member 10C, FLJ00332, MGC46488

**Official Symbol:** TBC1D10C

**Accession Number(s):** NP\_940919.1

**Human GeneID(s):** [374403](#)

**Non-Human GeneID(s):** 108995 (mouse)

### Immunogen

Peptide with sequence C-PRRKPQTRGKTFH, from the internal region of the protein sequence according to NP\_940919.1.

Please note the [peptide](#) is available for sale.

### Purification and Storage

Purified from goat serum by ammonium sulphate precipitation followed by antigen affinity chromatography using the immunizing peptide.

Supplied at 0.5 mg/ml in Tris saline, 0.02% sodium azide, pH7.3 with 0.5% bovine serum albumin.

Aliquot and store at -20°C. Minimize freezing and thawing.

### Applications Tested

**Peptide ELISA:** antibody detection limit dilution 1:128000.

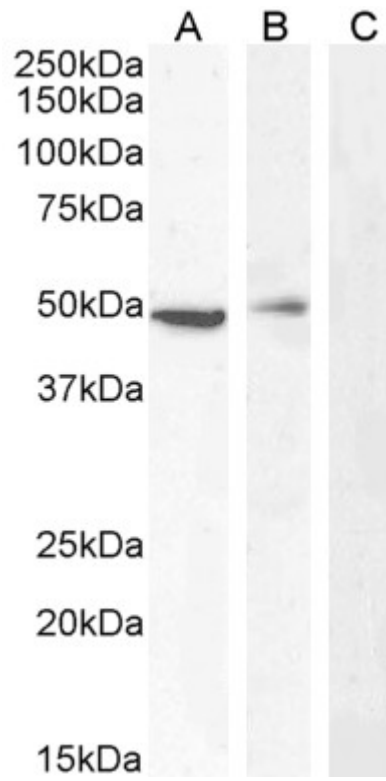
**Western blot:** Approx 48-50kDa band observed in lysates of cell line Jurkat and in Mouse Thymus lysates and approx 50kDa in Peripheral Blood Mononuclear (PBM) and in Human Spleen lysates (calculated MW of 49.7Da according to Human NP\_940919.1 and 49.9kDa according to Mouse NP\_848765.2). Recommended concentration: 0.3-2µg/ml. Primary incubation 1 hour at room temperature. **Negative Control:** A431 cell lysate.

**Flow Cytometry:** Flow cytometric analysis of Jurkat cells. Recommended concentration: 10ug/ml.

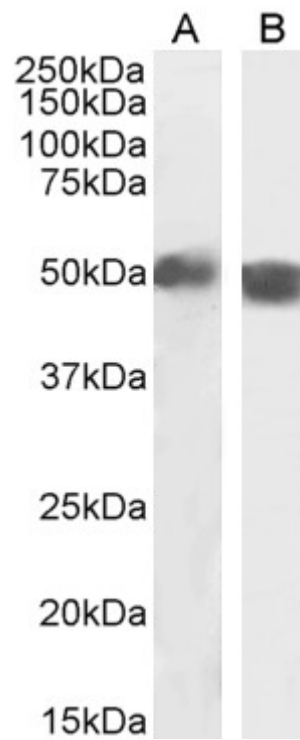
### Species Reactivity

**Tested:** Human, Mouse

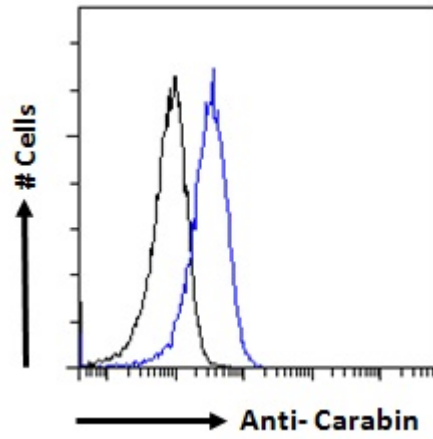
**Expected from sequence similarity:** Human, Mouse, Rat, Dog, Pig



EB07680 (0.5 $\mu$ g/ml) staining of Jurkat (A), (0.3 $\mu$ g/ml) PBM (B) and negative control A431 (C) cell lysate (35 $\mu$ g protein in RIPA buffer). Detected by chemiluminescence.



EB07680 (2 $\mu$ g/ml) staining of Human Spleen (A) and Mouse Thymus (B) lysate (35 $\mu$ g protein in RIPA buffer). Detected by chemiluminescence.



EB07680 Flow cytometric analysis of paraformaldehyde fixed Jurkat cells (blue line), permeabilized with 0.5% Triton. Primary incubation 1hr (10ug/ml) followed by Alexa Fluor 488 secondary antibody (1ug/ml). IgG control: Unimmunized goat IgG (black line) followed by Alexa Fluor 488 secondary antibody.