



# SZABO SCANDIC

Part of Europa Biosite

## Produktinformation



Forschungsprodukte & Biochemikalien



Zellkultur & Verbrauchsmaterial



Diagnostik & molekulare Diagnostik



Laborgeräte & Service

Weitere Information auf den folgenden Seiten!  
See the following pages for more information!



### Lieferung & Zahlungsart

siehe unsere [Liefer- und Versandbedingungen](#)

### Zuschläge

- Mindermengenzuschlag
- Trockeneiszuschlag
- Gefahrgutzuschlag
- Expressversand

### SZABO-SCANDIC HandelsgmbH

Quellenstraße 110, A-1100 Wien

T. +43(0)1 489 3961-0

F. +43(0)1 489 3961-7

[mail@szabo-scandic.com](mailto:mail@szabo-scandic.com)

[www.szabo-scandic.com](http://www.szabo-scandic.com)

[linkedin.com/company/szaboscandic](https://www.linkedin.com/company/szaboscandic) 



## UK Office

### Everest Biotech Ltd

Cherwell Innovation Centre  
77 Heyford Park  
Upper Heyford  
Oxfordshire  
OX25 5HD  
UK

Enquiries:

[info@everestbiotech.com](mailto:info@everestbiotech.com)

Sales:

[sales@everestbiotech.com](mailto:sales@everestbiotech.com)

Tech support:

[support@everestbiotech.com](mailto:support@everestbiotech.com)

Tel: +44 (0)1869 238326

Fax: +44 (0)1869 238327

## US Office

### Everest Biotech c/o Abcore

405 Maple Street, Suite A106  
Ramona,  
CA 92065  
USA

Inquiries:

[info@everestbiotech.com](mailto:info@everestbiotech.com)

Sales:

[usasales@everestbiotech.com](mailto:usasales@everestbiotech.com)

Tech support:

[support@everestbiotech.com](mailto:support@everestbiotech.com)

Tel: 888-320-4628 (toll-free)

Fax: 888-841-9041

[www.everestbiotech.com](http://www.everestbiotech.com)

**Research Use Only. Not for  
diagnostic or therapeutic use.**

## EB07697 - Goat Anti-Argininosuccinate synthetase 1 Antibody

Size: 100µg specific antibody in 200µl



### Target Protein

**Principal Names:** Argininosuccinate synthetase 1, ASS, ASS1, CTLN1, citrulline--aspartate ligase, argininosuccinate synthetase 1, citrulline-aspartate ligase

**Official Symbol:** ASS1

**Accession Number(s):** NP\_000041.2; NP\_446464.1

**Human GeneID(s):** [445](#)

**Non-Human GeneID(s):** 11898 (mouse), 25698 (rat)

**Important Comments:** The variants represent identical protein (NP\_000041.2 and NP\_446464.1).

### Immunogen

Peptide with sequence C-ENPKNQAPPGLYTKTQD, from the internal region of the protein sequence according to NP\_000041.2; NP\_446464.1.

Please note the [peptide](#) is available for sale.

### Purification and Storage

Purified from goat serum by ammonium sulphate precipitation followed by antigen affinity chromatography using the immunizing peptide.

Supplied at 0.5 mg/ml in Tris saline, 0.02% sodium azide, pH7.3 with 0.5% bovine serum albumin.

Aliquot and store at -20°C. Minimize freezing and thawing.

### Applications Tested

**Peptide ELISA:** antibody detection limit dilution 1:64000.

**Western blot:** Approx 45kDa band observed in lysates of cell lines A431 and NIH3T3 and approx.48kDa in Human and Rat Kidney and in Mouse Liver lysates (calculated MW of 46.5kDa according to Human NP\_000041.2 and Rat NP\_037289.1, and 46.6kDa according to Mouse NP\_031520.1 ). Recommended concentration: 0.03-1µg/ml. Primary incubation 1 hour at room temperature.

**IHC:** In paraffin embedded Human Kidney shows textured cytoplasm staining in PCT. Recommended concentration: 2-4µg/ml. Paraffin embedded Human Liver. Recommended concentration: 2.5µg/ml.

**Immunofluorescence:** Strong expression of the protein seen in the cytoplasm of HeLa cells. Recommended concentration: 10µg/ml.

**Flow Cytometry:** Flow cytometric analysis of A431 cells. Recommended concentration: 10ug/ml.

### Species Reactivity

**Tested:** Human, Mouse, Rat

**Expected from sequence similarity:** Human, Mouse, Rat, Dog, Cow

### Specific Reference

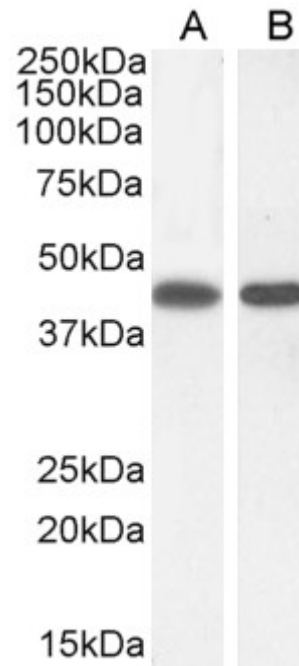
**This antibody has been successfully used in WB and IP on Cow:**

Corbin KD, Pendleton LC, Solomonson LP, Eichler DC.

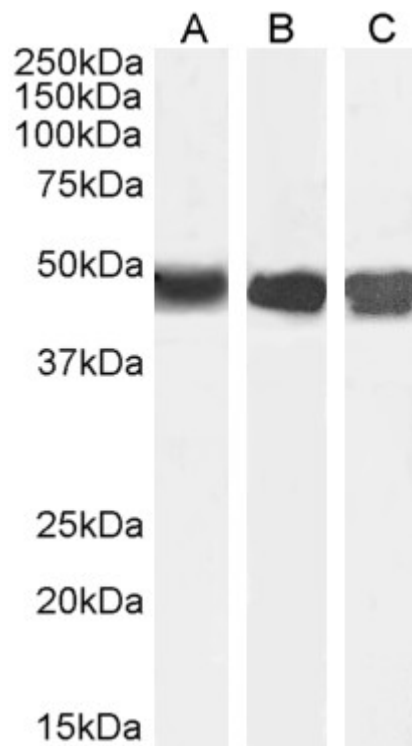
Phosphorylation of argininosuccinate synthase by protein kinase A.

Biochem Biophys Res Commun. 2008 Dec 26;377(4):1042-6.

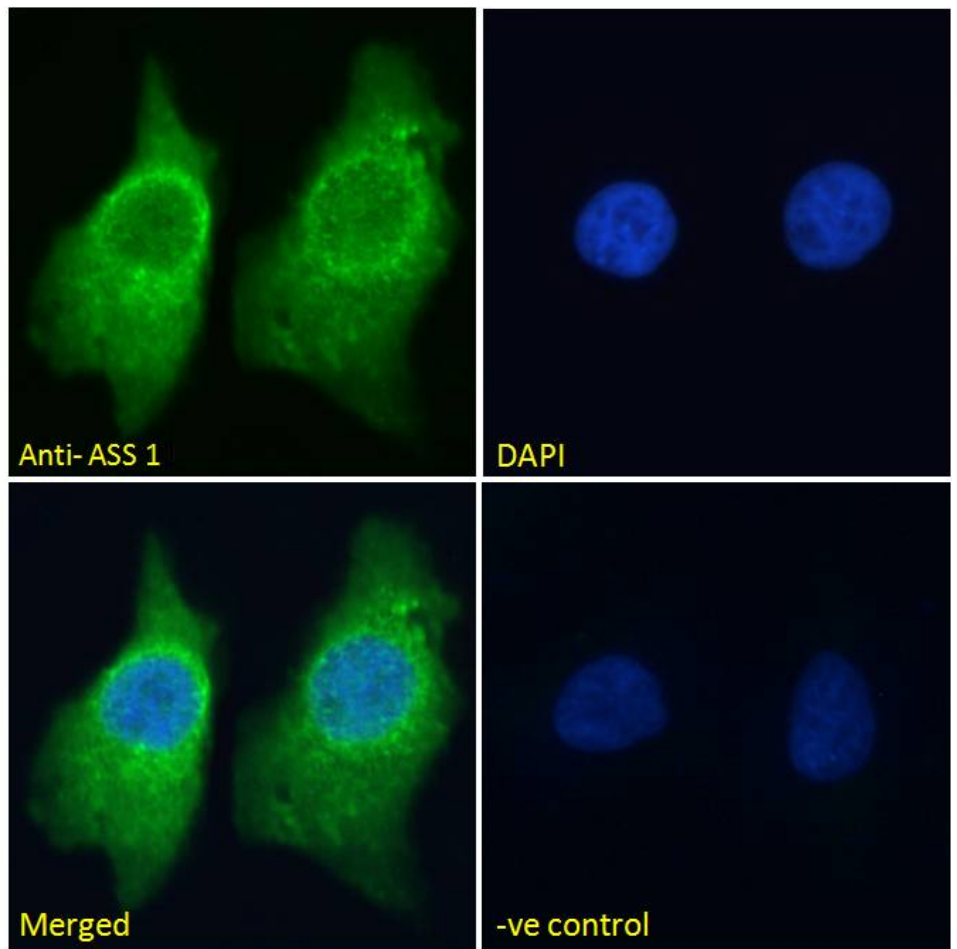
PMID: 18948083



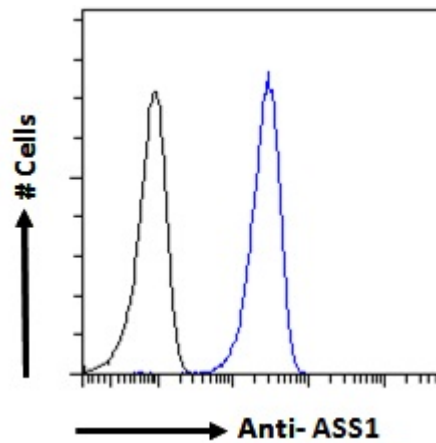
EB07697 (0.3 $\mu$ g/ml) staining of A431 (A) and (1 $\mu$ g/ml) NIH3T3(B) cell lysate (35 $\mu$ g protein in RIPA buffer).  
Detected by chemiluminescence.



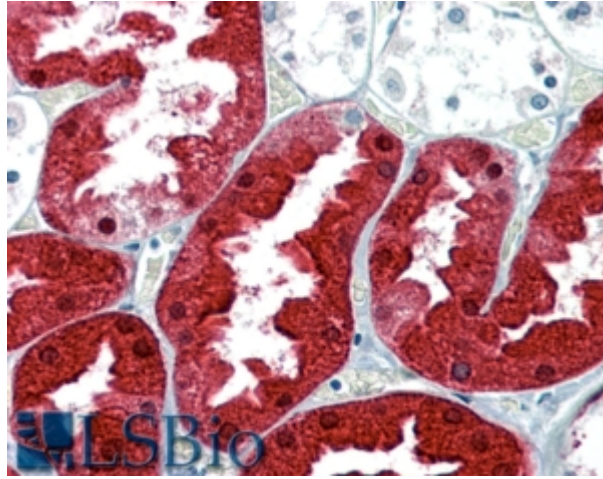
EB07697 (0.01 $\mu$ g/ml) staining of Human Kidney (A) Mouse Liver (B) and (0.03 $\mu$ g/ml) Rat Kidney (C) lysate (35 $\mu$ g protein in RIPA buffer). Detected by chemiluminescence.



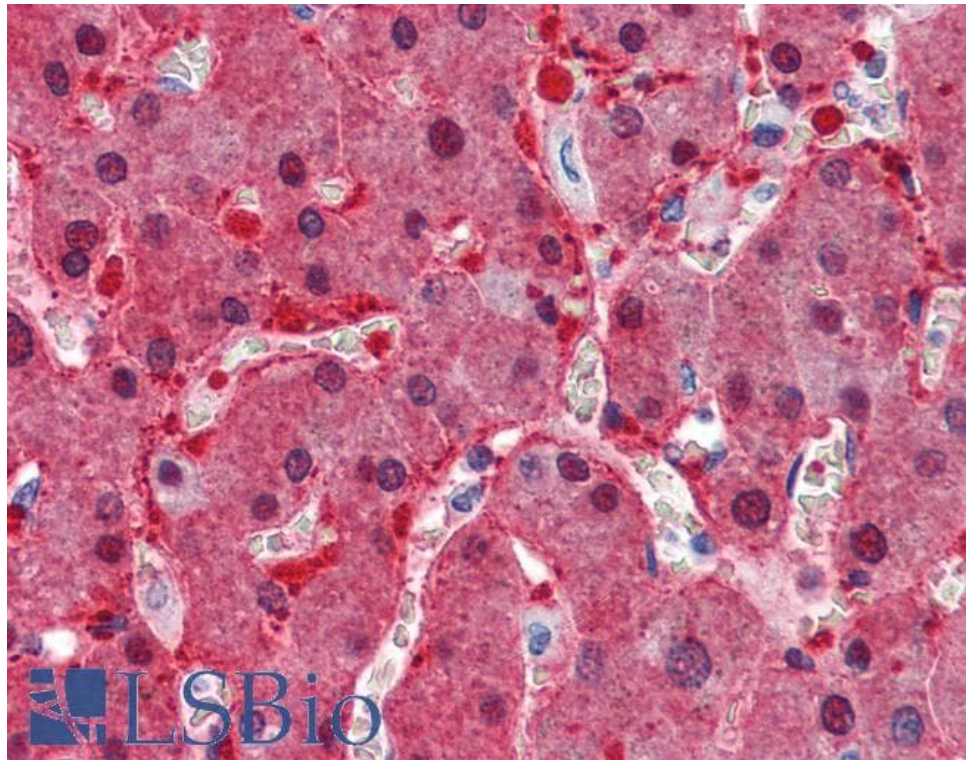
EB07697 Immunofluorescence analysis of paraformaldehyde fixed HeLa cells, permeabilized with 0.15% Triton. Primary incubation 1hr (10ug/ml) followed by Alexa Fluor 488 secondary antibody (2ug/ml), showing cytoplasmic staining. The nuclear stain is DAPI (blue). Negative control: Unimmunized goat IgG (10ug/ml) followed by Alexa Fluor 488 secondary antibody (2ug/ml).



EB07697 Flow cytometric analysis of paraformaldehyde fixed A431 cells (blue line), permeabilized with 0.5% Triton. Primary incubation 1hr (10ug/ml) followed by Alexa Fluor 488 secondary antibody (1ug/ml). IgG control: Unimmunized goat IgG (black line) followed by Alexa Fluor 488 secondary antibody.



EB07697 (2.5µg/ml) staining of paraffin embedded Human Kidney. Steamed antigen retrieval with citrate buffer pH 6, AP-staining.



EB07697 (2.5µg/ml) staining of paraffin embedded Human Liver. Steamed antigen retrieval with citrate buffer pH 6, AP-staining.