



SZABO SCANDIC

Part of Europa Biosite

Produktinformation



Forschungsprodukte & Biochemikalien



Zellkultur & Verbrauchsmaterial



Diagnostik & molekulare Diagnostik



Laborgeräte & Service

Weitere Information auf den folgenden Seiten!
See the following pages for more information!



Lieferung & Zahlungsart

siehe unsere [Liefer- und Versandbedingungen](#)

Zuschläge

- Mindermengenzuschlag
- Trockeneiszuschlag
- Gefahrgutzuschlag
- Expressversand

SZABO-SCANDIC HandelsgmbH

Quellenstraße 110, A-1100 Wien

T. +43(0)1 489 3961-0

F. +43(0)1 489 3961-7

mail@szabo-scandic.com

www.szabo-scandic.com

[linkedin.com/company/szaboscandic](https://www.linkedin.com/company/szaboscandic) 



UK Office

Everest Biotech Ltd

Cherwell Innovation Centre
77 Heyford Park
Upper Heyford
Oxfordshire
OX25 5HD
UK

Enquiries:

info@everestbiotech.com

Sales:

sales@everestbiotech.com

Tech support:

support@everestbiotech.com

Tel: +44 (0)1869 238326

Fax: +44 (0)1869 238327

US Office

Everest Biotech c/o Abcore

405 Maple Street, Suite A106
Ramona,
CA 92065
USA

Inquiries:

info@everestbiotech.com

Sales:

usasales@everestbiotech.com

Tech support:

support@everestbiotech.com

Tel: 888-320-4628 (toll-free)

Fax: 888-841-9041

www.everestbiotech.com

**Research Use Only. Not for
diagnostic or therapeutic use.**

EB07704 - Goat Anti-SMN1 / SMN2 Antibody

Size: 100µg specific antibody in 200µl



Target Protein

Principal Names: SMN1, survival of motor neuron 1, telomeric, BCD541, SMA1, SMA2, SMA3, SMA4, SMN, SMNT, T-BCD541, gemin 1, SMN2, survival of motor neuron 2, centromeric, BCD541, C-BCD541, SMNC

Official Symbol: SMN1 / SMN2

Accession Number(s): NP_075012.1; NP_000335.1; NP_075013.1; NP_075014.1; NP_075015.1; NP_059107.1

Human GeneID(s): [6606](#) , [6607](#)

Important Comments: This antibody is expected to recognise isoforms b and d of SMN1 (NP_075012.1 and NP_000335.1) and all reported isoforms of SMN2 (NP_075013.1, NP_075014.1, NP_075015.1 and NP_059107.1).

Immunogen

Peptide with sequence C-DESENSRSPGNKSDN, from the internal region of the protein sequence according to NP_075012.1; NP_000335.1; NP_075013.1; NP_075014.1; NP_075015.1; NP_059107.1.

Please note the [peptide](#) is available for sale.

Purification and Storage

Purified from goat serum by ammonium sulphate precipitation followed by antigen affinity chromatography using the immunizing peptide.

Supplied at 0.5 mg/ml in Tris saline, 0.02% sodium azide, pH7.3 with 0.5% bovine serum albumin.

Aliquot and store at -20°C. Minimize freezing and thawing.

Applications Tested

Peptide ELISA: antibody detection limit dilution 1:32000.

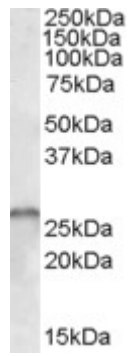
Western blot: Approx 26kDa band observed in Human Brain (Cerebellum) lysates (calculated MW of 28.5kDa according to NP_075012.1 and NP_075014.1).

Recommended concentration: 0.3-1µg/ml.

Species Reactivity

Tested: Human

Expected from sequence similarity: Human



EB07704 (1µg/ml) staining of Human Cerebellum lysate (35µg protein in RIPA buffer). Primary incubation was 1 hour. Detected by chemiluminescence.