



SZABO SCANDIC

Part of Europa Biosite

Produktinformation



Forschungsprodukte & Biochemikalien



Zellkultur & Verbrauchsmaterial



Diagnostik & molekulare Diagnostik



Laborgeräte & Service

Weitere Information auf den folgenden Seiten!
See the following pages for more information!



Lieferung & Zahlungsart

siehe unsere [Liefer- und Versandbedingungen](#)

Zuschläge

- Mindermengenzuschlag
- Trockeneiszuschlag
- Gefahrgutzuschlag
- Expressversand

SZABO-SCANDIC HandelsgmbH

Quellenstraße 110, A-1100 Wien

T. +43(0)1 489 3961-0

F. +43(0)1 489 3961-7

mail@szabo-scandic.com

www.szabo-scandic.com

[linkedin.com/company/szaboscandic](https://www.linkedin.com/company/szaboscandic) 



UK Office

Everest Biotech Ltd

Cherwell Innovation Centre
77 Heyford Park
Upper Heyford
Oxfordshire
OX25 5HD
UK

Enquiries:

info@everestbiotech.com

Sales:

sales@everestbiotech.com

Tech support:

support@everestbiotech.com

Tel: +44 (0)1869 238326

Fax: +44 (0)1869 238327

US Office

Everest Biotech c/o Abcore

405 Maple Street, Suite A106
Ramona,
CA 92065
USA

Inquiries:

info@everestbiotech.com

Sales:

usasales@everestbiotech.com

Tech support:

support@everestbiotech.com

Tel: 888-320-4628 (toll-free)

Fax: 888-841-9041

www.everestbiotech.com

**Research Use Only. Not for
diagnostic or therapeutic use.**

EB07710 - Goat Anti-Galectin 3 Antibody

Size: 100µg specific antibody in 200µl



Target Protein

Principal Names: LGALS3, lectin, galactoside-binding, soluble, 3, CBP35, GAL3, GALBP, GALIG, LGALS2, MAC2, IgE-binding protein, MAC-2 antigen, carbohydrate-binding protein 35, galactose-specific lectin 3, galectin 3, galectin-3 internal gene, laminin-binding protein, lectin, galactoside-binding, soluble, 3 (galectin 3)

Official Symbol: LGALS3

Accession Number(s): NP_002297.2

Human GeneID(s): [3958](#)

Immunogen

Peptide with sequence CNTKLDNNWGREERQ, from the internal region of the protein sequence according to NP_002297.2.

Please note the [peptide](#) is available for sale.

Purification and Storage

Purified from goat serum by ammonium sulphate precipitation followed by antigen affinity chromatography using the immunizing peptide.

Supplied at 0.5 mg/ml in Tris saline, 0.02% sodium azide, pH7.3 with 0.5% bovine serum albumin.

Aliquot and store at -20°C. Minimize freezing and thawing.

Applications Tested

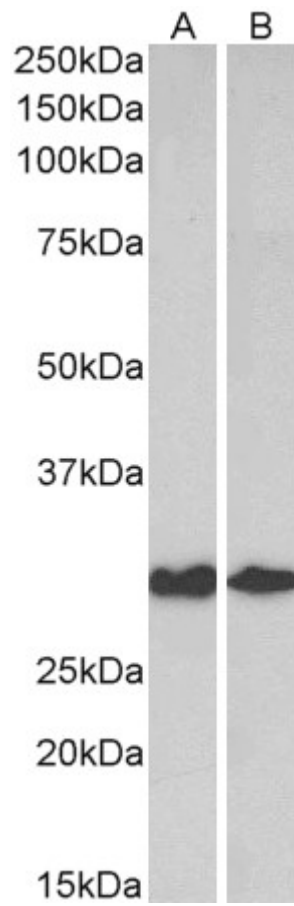
Peptide ELISA: antibody detection limit dilution 1:128000.

Western blot: Approx 30kDa band observed in Human and Mouse Colon lysates (calculated MW of 26.2kDa according to NP_002297.2). The observed molecular weight corresponds to earlier findings in literature with different antibodies (Lotz et al, Proc Natl Acad Sci U S A. 1993 Apr 15;90(8):3466-70. PMID: 7682704). Recommended concentration: 0.3-1µg/ml.

Species Reactivity

Tested: Human, Mouse

Expected from sequence similarity: Human, Mouse, Rat



EB07710 (0.3 μ g/ml) staining of Human (A) and Mouse (B) Colon lysates (35 μ g protein in RIPA buffer). Primary incubation was 1 hour. Detected by chemiluminescence.