



# SZABO SCANDIC

Part of Europa Biosite

## Produktinformation



Forschungsprodukte & Biochemikalien



Zellkultur & Verbrauchsmaterial



Diagnostik & molekulare Diagnostik



Laborgeräte & Service

Weitere Information auf den folgenden Seiten!  
See the following pages for more information!



### Lieferung & Zahlungsart

siehe unsere [Liefer- und Versandbedingungen](#)

### Zuschläge

- Mindermengenzuschlag
- Trockeneiszuschlag
- Gefahrgutzuschlag
- Expressversand

### SZABO-SCANDIC HandelsgmbH

Quellenstraße 110, A-1100 Wien

T. +43(0)1 489 3961-0

F. +43(0)1 489 3961-7

[mail@szabo-scandic.com](mailto:mail@szabo-scandic.com)

[www.szabo-scandic.com](http://www.szabo-scandic.com)

[linkedin.com/company/szaboscandic](https://www.linkedin.com/company/szaboscandic) 



## UK Office

### Everest Biotech Ltd

Cherwell Innovation Centre  
77 Heyford Park  
Upper Heyford  
Oxfordshire  
OX25 5HD  
UK

Enquiries:

[info@everestbiotech.com](mailto:info@everestbiotech.com)

Sales:

[sales@everestbiotech.com](mailto:sales@everestbiotech.com)

Tech support:

[support@everestbiotech.com](mailto:support@everestbiotech.com)

Tel: +44 (0)1869 238326

Fax: +44 (0)1869 238327

## US Office

### Everest Biotech c/o Abcore

405 Maple Street, Suite A106  
Ramona,  
CA 92065  
USA

Inquiries:

[info@everestbiotech.com](mailto:info@everestbiotech.com)

Sales:

[usasales@everestbiotech.com](mailto:usasales@everestbiotech.com)

Tech support:

[support@everestbiotech.com](mailto:support@everestbiotech.com)

Tel: 888-320-4628 (toll-free)

Fax: 888-841-9041

[www.everestbiotech.com](http://www.everestbiotech.com)

**Research Use Only. Not for  
diagnostic or therapeutic use.**

## EB07716 - Goat Anti-Uncoupling protein 2 / UCP2 Antibody

Size: 100µg specific antibody in 200µl



### Target Protein

**Principal Names:** UCP2, uncoupling protein 2 (mitochondrial, proton carrier), SLC25A8, UCPH, uncoupling protein 2, uncoupling protein-2

**Official Symbol:** UCP2

**Accession Number(s):** NP\_003346.2

**Human GeneID(s):** [7351](#)

**Non-Human GeneID(s):** 22228 (mouse), 54315 (rat)

### Immunogen

Peptide with sequence C-DSVKQFYTKGSEH, from the internal region of the protein sequence according to NP\_003346.2.

Please note the [peptide](#) is available for sale.

### Purification and Storage

Purified from goat serum by ammonium sulphate precipitation followed by antigen affinity chromatography using the immunizing peptide.

Supplied at 0.5 mg/ml in Tris saline, 0.02% sodium azide, pH7.3 with 0.5% bovine serum albumin.

Aliquot and store at -20°C. Minimize freezing and thawing.

### Applications Tested

**Peptide ELISA:** antibody detection limit dilution 1:128000.

**Western blot:** Approx 37kDa band observed in Rat Adipose and 28-30kDa in Mouse Spleen lysates (calculated MW of 33.4kDa according to Mouse NP\_035801.3 and 33.4kDa according to Rat NP\_062227.2). Recommended concentration: 0.3-1µg/ml. Primary incubation 1 hour at room temperature.

**IHC:** Weak positive staining of red and white pulp cells in paraffin embedded Human Kidney, at 6-7µg/ml.

**Immunofluorescence:** Strong expression of the protein seen in the Mitochondria of MCF7 cells. Recommended concentration: 10µg/ml.

### Species Reactivity

**Tested:** Human, Mouse, Rat

**Expected from sequence similarity:** Human, Mouse, Rat, Dog

### Specific Reference

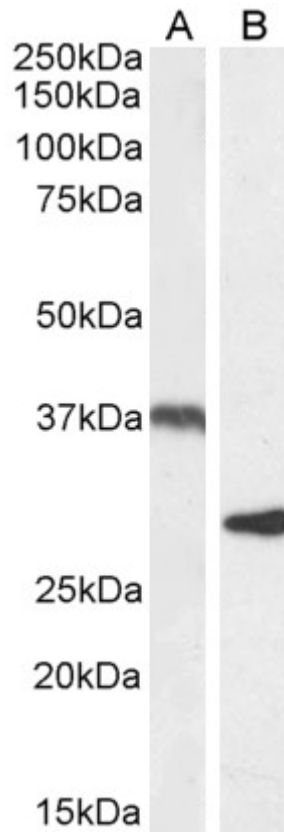
**This antibody (previous batch) has been successfully used in IF/ICC in Mouse :**

Allister EM, Robson-Doucette CA, Prentice KJ, Hardy AB, Sultan S, Gaisano HY, Kong D, Gilon P, Herrera PL, Lowell BB, Wheeler MB.

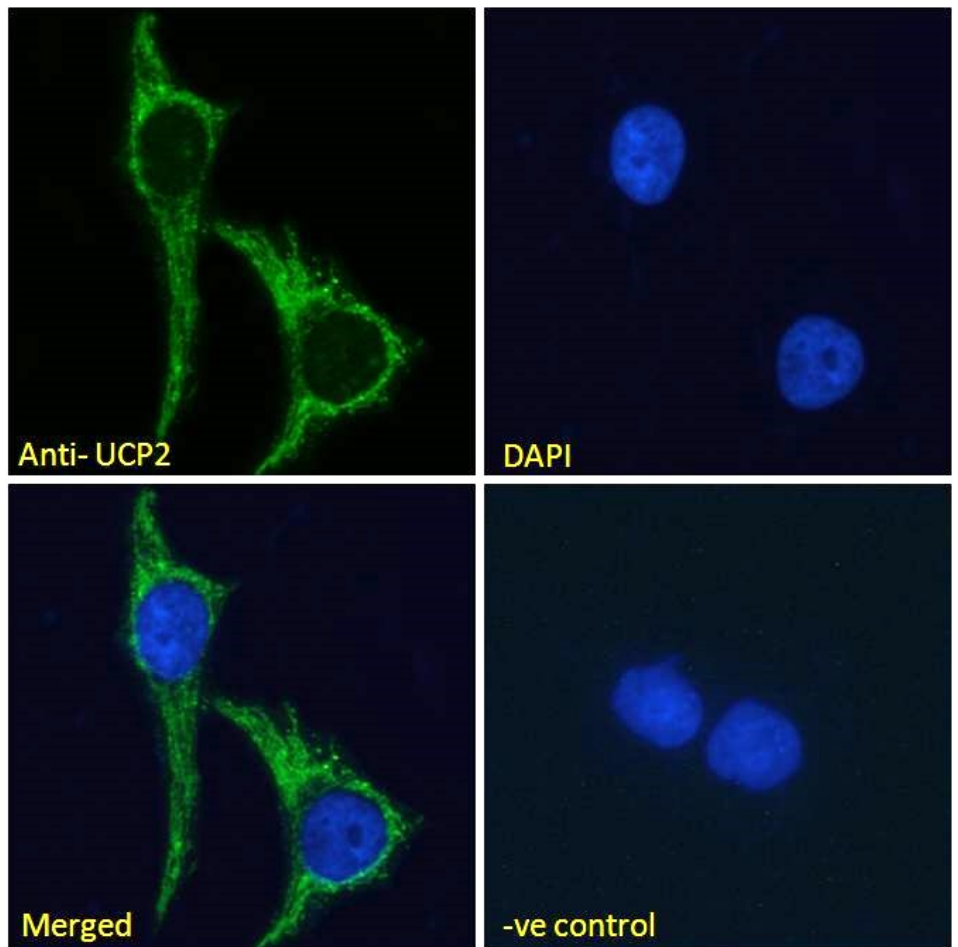
UCP2 Regulates the Glucagon Response to Fasting and Starvation.

Diabetes. 2013 Feb 22. [Epub ahead of print]

PMID: 23434936



EB07716 (1 $\mu$ g/ml) staining of Rat Adipose (A) and Mouse Spleen (B) lysate (35 $\mu$ g protein in RIPA buffer). Detected by chemiluminescence.



EB07716 Immunofluorescence analysis of paraformaldehyde fixed MCF7 cells, permeabilized with 0.15% Triton. Primary incubation 1hr (10ug/ml) followed by Alexa Fluor 488 secondary antibody (2ug/ml), showing Mitochondrial staining. The nuclear stain is DAPI (blue). Negative control: Unimmunized goat IgG (10ug/ml) followed by Alexa Fluor 488 secondary antibody (2ug/ml).