



SZABO SCANDIC

Part of Europa Biosite

Produktinformation



Forschungsprodukte & Biochemikalien



Zellkultur & Verbrauchsmaterial



Diagnostik & molekulare Diagnostik



Laborgeräte & Service

Weitere Information auf den folgenden Seiten!
See the following pages for more information!



Lieferung & Zahlungsart

siehe unsere [Liefer- und Versandbedingungen](#)

Zuschläge

- Mindermengenzuschlag
- Trockeneiszuschlag
- Gefahrgutzuschlag
- Expressversand

SZABO-SCANDIC HandelsgmbH

Quellenstraße 110, A-1100 Wien

T. +43(0)1 489 3961-0

F. +43(0)1 489 3961-7

mail@szabo-scandic.com

www.szabo-scandic.com

[linkedin.com/company/szaboscandic](https://www.linkedin.com/company/szaboscandic) 



UK Office

Everest Biotech Ltd

Cherwell Innovation Centre
77 Heyford Park
Upper Heyford
Oxfordshire
OX25 5HD
UK

Enquiries:

info@everestbiotech.com

Sales:

sales@everestbiotech.com

Tech support:

support@everestbiotech.com

Tel: +44 (0)1869 238326

Fax: +44 (0)1869 238327

US Office

Everest Biotech c/o Abcore

405 Maple Street, Suite A106
Ramona,
CA 92065
USA

Inquiries:

info@everestbiotech.com

Sales:

usasales@everestbiotech.com

Tech support:

support@everestbiotech.com

Tel: 888-320-4628 (toll-free)

Fax: 888-841-9041

www.everestbiotech.com

**Research Use Only. Not for
diagnostic or therapeutic use.**

EB07728 - Goat Anti-Perilipin 1 (C Terminus) Antibody

Size: 100µg specific antibody in 200µl



Target Protein

Principal Names: Plin, perilipin, PER1, lipid droplet-associated protein, PLIN1, Perilipin1, Perilipin 1

Official Symbol: PLIN1

Accession Number(s): NP_002657.3

Human GeneID(s): [5346](#)

Non-Human GeneID(s): 25629 (rat)

Immunogen

Peptide with sequence C-EPILGRAQYSQRKK, from the C Terminus of the protein sequence according to NP_002657.3.

Please note the [peptide](#) is available for sale.

Purification and Storage

Purified from goat serum by ammonium sulphate precipitation followed by antigen affinity chromatography using the immunizing peptide.

Supplied at 0.5 mg/ml in Tris saline, 0.02% sodium azide, pH7.3 with 0.5% bovine serum albumin.

Aliquot and store at -20°C. Minimize freezing and thawing.

Applications Tested

Peptide ELISA: antibody detection limit dilution 1:64000.

Western blot: Approx 55kDa band observed in Human Breast and Breast cancer lysates, and in lysates of cell line Jurkat (calculated MW of 56.0kDa according to NP_002657.3). Recommended concentration: 0.5-2µg/ml. Primary incubation 1 hour at room temperature.

Species Reactivity

Tested: Human

Expected from sequence similarity: Human, Rat, Dog

Specific References

This antibody (previous batch) has been successfully used in IHC on Mouse:

Rayanne B Burl, Elizabeth Ann Rondini, Hongguang Wei, Roger Pique-Regi, James G Granneman

Deconstructing cold-induced brown adipocyte neogenesis in mice.

Elife. 2022 Jul18;11:e80167.doi:10.7554/eLife.80167.

PMID: 35848799

This antibody (previous batch) has been successfully used in IF on Human:

Emilio P.Mottillo, Huamei Zhang, Alexander Yang, Li Zhou, James G.Granneman

Genetically-encoded sensors to detect fatty acid production and trafficking

Molecular Metabolism, Vol 29, Nov. 2019, <https://doi.org/10.1016/j.molmet.2019.08.012>

PMID: 31668392

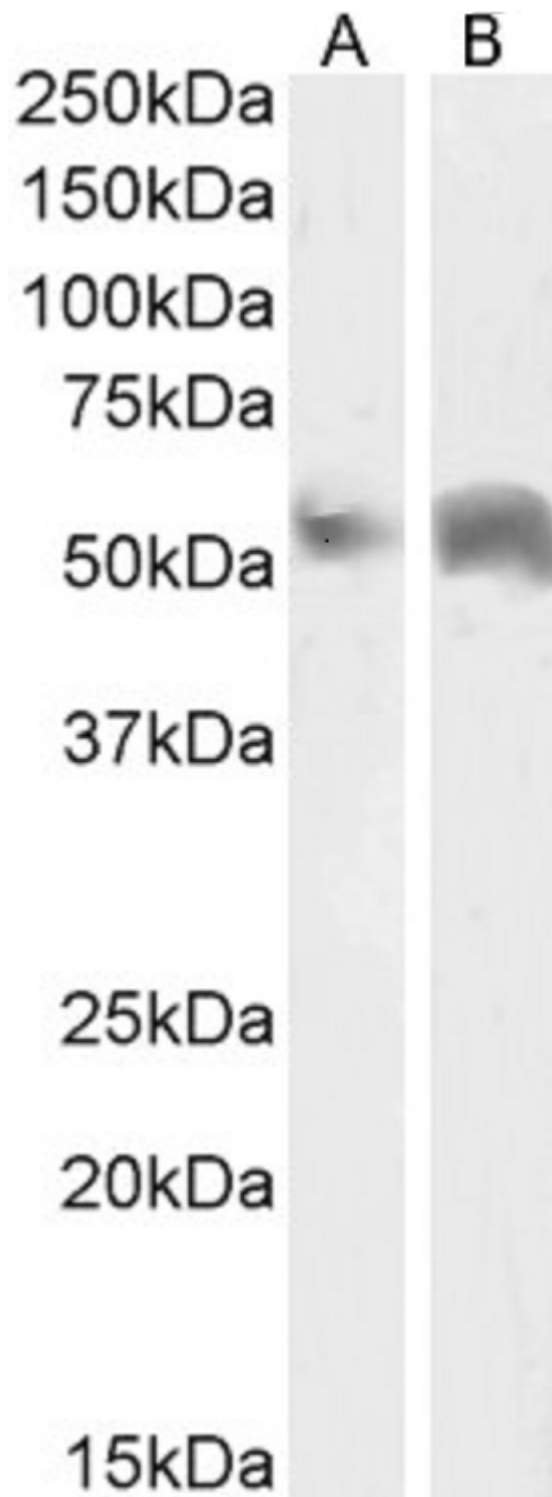
This antibody (previous batch) has been successfully used in IHC and IF on Mouse:

Lee YH, Petkova AP, Konkar AA, Granneman JG.

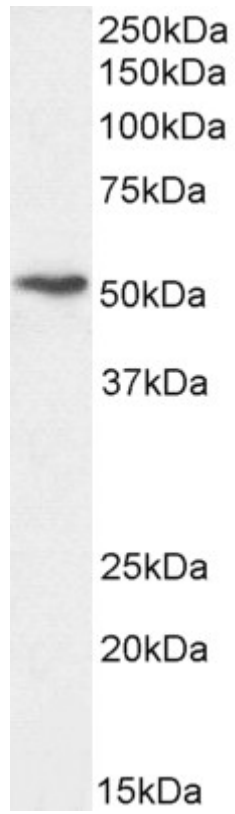
Cellular origins of cold-induced brown adipocytes in adult mice.

FASEB J. 2015 Jan;29(1):286-99.

PMID: 25392270



EB07728 (2 μ g/ml) staining of Human Breast (A) and (1 μ g/ml) Breast cancer (B) lysate (35 μ g protein in RIPA buffer). Detected by chemiluminescence.



EB07728 (1 μ g/ml) staining of Jurkat cell lysate (35 μ g protein in RIPA buffer). Detected by chemiluminescence.