



# SZABO SCANDIC

Part of Europa Biosite

## Produktinformation



Forschungsprodukte & Biochemikalien



Zellkultur & Verbrauchsmaterial



Diagnostik & molekulare Diagnostik



Laborgeräte & Service

Weitere Information auf den folgenden Seiten!  
See the following pages for more information!



### Lieferung & Zahlungsart

siehe unsere [Liefer- und Versandbedingungen](#)

### Zuschläge

- Mindermengenzuschlag
- Trockeneiszuschlag
- Gefahrgutzuschlag
- Expressversand

### SZABO-SCANDIC HandelsgmbH

Quellenstraße 110, A-1100 Wien

T. +43(0)1 489 3961-0

F. +43(0)1 489 3961-7

[mail@szabo-scandic.com](mailto:mail@szabo-scandic.com)

[www.szabo-scandic.com](http://www.szabo-scandic.com)

[linkedin.com/company/szaboscandic](https://www.linkedin.com/company/szaboscandic) 



## UK Office

### Everest Biotech Ltd

Cherwell Innovation Centre  
77 Heyford Park  
Upper Heyford  
Oxfordshire  
OX25 5HD  
UK

Enquiries:

[info@everestbiotech.com](mailto:info@everestbiotech.com)

Sales:

[sales@everestbiotech.com](mailto:sales@everestbiotech.com)

Tech support:

[support@everestbiotech.com](mailto:support@everestbiotech.com)

Tel: +44 (0)1869 238326

Fax: +44 (0)1869 238327

## US Office

### Everest Biotech c/o Abcore

405 Maple Street, Suite A106  
Ramona,  
CA 92065  
USA

Inquiries:

[info@everestbiotech.com](mailto:info@everestbiotech.com)

Sales:

[usasales@everestbiotech.com](mailto:usasales@everestbiotech.com)

Tech support:

[support@everestbiotech.com](mailto:support@everestbiotech.com)

Tel: 888-320-4628 (toll-free)

Fax: 888-841-9041

[www.everestbiotech.com](http://www.everestbiotech.com)

**Research Use Only. Not for  
diagnostic or therapeutic use.**

## EB07758 - Goat Anti-CSNK1E Antibody

Size: 100µg specific antibody in 200µl



### Target Protein

**Principal Names:** CSNK1E, casein kinase 1, epsilon, RP1-5O6.1, HCKIE, MGC10398, CKI-epsilon, OTTHUMP00000063258, OTTHUMP00000063263, casein kinase 1 epsilon, casein kinase I epsilon

**Official Symbol:** CSNK1E

**Accession Number(s):** NP\_001276841.1

**Human GeneID(s):** [1454](#)

**Non-Human GeneID(s):** 27373 (mouse), 58822 (rat)

### Immunogen

Peptide with sequence C-PASQTSVPFDHLGK, from the C Terminus of the protein sequence according to NP\_001276841.1.

Please note the [peptide](#) is available for sale.

### Purification and Storage

Purified from goat serum by ammonium sulphate precipitation followed by antigen affinity chromatography using the immunizing peptide.

Supplied at 0.5 mg/ml in Tris saline, 0.02% sodium azide, pH7.3 with 0.5% bovine serum albumin.

Aliquot and store at -20°C. Minimize freezing and thawing.

### Applications Tested

**Peptide ELISA:** antibody detection limit dilution 1:32000.

**Western blot:** Approx 48kDa band observed in nuclear lysates of cell lines A431 and HeLa, and approx 45kDa in nuclear lysates of cell line K562 (calculated MW of 47.3kDa according to NP\_001276841.1). Recommended concentration: 0.3-1µg/ml. Primary incubation 1 hour at room temperature.

**IHC:** Paraffin embedded Human Tonsil. Recommended concentration: 5µg/ml.

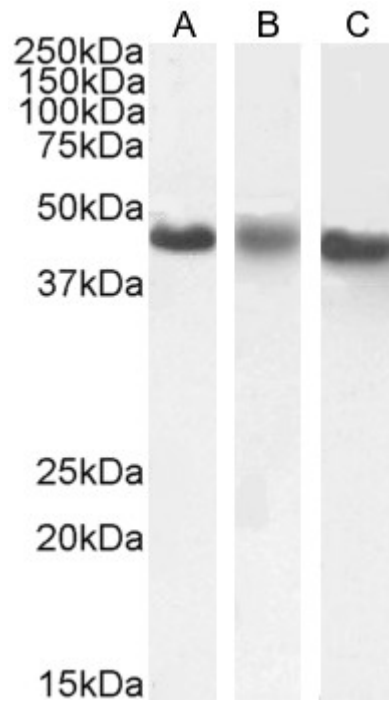
**Immunofluorescence:** Strong expression of the protein seen in the cytoplasm of HeLa and A431 cells. Recommended concentration: 10µg/ml.

**Flow Cytometry:** Flow cytometric analysis of A431 cells. Recommended concentration: 10ug/ml.

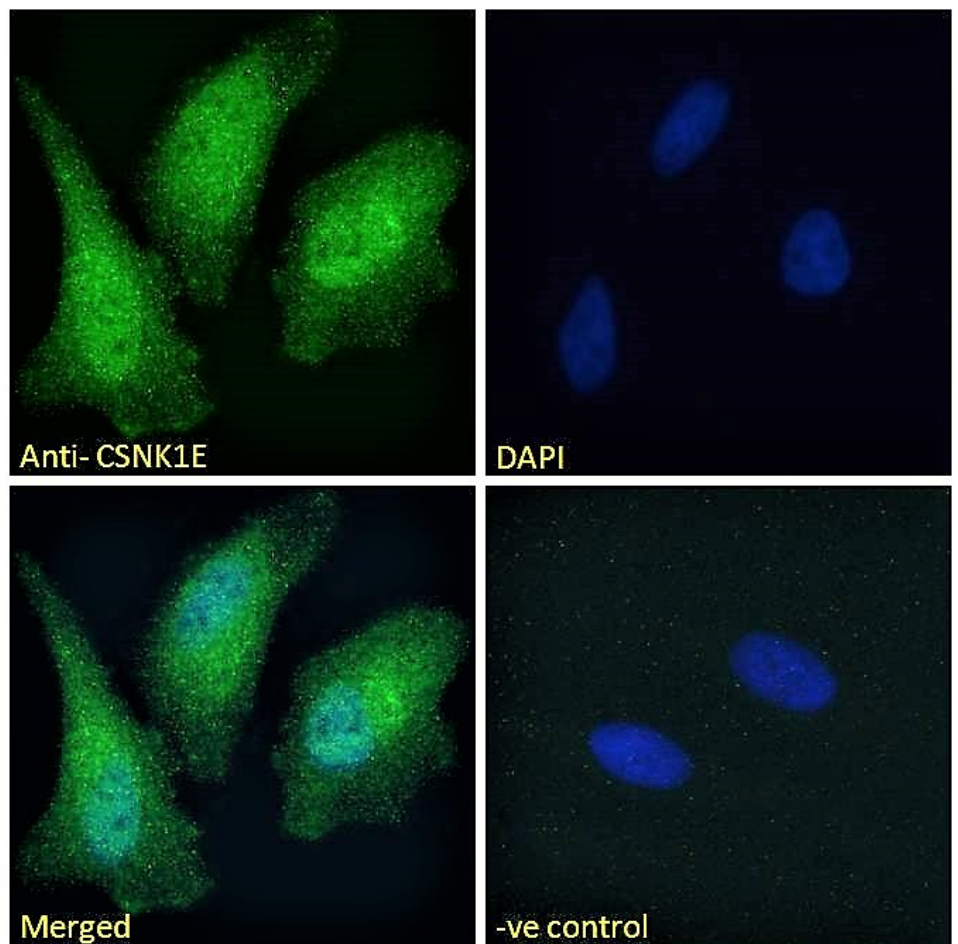
### Species Reactivity

**Tested:** Human

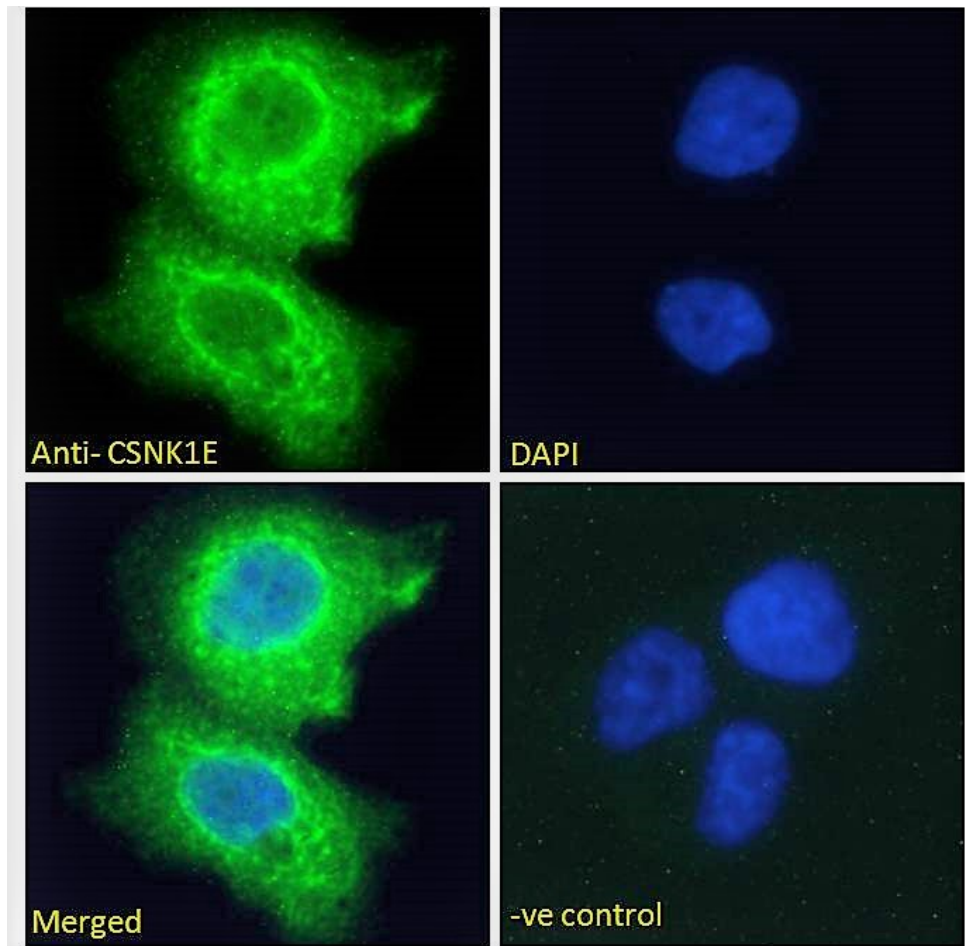
**Expected from sequence similarity:** Human, Mouse, Rat, Dog



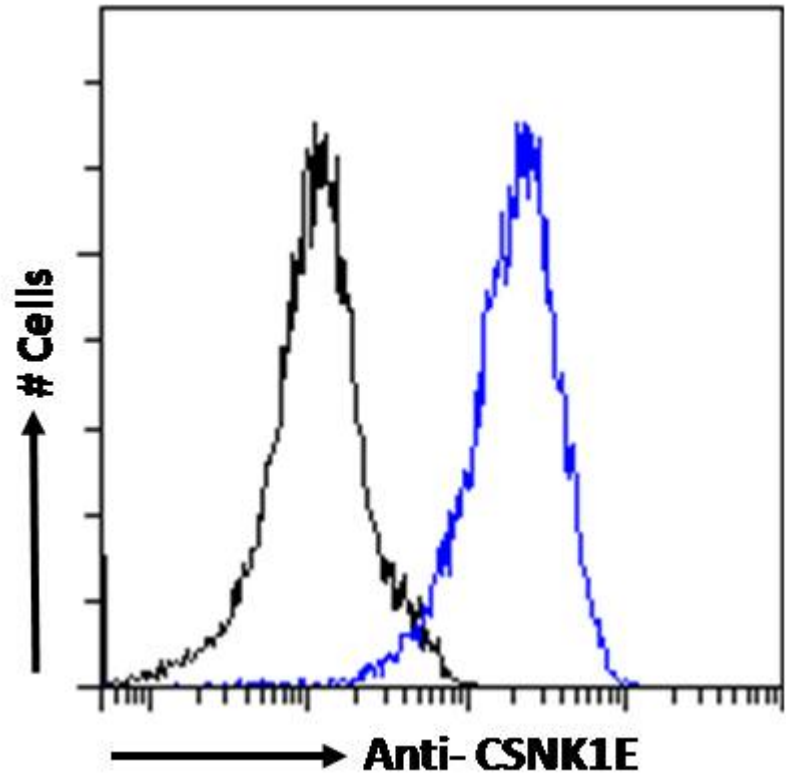
EB07758 (1 $\mu$ g/ml) staining of A431(A), HeLa (B) and K562 (C) nuclear cell lysate (35 $\mu$ g protein in RIPA buffer).  
Detected by chemiluminescence.



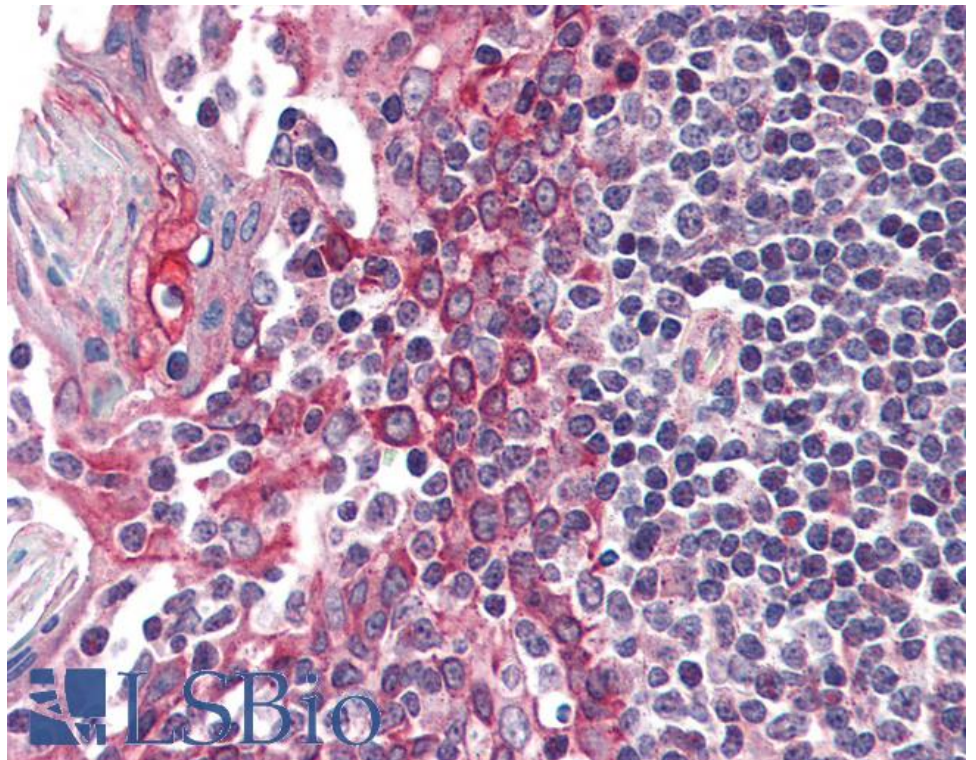
EB07758 Immunofluorescence analysis of paraformaldehyde fixed HeLa cells, permeabilized with 0.15% Triton. Primary incubation 1hr (10 $\mu$ g/ml) followed by Alexa Fluor 488 secondary antibody (2 $\mu$ g/ml), showing nuclear and cytoplasmic staining. The nuclear stain is DAPI (blue). Negative control: Unimmunized goat IgG (10 $\mu$ g/ml) followed by Alexa Fluor 488 secondary antibody (2 $\mu$ g/ml).



EB07758 Immunofluorescence analysis of paraformaldehyde fixed A431 cells, permeabilized with 0.15% Triton. Primary incubation 1hr (10ug/ml) followed by Alexa Fluor 488 secondary antibody (2ug/ml), showing cytoplasmic staining. The nuclear stain is DAPI (blue). Negative control: Unimmunized goat IgG (10ug/ml) followed by Alexa Fluor 488 secondary antibody (2ug/ml).



EB07758 Flow cytometric analysis of paraformaldehyde fixed A431 cells (blue line), permeabilized with 0.5% Triton. Primary incubation 1hr (10ug/ml) followed by Alexa Fluor 488 secondary antibody (1ug/ml). IgG control: Unimmunized goat IgG (black line) followed by Alexa Fluor 488 secondary antibody.



EB07758 (5µg/ml) staining of paraffin embedded Human Tonsil. Steamed antigen retrieval with citrate buffer Ph 6, AP-staining.