



SZABO SCANDIC

Part of Europa Biosite

Produktinformation



Forschungsprodukte & Biochemikalien



Zellkultur & Verbrauchsmaterial



Diagnostik & molekulare Diagnostik



Laborgeräte & Service

Weitere Information auf den folgenden Seiten!
See the following pages for more information!



Lieferung & Zahlungsart

siehe unsere [Liefer- und Versandbedingungen](#)

Zuschläge

- Mindermengenzuschlag
- Trockeneiszuschlag
- Gefahrgutzuschlag
- Expressversand

SZABO-SCANDIC HandelsgmbH

Quellenstraße 110, A-1100 Wien

T. +43(0)1 489 3961-0

F. +43(0)1 489 3961-7

mail@szabo-scandic.com

www.szabo-scandic.com

[linkedin.com/company/szaboscandic](https://www.linkedin.com/company/szaboscandic) 



UK Office

Everest Biotech Ltd

Cherwell Innovation Centre
77 Heyford Park
Upper Heyford
Oxfordshire
OX25 5HD
UK

Enquiries:

info@everestbiotech.com

Sales:

sales@everestbiotech.com

Tech support:

support@everestbiotech.com

Tel: +44 (0)1869 238326

Fax: +44 (0)1869 238327

US Office

Everest Biotech c/o Abcore

405 Maple Street, Suite A106
Ramona,
CA 92065
USA

Inquiries:

info@everestbiotech.com

Sales:

usasales@everestbiotech.com

Tech support:

support@everestbiotech.com

Tel: 888-320-4628 (toll-free)

Fax: 888-841-9041

www.everestbiotech.com

**Research Use Only. Not for
diagnostic or therapeutic use.**

EB07772 - Goat Anti-PAX6 (internal) Antibody

Size: 100µg specific antibody in 200µl



Target Protein

Principal Names: PAX6, paired box gene 6 (aniridia, keratitis), AN, AN2, D11S812E, MGC17209, MGDA, WAGR, paired box gene 6, paired box homeotic gene 6 (aniridia, keratitis), paired box homeotic gene-6

Official Symbol: PAX6

Accession Number(s): NP_000271.1; NP_001595.2; NP_001297088.1; NP_001355839.1; NP_001355840.1; NP_001355841.1; NP_001355844.1; NP_001355847.1; NP_001355849.1; NP_001355850.1; NP_001355851.1; NP_001355857.1; NP_001355858.1; NP_001355859.1

Human GeneID(s): [5080](#)

Non-Human GeneID(s): 18508 (mouse), 25509 (rat)

Important Comments: This antibody is expected to recognize all reported isoforms: NP_000271.1; NP_001595.2; NP_001297088.1; NP_001355839.1; NP_001355840.1; NP_001355841.1; NP_001355844.1; NP_001355847.1; NP_001355849.1; NP_001355850.1; NP_001355851.1; NP_001355857.1; NP_001355858.1; NP_001355859.1.

Immunogen

Peptide with sequence C-REEKLRNQRRQASN, from the internal region of the protein sequence according to NP_000271.1; NP_001595.2; NP_001297088.1; NP_001355839.1; NP_001355840.1; NP_001355841.1; NP_001355844.1; NP_001355847.1; NP_001355849.1; NP_001355850.1; NP_001355851.1; NP_001355857.1; NP_001355858.1; NP_001355859.1.

Please note the [peptide](#) is available for sale.

Purification and Storage

Purified from goat serum by ammonium sulphate precipitation followed by antigen affinity chromatography using the immunizing peptide.

Supplied at 0.5 mg/ml in Tris saline, 0.02% sodium azide, pH7.3 with 0.5% bovine serum albumin.

Aliquot and store at -20°C. Minimize freezing and thawing.

Applications Tested

Peptide ELISA: antibody detection limit dilution 1:32000.

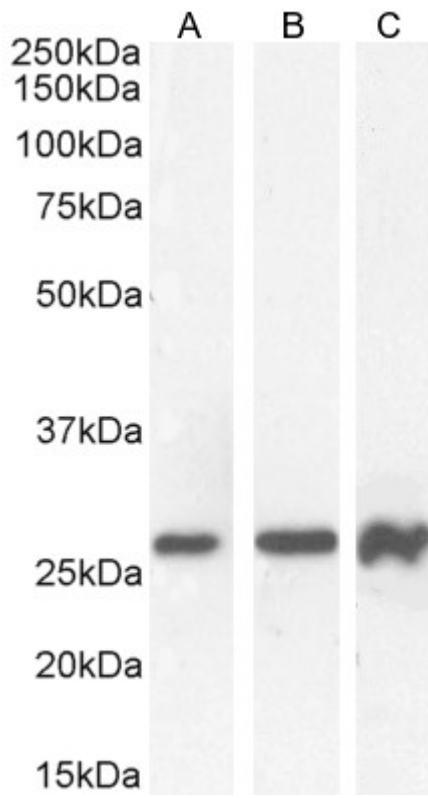
Western blot: Approx 26kDa band observed in lysates of cell lines U251 and RAW264.7 and in nuclear lysates of cell lines K562 and HeLa, all successfully blocked by incubation with the immunising peptide (calculated MW of 24.8kDa according to Human NP_001355859.1 and 31.8 according to Mouse NP_001297075.1). Recommended concentration: 0.03-1µg/ml. Primary incubation 1 hour at room temperature.

Flow Cytometry: Flow cytometric analysis of U251 cells. Recommended concentration: 10ug/ml.

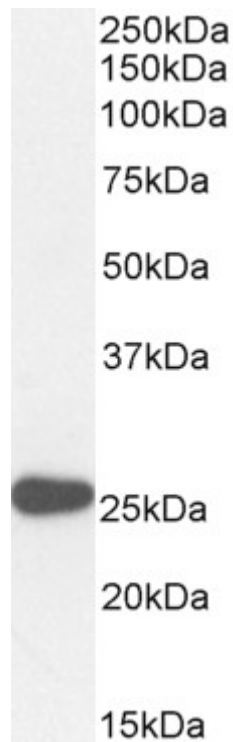
Species Reactivity

Tested: Human, Mouse

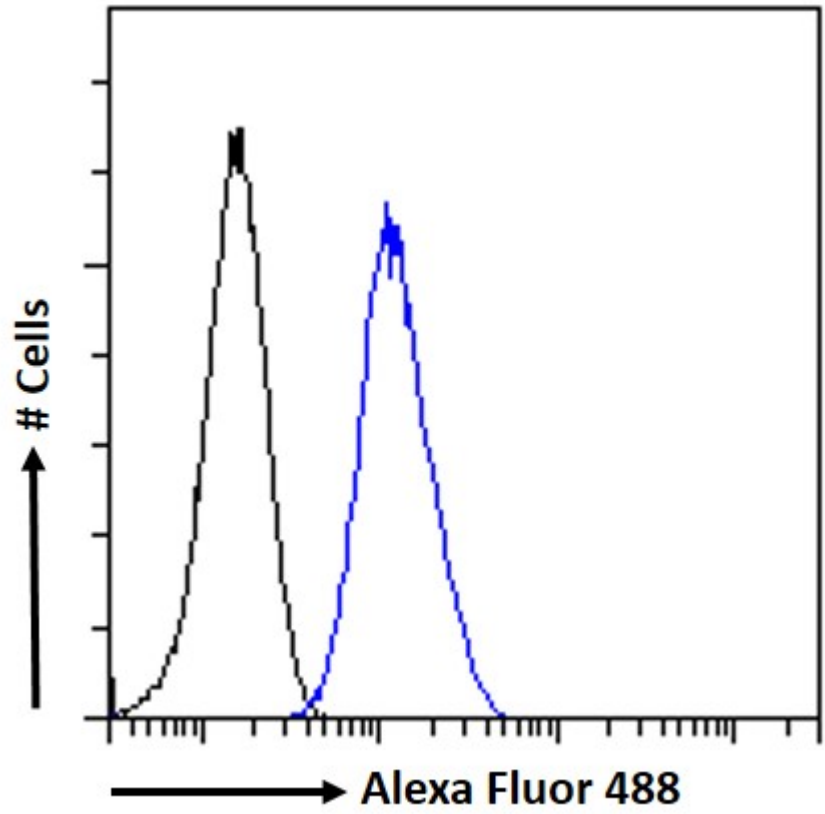
Expected from sequence similarity: Human, Mouse, Rat, Frog, Cow



EB07772 (0.3 μ g/ml) staining of U251 (A), (0.03 μ g/ml) nuclear K562 (B) and (1 μ g/ml) nuclear HeLa (C) cell lysate (35 μ g protein in RIPA buffer). Detected by chemiluminescence.



.EB07772 (0.5 μ g/ml) staining of RAW264.7 cell lysate (35 μ g protein in RIPA buffer). Detected by chemiluminescence.



EB07772 Flow cytometric analysis of paraformaldehyde fixed U251 cells (blue line), permeabilized with 0.5% Triton. Primary incubation 1hr (10ug/ml) followed by Alexa Fluor 488 secondary antibody (1ug/ml). IgG control: Unimmunized goat IgG (black line) followed by Alexa Fluor 488 secondary antibody.