



SZABO SCANDIC

Part of Europa Biosite

Produktinformation



Forschungsprodukte & Biochemikalien



Zellkultur & Verbrauchsmaterial



Diagnostik & molekulare Diagnostik



Laborgeräte & Service

Weitere Information auf den folgenden Seiten!
See the following pages for more information!



Lieferung & Zahlungsart

siehe unsere [Liefer- und Versandbedingungen](#)

Zuschläge

- Mindermengenzuschlag
- Trockeneiszuschlag
- Gefahrgutzuschlag
- Expressversand

SZABO-SCANDIC HandelsgmbH

Quellenstraße 110, A-1100 Wien

T. +43(0)1 489 3961-0

F. +43(0)1 489 3961-7

mail@szabo-scandic.com

www.szabo-scandic.com

[linkedin.com/company/szaboscandic](https://www.linkedin.com/company/szaboscandic) 



UK Office

Everest Biotech Ltd

Cherwell Innovation Centre
77 Heyford Park
Upper Heyford
Oxfordshire
OX25 5HD
UK

Enquiries:

info@everestbiotech.com

Sales:

sales@everestbiotech.com

Tech support:

support@everestbiotech.com

Tel: +44 (0)1869 238326

Fax: +44 (0)1869 238327

US Office

Everest Biotech c/o Abcore

405 Maple Street, Suite A106
Ramona,
CA 92065
USA

Inquiries:

info@everestbiotech.com

Sales:

usasales@everestbiotech.com

Tech support:

support@everestbiotech.com

Tel: 888-320-4628 (toll-free)

Fax: 888-841-9041

www.everestbiotech.com

**Research Use Only. Not for
diagnostic or therapeutic use.**

EB07839 - Goat Anti-PTF1A / PFT1-P48 Antibody

Size: 100µg specific antibody in 200µl



Target Protein

Principal Names: PTF1A, PTF1-p48, pancreas specific transcription factor, 1a, bHLH transcription factor p48, class II bHLH protein PTF1A, exocrine pancreas-specific transcription factor p48, p48 DNA-binding subunit of transcription factor PTF1, pancreas transcription factor 1 subunit alpha

Official Symbol: PTF1A

Accession Number(s): NP_835455.1

Human GeneID(s): [256297](#)

Non-Human GeneID(s): 19213 (mouse), 117034 (rat)

Immunogen

Peptide with sequence C-WTDEKQLKEQN, from the internal region of the protein sequence according to NP_835455.1.

Please note the [peptide](#) is available for sale.

Purification and Storage

Purified from goat serum by ammonium sulphate precipitation followed by antigen affinity chromatography using the immunizing peptide.

Supplied at 0.5 mg/ml in Tris saline, 0.02% sodium azide, pH7.3 with 0.5% bovine serum albumin.

Aliquot and store at -20°C. Minimize freezing and thawing.

Applications Tested

Peptide ELISA: antibody detection limit dilution 1:128000.

Western blot: Approx 37kDa observe in Human Pancreas lysates and approx.38-40kDa in lysates of cell lines Jurkat, U2OS and NIH3T3 ,(calculated MW of 35.0kDa according to Human NP_835455.1 and 35.2kDa according to Mouse NP_061279.2). Recommended concentration: 0.5-2µg/ml. Primary incubation 1 hour at room temperature.

Species Reactivity

Tested: Human, Mouse

Expected from sequence similarity: Human, Mouse, Rat, Dog, Zebrafish

Specific References

This antibody (previous batch) has been successfully used in Western blot in Mouse:

Holmstrom SR, Deering T, Swift GH, Poelwijk FJ, Mangelsdorf DJ, Kliewer SA, MacDonald RJ.

LRH-1 and PTF1-L coregulate an exocrine pancreas-specific transcriptional network for digestive function.

Genes Dev. 2011 Aug 15;25(16):1674-9.

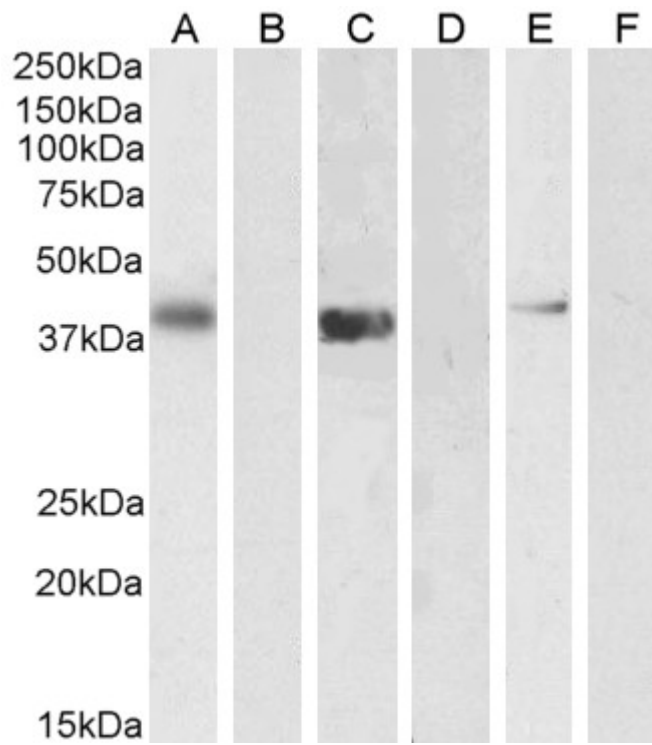
PMID: 21852532

This antibody (previous batch) has been successfully used in ICC in Human and Mouse:

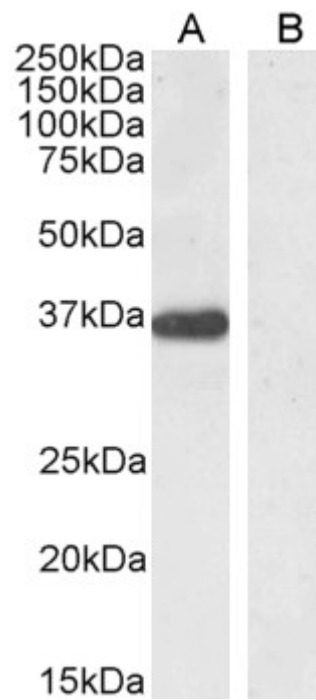
Andreia S. Bernardo, Candy H.-H. Cho, Sharon Mason, Hilary M Docherty, Roger A. Pedersen, Ludovic Vallier and Kevin Docherty.

Biphasic Induction of Pdx1 in Mouse and Human Embryonic Stem Cells Can Mimic Development of Pancreatic β-Cells.

Stem Cells. 2009 Feb;27(2):341-51.
PMID: 19056911



EB07839 (1 μ g/ml) staining of U2OS (A) + peptide (B), (0.5 μ g/ml) Jurkat (C) + peptide (D) and NIH3T3 (E) + peptide (F) cell lysate (35 μ g protein in RIPA buffer). Detected by chemiluminescence.



EB07839 (0.5 μ g/ml) staining of Human Pancreas lysate (35 μ g protein in RIPA buffer). Detected by chemiluminescence.