



SZABO SCANDIC

Part of Europa Biosite

Produktinformation



Forschungsprodukte & Biochemikalien



Zellkultur & Verbrauchsmaterial



Diagnostik & molekulare Diagnostik



Laborgeräte & Service

Weitere Information auf den folgenden Seiten!
See the following pages for more information!



Lieferung & Zahlungsart

siehe unsere [Liefer- und Versandbedingungen](#)

Zuschläge

- Mindermengenzuschlag
- Trockeneiszuschlag
- Gefahrgutzuschlag
- Expressversand

SZABO-SCANDIC HandelsgmbH

Quellenstraße 110, A-1100 Wien

T. +43(0)1 489 3961-0

F. +43(0)1 489 3961-7

mail@szabo-scandic.com

www.szabo-scandic.com

[linkedin.com/company/szaboscandic](https://www.linkedin.com/company/szaboscandic) 



UK Office

Everest Biotech Ltd

Cherwell Innovation Centre
77 Heyford Park
Upper Heyford
Oxfordshire
OX25 5HD
UK

Enquiries:

info@everestbiotech.com

Sales:

sales@everestbiotech.com

Tech support:

support@everestbiotech.com

Tel: +44 (0)1869 238326

Fax: +44 (0)1869 238327

US Office

Everest Biotech c/o Abcore

405 Maple Street, Suite A106
Ramona,
CA 92065
USA

Inquiries:

info@everestbiotech.com

Sales:

usasales@everestbiotech.com

Tech support:

support@everestbiotech.com

Tel: 888-320-4628 (toll-free)

Fax: 888-841-9041

www.everestbiotech.com

**Research Use Only. Not for
diagnostic or therapeutic use.**

EB07847 - Goat Anti-IKZF1 / IKAROS Antibody

Size: 100µg specific antibody in 200µl



Target Protein

Principal Names: IKZF1, IKAROS family zinc finger 1 (Ikaros), Hs.54452, IK1, IKAROS, LYF1, PRO0758, ZNFN1A1, hlk-1, CLL-associated antigen KW-6, Ikaros (zinc finger protein), zinc finger protein, subfamily 1A, 1 (Ikaros)

Official Symbol: IKZF1

Accession Number(s): NP_006051.1; NP_001207694.1; NP_001207695.1; NP_001207696.1; NP_001207697.1; NP_001207698.1; NP_001207699.1; NP_001207700.1 and more

Human GeneID(s): [10320](#)

Non-Human GeneID(s): 22778 (mouse)

Important Comments: This antibody is expected to recognise all reported human isoforms.

Immunogen

Peptide with sequence C-DLLRAASENSQDALR, from the internal region of the protein sequence according to NP_006051.1; NP_001207694.1; NP_001207695.1; NP_001207696.1; NP_001207697.1; NP_001207698.1; NP_001207699.1; NP_001207700.1 and more.

Please note the [peptide](#) is available for sale.

Purification and Storage

Purified from goat serum by ammonium sulphate precipitation followed by antigen affinity chromatography using the immunizing peptide.

Supplied at 0.5 mg/ml in Tris saline, 0.02% sodium azide, pH7.3 with 0.5% bovine serum albumin.

Aliquot and store at -20°C. Minimize freezing and thawing.

Applications Tested

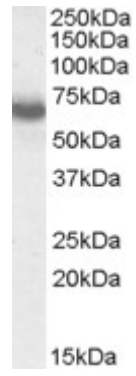
Peptide ELISA: antibody detection limit dilution 1:32000.

Western blot: Approx 65kDa band observed in lysates of cell line MOLT4 (calculated MW of 57.5kDa according to NP_006051.1). Recommended concentration: 0.01-0.03µg/ml.

Species Reactivity

Tested: Human

Expected from sequence similarity: Human, Mouse, Rat, Dog, Pig, Cow



EB07847 (0.03 μ g/ml) staining of MOLT4 lysate (35 μ g protein in RIPA buffer). Primary incubation was 1 hour. Detected by chemiluminescence.