



SZABO SCANDIC

Part of Europa Biosite

Produktinformation



Forschungsprodukte & Biochemikalien



Zellkultur & Verbrauchsmaterial



Diagnostik & molekulare Diagnostik



Laborgeräte & Service

Weitere Information auf den folgenden Seiten!
See the following pages for more information!



Lieferung & Zahlungsart

siehe unsere [Liefer- und Versandbedingungen](#)

Zuschläge

- Mindermengenzuschlag
- Trockeneiszuschlag
- Gefahrgutzuschlag
- Expressversand

SZABO-SCANDIC HandelsgmbH

Quellenstraße 110, A-1100 Wien

T. +43(0)1 489 3961-0

F. +43(0)1 489 3961-7

mail@szabo-scandic.com

www.szabo-scandic.com

[linkedin.com/company/szaboscandic](https://www.linkedin.com/company/szaboscandic) 



UK Office

Everest Biotech Ltd

Cherwell Innovation Centre
77 Heyford Park
Upper Heyford
Oxfordshire
OX25 5HD
UK

Enquiries:

info@everestbiotech.com

Sales:

sales@everestbiotech.com

Tech support:

support@everestbiotech.com

Tel: +44 (0)1869 238326

Fax: +44 (0)1869 238327

US Office

Everest Biotech c/o Abcore

405 Maple Street, Suite A106
Ramona,
CA 92065
USA

Inquiries:

info@everestbiotech.com

Sales:

usasales@everestbiotech.com

Tech support:

support@everestbiotech.com

Tel: 888-320-4628 (toll-free)

Fax: 888-841-9041

www.everestbiotech.com

**Research Use Only. Not for
diagnostic or therapeutic use.**

EB07862 - Goat Anti-IL12B / IL12p40 Antibody

Size: 100µg specific antibody in 200µl



Target Protein

Principal Names: IL12B, interleukin 12B (natural killer cell stimulatory factor 2, cytotoxic lymphocyte maturation factor 2, p40), CLMF, CLMF2, IL-12B, NKSF, NKSF2, IL12, subunit p40, cytotoxic lymphocyte maturation factor 2, p40, interleukin 12, p40, interleukin 12B, interleukin-12 beta chain, natural killer cell stimulatory factor, 40 kD subunit, natural killer cell stimulatory factor-2

Official Symbol: IL12B

Accession Number(s): NP_002178.2

Human GeneID(s): [3593](#)

Immunogen

Peptide with sequence C-QGKSKREKKDRVFTD, from the internal region of the protein sequence according to NP_002178.2.

Please note the [peptide](#) is available for sale.

Purification and Storage

Purified from goat serum by ammonium sulphate precipitation followed by antigen affinity chromatography using the immunizing peptide.

Supplied at 0.5 mg/ml in Tris saline, 0.02% sodium azide, pH7.3 with 0.5% bovine serum albumin.

Aliquot and store at -20°C. Minimize freezing and thawing.

Applications Tested

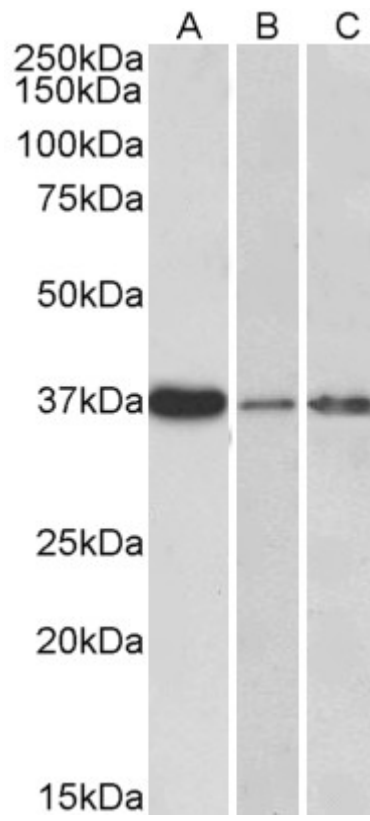
Peptide ELISA: antibody detection limit dilution 1:128000.

Western blot: Approx 37kDa band observed in Human Liver, Skin and Tonsil lysates (calculated MW of 37.2kDa according to NP_002178.2). Recommended concentration: 0.3-1µg/ml. Primary incubation was 1 hour.

Species Reactivity

Tested: Human

Expected from sequence similarity: Human



EB07862 (0.3 μ g/ml) staining of Human Liver (A), Skin (B) and Tonsil (C) lysate (35 μ g protein in RIPA buffer).
Detected by chemiluminescence.