



SZABO SCANDIC

Part of Europa Biosite

Produktinformation



Forschungsprodukte & Biochemikalien



Zellkultur & Verbrauchsmaterial



Diagnostik & molekulare Diagnostik



Laborgeräte & Service

Weitere Information auf den folgenden Seiten!
See the following pages for more information!



Lieferung & Zahlungsart

siehe unsere [Liefer- und Versandbedingungen](#)

Zuschläge

- Mindermengenzuschlag
- Trockeneiszuschlag
- Gefahrgutzuschlag
- Expressversand

SZABO-SCANDIC HandelsgmbH

Quellenstraße 110, A-1100 Wien

T. +43(0)1 489 3961-0

F. +43(0)1 489 3961-7

mail@szabo-scandic.com

www.szabo-scandic.com

[linkedin.com/company/szaboscandic](https://www.linkedin.com/company/szaboscandic) 



UK Office

Everest Biotech Ltd

Cherwell Innovation Centre
77 Heyford Park
Upper Heyford
Oxfordshire
OX25 5HD
UK

Enquiries:

info@everestbiotech.com

Sales:

sales@everestbiotech.com

Tech support:

support@everestbiotech.com

Tel: +44 (0)1869 238326

Fax: +44 (0)1869 238327

US Office

Everest Biotech c/o Abcore

405 Maple Street, Suite A106
Ramona,
CA 92065
USA

Inquiries:

info@everestbiotech.com

Sales:

usasales@everestbiotech.com

Tech support:

support@everestbiotech.com

Tel: 888-320-4628 (toll-free)

Fax: 888-841-9041

www.everestbiotech.com

**Research Use Only. Not for
diagnostic or therapeutic use.**

EB07893 - Goat Anti-ATG16L1 Antibody

Size: 100µg specific antibody in 200µl



Target Protein

Principal Names: ATG16, autophagy related 16-like 1 (*S. cerevisiae*), hCG_1817841, APG16L, ATG16L, FLJ00045, FLJ10035, FLJ10828, FLJ22677, WDR30, APG16 autophagy 16-like, APG16L beta, ATG16 autophagy related 16-like protein 1, WD repeat domain 30

Official Symbol: ATG16L1

Accession Number(s): NP_110430.5; NP_060444.3

Human GeneID(s): [55054](#)

Important Comments: This antibody is expected to recognise both reported isoforms (NP_110430.5 and NP_060444.3).

Immunogen

Peptide with sequence C-KVEKVLSKQHSSSIN, from the internal region (near the C Terminus) of the protein sequence according to NP_110430.5; NP_060444.3.

Please note the [peptide](#) is available for sale.

Purification and Storage

Purified from goat serum by ammonium sulphate precipitation followed by antigen affinity chromatography using the immunizing peptide.

Supplied at 0.5 mg/ml in Tris saline, 0.02% sodium azide, pH7.3 with 0.5% bovine serum albumin.

Aliquot and store at -20°C. Minimize freezing and thawing.

Applications Tested

Peptide ELISA: antibody detection limit dilution 1:32000.

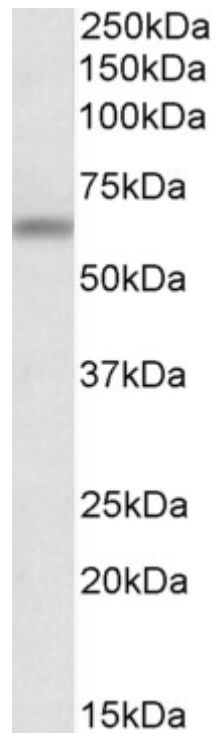
Western blot: Approx 65kDa band observed in Mouse Brain lysates (calculated MW of 68.1kDa according to Mouse NP_084122.2). Recommended concentration: 0.01-0.1µg/ml. Primary incubation was 1 hour.

IHC: Paraffin embedded Human Skin. Recommended concentration: 3.75µg/ml.

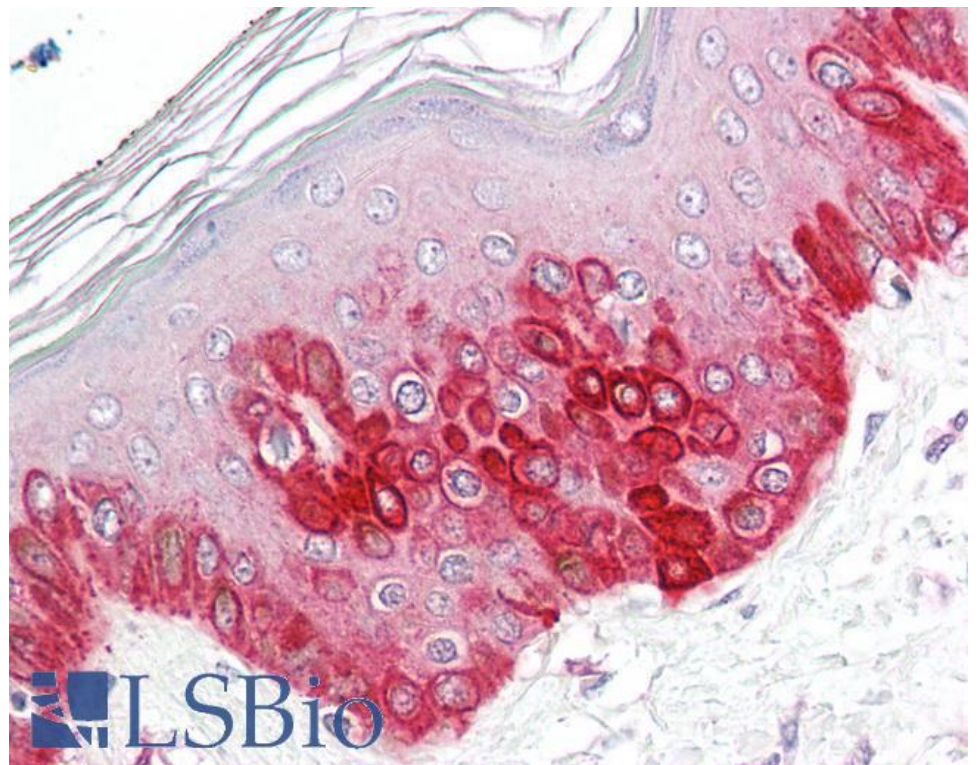
Species Reactivity

Tested: Mouse, Human

Expected from sequence similarity: Human, Mouse, Rat, Dog



EB07893 (0.1 μ g/ml) staining of Mouse Brain lysate (35 μ g protein in RIPA buffer). Detected by chemiluminescence.



EB07893 (3.75 μ g/ml) staining of paraffin embedded Human Skin. Steamed antigen retrieval with citrate buffer pH 6, AP-staining.