



# SZABO SCANDIC

Part of Europa Biosite

## Produktinformation



Forschungsprodukte & Biochemikalien



Zellkultur & Verbrauchsmaterial



Diagnostik & molekulare Diagnostik



Laborgeräte & Service

Weitere Information auf den folgenden Seiten!  
See the following pages for more information!



### Lieferung & Zahlungsart

siehe unsere [Liefer- und Versandbedingungen](#)

### Zuschläge

- Mindermengenzuschlag
- Trockeneiszuschlag
- Gefahrgutzuschlag
- Expressversand

### SZABO-SCANDIC HandelsgmbH

Quellenstraße 110, A-1100 Wien

T. +43(0)1 489 3961-0

F. +43(0)1 489 3961-7

[mail@szabo-scandic.com](mailto:mail@szabo-scandic.com)

[www.szabo-scandic.com](http://www.szabo-scandic.com)

[linkedin.com/company/szaboscandic](https://www.linkedin.com/company/szaboscandic) 



## UK Office

### Everest Biotech Ltd

Cherwell Innovation Centre  
77 Heyford Park  
Upper Heyford  
Oxfordshire  
OX25 5HD  
UK

Enquiries:

[info@everestbiotech.com](mailto:info@everestbiotech.com)

Sales:

[sales@everestbiotech.com](mailto:sales@everestbiotech.com)

Tech support:

[support@everestbiotech.com](mailto:support@everestbiotech.com)

Tel: +44 (0)1869 238326

Fax: +44 (0)1869 238327

## US Office

### Everest Biotech c/o Abcore

405 Maple Street, Suite A106  
Ramona,  
CA 92065  
USA

Inquiries:

[info@everestbiotech.com](mailto:info@everestbiotech.com)

Sales:

[usasales@everestbiotech.com](mailto:usasales@everestbiotech.com)

Tech support:

[support@everestbiotech.com](mailto:support@everestbiotech.com)

Tel: 888-320-4628 (toll-free)

Fax: 888-841-9041

[www.everestbiotech.com](http://www.everestbiotech.com)

**Research Use Only. Not for  
diagnostic or therapeutic use.**

## EB07898 - Goat Anti-Insulysin / Insulinase Antibody

Size: 100µg specific antibody in 200µl



### Target Protein

**Principal Names:** insulinase, insulysin, insulin-degrading enzyme, FLJ35968, INSULYSIN, IDE

**Official Symbol:** IDE

**Accession Number(s):** NP\_004960.2; NP\_001159418.1; NP\_001309722.1;  
NP\_001309723.1; NP\_001309724.1; NP\_001309726.1

**Human GeneID(s):** [3416](#)

**Important Comments:** This antibody is expected to recognize all reported isoforms (NP\_004960.2; NP\_001159418.1; NP\_001309722.1; NP\_001309723.1; NP\_001309724.1; NP\_001309726.1). Reported variants represent identical protein: NP\_001309725.1, NP\_001309724.1

### Immunogen

Peptide with sequence C-QQYNFDRDNTTE, from the internal region of the protein sequence according to NP\_004960.2; NP\_001159418.1; NP\_001309722.1; NP\_001309723.1; NP\_001309724.1; NP\_001309726.1.

Please note the [peptide](#) is available for sale.

### Purification and Storage

Purified from goat serum by ammonium sulphate precipitation followed by antigen affinity chromatography using the immunizing peptide.

Supplied at 0.5 mg/ml in Tris saline, 0.02% sodium azide, pH7.3 with 0.5% bovine serum albumin.

Aliquot and store at -20°C. Minimize freezing and thawing.

### Applications Tested

**Peptide ELISA:** antibody detection limit dilution 1:32000.

**Western blot:** Approx 110-120kDa band observed in lysates of cell line K562 (calculated MW of 118kDa according to NP\_004960.1). Recommended concentration: 0.1-0.3µg/ml. Primary incubation was 1 hour.

**IHC:** Paraffin embedded Human Lung and Breast. Recommended concentration: 2.5µg/ml.

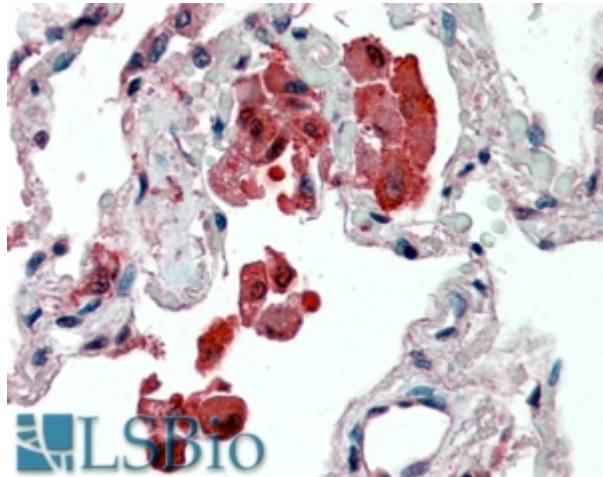
### Species Reactivity

**Tested:** Human

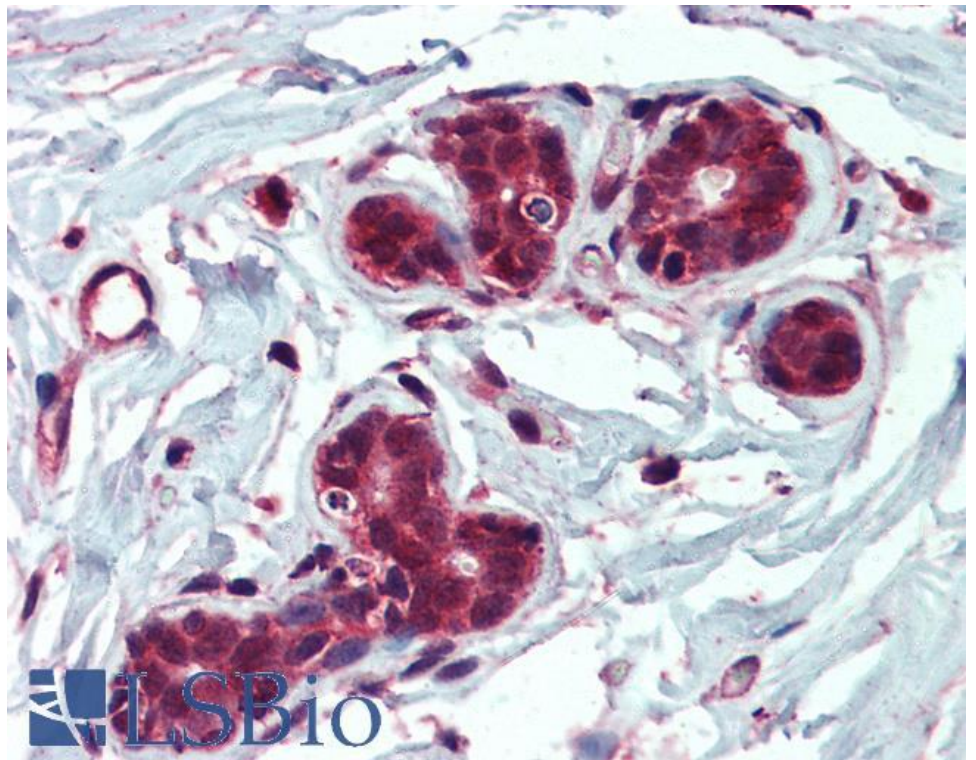
**Expected from sequence similarity:** Human, Dog

250kDa  
150kDa  
100kDa  
75kDa  
50kDa  
37kDa  
  
25kDa  
20kDa  
  
15kDa

EB07898 (0.1µg/ml) staining of K562 cell lysate (35µg protein in RIPA buffer). Detected by chemiluminescence.



EB07898 (2.5µg/ml) staining of paraffin embedded Human Lung. Steamed antigen retrieval with citrate buffer pH 6, AP-staining.



EB07898 (2.5µg/ml) staining of paraffin embedded Human Breast. Steamed antigen retrieval with citrate buffer pH 6, AP-staining.