



SZABO SCANDIC

Part of Europa Biosite

Produktinformation



Forschungsprodukte & Biochemikalien



Zellkultur & Verbrauchsmaterial



Diagnostik & molekulare Diagnostik



Laborgeräte & Service

Weitere Information auf den folgenden Seiten!
See the following pages for more information!



Lieferung & Zahlungsart

siehe unsere [Liefer- und Versandbedingungen](#)

Zuschläge

- Mindermengenzuschlag
- Trockeneiszuschlag
- Gefahrgutzuschlag
- Expressversand

SZABO-SCANDIC HandelsgmbH

Quellenstraße 110, A-1100 Wien

T. +43(0)1 489 3961-0

F. +43(0)1 489 3961-7

mail@szabo-scandic.com

www.szabo-scandic.com

[linkedin.com/company/szaboscandic](https://www.linkedin.com/company/szaboscandic) 



UK Office

Everest Biotech Ltd

Cherwell Innovation Centre
77 Heyford Park
Upper Heyford
Oxfordshire
OX25 5HD
UK

Enquiries:

info@everestbiotech.com

Sales:

sales@everestbiotech.com

Tech support:

support@everestbiotech.com

Tel: +44 (0)1869 238326

Fax: +44 (0)1869 238327

US Office

Everest Biotech c/o Abcore

405 Maple Street, Suite A106
Ramona,
CA 92065
USA

Inquiries:

info@everestbiotech.com

Sales:

usasales@everestbiotech.com

Tech support:

support@everestbiotech.com

Tel: 888-320-4628 (toll-free)

Fax: 888-841-9041

www.everestbiotech.com

**Research Use Only. Not for
diagnostic or therapeutic use.**

EB07922 - Goat Anti-Trem2 (mouse) Antibody

Size: 100µg specific antibody in 200µl



Target Protein

Principal Names: Trem2, triggering receptor expressed on myeloid cells 2, Trem2a, Trem2b, Trem2c, triggering receptor expressed on myeloid cells 2a, triggering receptor expressed on myeloid cells 2b, triggering receptor expressed on myeloid cells 2c

Official Symbol: Trem2

Accession Number(s): NP_112544.1

Non-Human GeneID(s): 83433 (mouse), 301227 (rat)

Immunogen

Peptide with sequence C-QVEHSTSRNQET, from the internal region of the protein sequence according to NP_112544.1.

Please note the [peptide](#) is available for sale.

Purification and Storage

Purified from goat serum by ammonium sulphate precipitation followed by antigen affinity chromatography using the immunizing peptide.

Supplied at 0.5 mg/ml in Tris saline, 0.02% sodium azide, pH7.3 with 0.5% bovine serum albumin.

Aliquot and store at -20°C. Minimize freezing and thawing.

Applications Tested

Peptide ELISA: antibody detection limit dilution 1:32000.

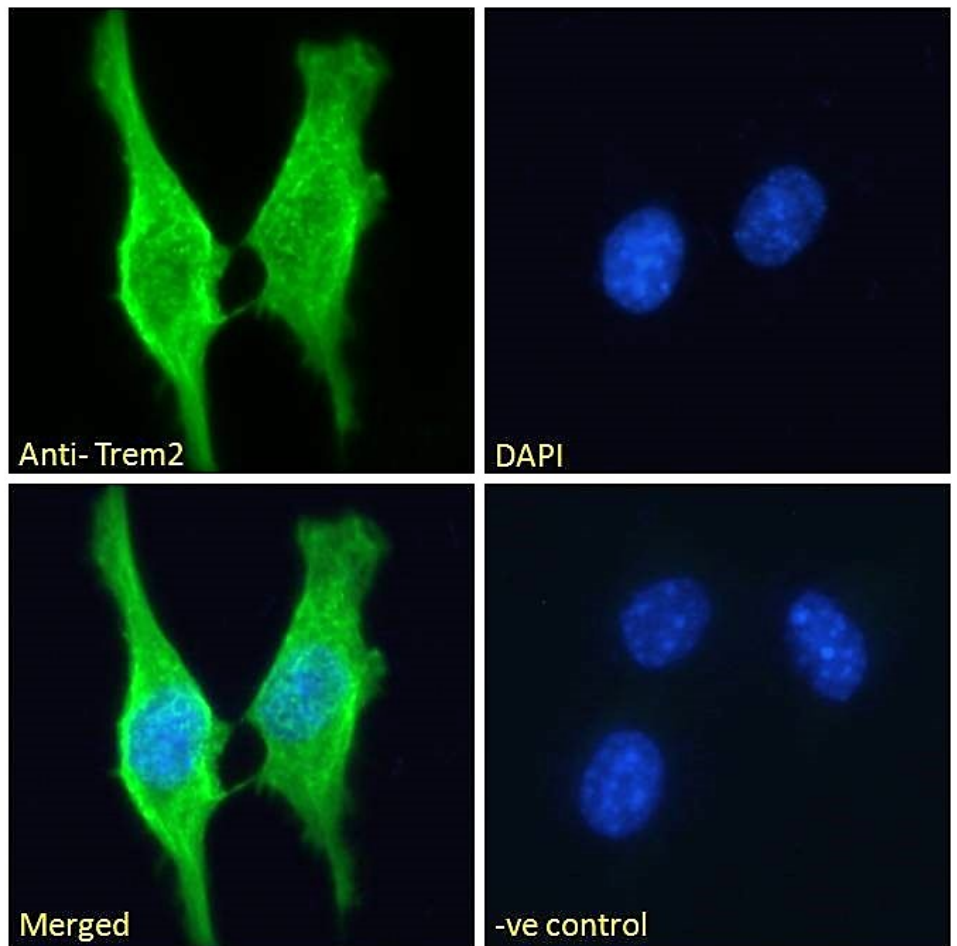
Western blot: Preliminary experiments showed a band at approx 26kDa in Mouse Adrenal gland lysates after 1µg/ml antibody staining (calculated MW of 24.5kDa according to Mouse NP_112544.1 and 24.9 according to Rat NP_001100354.1). Primary incubation 1 hour at room temperature.

Immunofluorescence: Strong expression of the protein seen in the plasma membranes/ cytoplasm of NIH3T3-L1 (adipocyte like) cells and Raw264.7 cells. Recommended concentration: 10µg/ml.

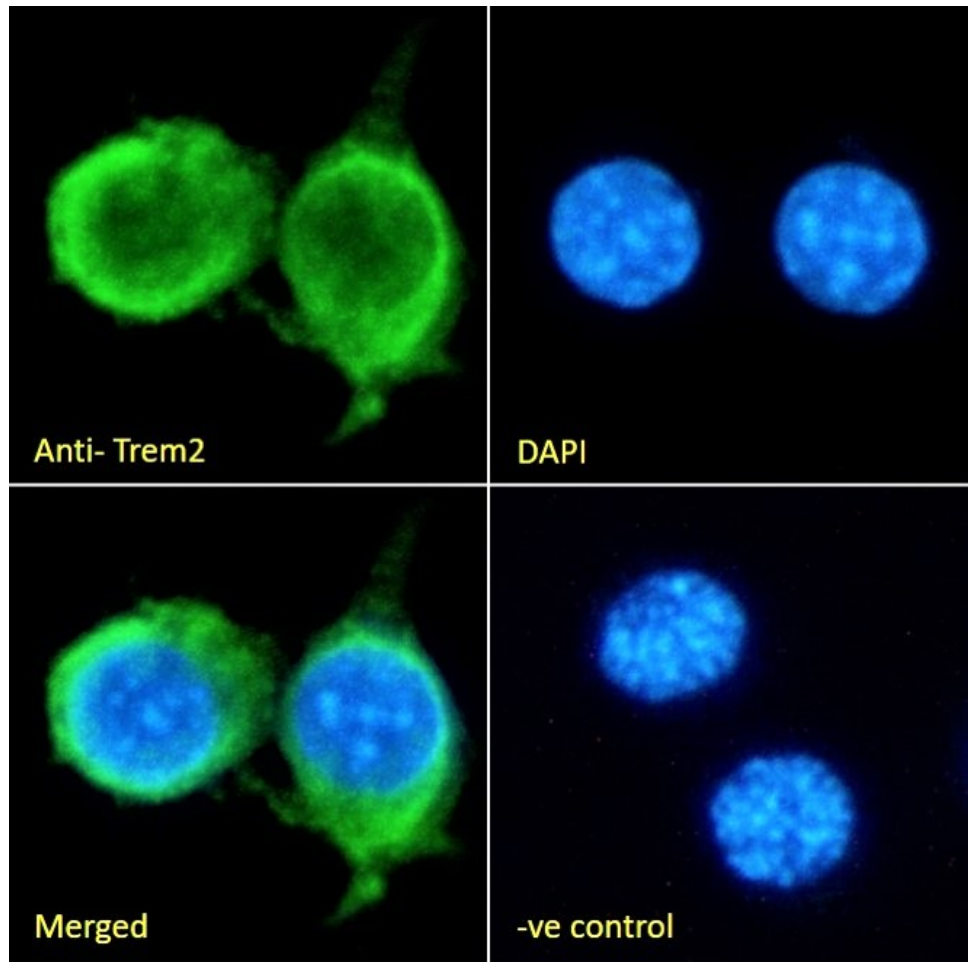
Species Reactivity

Tested: Mouse

Expected from sequence similarity: Mouse



EB07922 Immunofluorescence analysis of paraformaldehyde fixed 3T3-L1 cells, permeabilized with 0.15% Triton. Primary incubation 1hr (10ug/ml) followed by Alexa Fluor 488 secondary antibody (2ug/ml), showing membrane/cytoplasmic staining. The nuclear stain is DAPI (blue). Negative control: Unimmunized goat IgG (10ug/ml) followed by Alexa Fluor 488 secondary antibody (2ug/ml).



EB07922 Immunofluorescence analysis of paraformaldehyde fixed RAW264.7 cells, permeabilized with 0.15% Triton. Primary incubation 1hr (10ug/ml) followed by Alexa Fluor 488 secondary antibody (2ug/ml), showing membrane and cytoplasmic staining. The nuclear stain is DAPI (blue). Negative control: Unimmunized goat IgG (10ug/ml) followed by Alexa Fluor 488 secondary antibody (2ug/ml).