



SZABO SCANDIC

Part of Europa Biosite

Produktinformation



Forschungsprodukte & Biochemikalien



Zellkultur & Verbrauchsmaterial



Diagnostik & molekulare Diagnostik



Laborgeräte & Service

Weitere Information auf den folgenden Seiten!
See the following pages for more information!



Lieferung & Zahlungsart

siehe unsere [Liefer- und Versandbedingungen](#)

Zuschläge

- Mindermengenzuschlag
- Trockeneiszuschlag
- Gefahrgutzuschlag
- Expressversand

SZABO-SCANDIC HandelsgmbH

Quellenstraße 110, A-1100 Wien

T. +43(0)1 489 3961-0

F. +43(0)1 489 3961-7

mail@szabo-scandic.com

www.szabo-scandic.com

[linkedin.com/company/szaboscandic](https://www.linkedin.com/company/szaboscandic) 

UK Office

Everest Biotech Ltd

Cherwell Innovation Centre
77 Heyford Park
Upper Heyford
Oxfordshire
OX25 5HD
UK

Enquiries:

info@everestbiotech.com

Sales:

sales@everestbiotech.com

Tech support:

support@everestbiotech.com

Tel: +44 (0)1869 238326

Fax: +44 (0)1869 238327

US Office

Everest Biotech c/o Abcore

405 Maple Street, Suite A106
Ramona,
CA 92065
USA

Inquiries:

info@everestbiotech.com

Sales:

usasales@everestbiotech.com

Tech support:

support@everestbiotech.com

Tel: 888-320-4628 (toll-free)

Fax: 888-841-9041

www.everestbiotech.com

**Research Use Only. Not for
diagnostic or therapeutic use.**

EB07977 - Goat Anti-LDHC (aa 217 - 231) Antibody

Size: 100µg specific antibody in 200µl



Target Protein

Principal Names: LDHC, MGC111073, lactate dehydrogenase C, LDH3, LDHX

Official Symbol: LDHC

Accession Number(s): NP_002292.1; NP_059144.1

Human GeneID(s): [3948](#)

Non-Human GeneID(s): 16833 (mouse)

Important Comments: Both variants represent identical product (NP_002292.1 and NP_059144.1).

Immunogen

Peptide with sequence C-KLGTDSKKEHWKNIH, from the Internal region of the protein sequence according to NP_002292.1; NP_059144.1.

Please note the [peptide](#) is available for sale.

Purification and Storage

Purified from goat serum by ammonium sulphate precipitation followed by antigen affinity chromatography using the immunizing peptide.

Supplied at 0.5 mg/ml in Tris saline, 0.02% sodium azide, pH7.3 with 0.5% bovine serum albumin.

Aliquot and store at -20°C. Minimize freezing and thawing.

Applications Tested

Peptide ELISA: antibody detection limit dilution 1:16000.

Western blot: Approx 30-35kDa band observed in Mouse Testis lysates (calculated MW of 36.6kDa according to human NP_002292.1 and 35.9kDa according to mouse NP_038608.1). Recommended concentration: 0.03-0.1µg/ml. This antibody has been successfully used in WB on Mouse, PMID: 36464740.

IHC: In paraffin embedded Mouse Testis shows strong signal in seminiferous tubules of Mouse Testis. Recommended concentration, 1-2µg/ml. This antibody has been successfully used in IHC on Mouse, PMID: 36464740.

Species Reactivity

Tested: Mouse

Expected from sequence similarity: Human, Mouse

Specific Reference

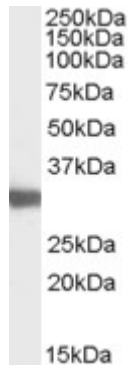
This antibody has been successfully used in WB and IHC on Mouse:

Rie Iida-Norita, Haruhiko Miyata, Yuki Kaneda, Chihiro Emori, Taichi Noda, Tatsuya Nakagawa, Martin M Matzuk, Masahito Ikawa

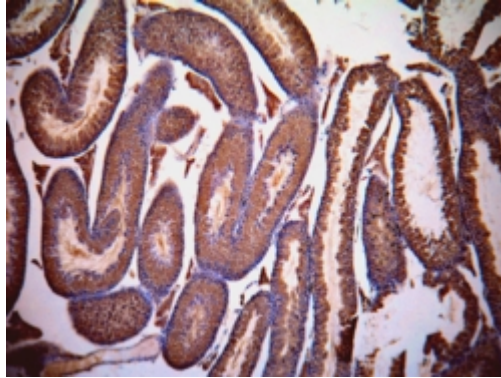
Generation of humanized LDHC knock-in mice as a tool to assess human LDHC-targeting contraceptive drugs.

Andrology. 2023 Jul;11(5):840-848.

PMID: 36464740



EB07977 (0.03 μ g/ml) staining of Mouse Testis lysate (35 μ g protein in RIPA buffer). Primary incubation was 1 hour. Detected by chemiluminescence.



EB07977 (1 μ g/ml) staining of paraffin embedded Mouse Testis. Data kindly provided by Dr. Erwin Goldberg, Northwestern University, Evanston, IL USA.