



SZABO SCANDIC

Part of Europa Biosite

Produktinformation



Forschungsprodukte & Biochemikalien



Zellkultur & Verbrauchsmaterial



Diagnostik & molekulare Diagnostik



Laborgeräte & Service

Weitere Information auf den folgenden Seiten!
See the following pages for more information!



Lieferung & Zahlungsart

siehe unsere [Liefer- und Versandbedingungen](#)

Zuschläge

- Mindermengenzuschlag
- Trockeneiszuschlag
- Gefahrgutzuschlag
- Expressversand

SZABO-SCANDIC HandelsgmbH

Quellenstraße 110, A-1100 Wien

T. +43(0)1 489 3961-0

F. +43(0)1 489 3961-7

mail@szabo-scandic.com

www.szabo-scandic.com

[linkedin.com/company/szaboscandic](https://www.linkedin.com/company/szaboscandic) 



UK Office

Everest Biotech Ltd

Cherwell Innovation Centre
77 Heyford Park
Upper Heyford
Oxfordshire
OX25 5HD
UK

Enquiries:

info@everestbiotech.com

Sales:

sales@everestbiotech.com

Tech support:

support@everestbiotech.com

Tel: +44 (0)1869 238326

Fax: +44 (0)1869 238327

US Office

Everest Biotech c/o Abcore

405 Maple Street, Suite A106
Ramona,
CA 92065
USA

Inquiries:

info@everestbiotech.com

Sales:

usasales@everestbiotech.com

Tech support:

support@everestbiotech.com

Tel: 888-320-4628 (toll-free)

Fax: 888-841-9041

www.everestbiotech.com

**Research Use Only. Not for
diagnostic or therapeutic use.**

EB08000 - Goat Anti-GLuR5 / GRIK1 Antibody

Size: 100µg specific antibody in 200µl



Target Protein

Principal Names: GLUR5, GRIK1, glutamate receptor, ionotropic, kainate 1, EAA3, EEA3, GLR5, excitatory amino acid receptor 3

Official Symbol: GRIK1

Accession Number(s): NP_000821.1; NP_783300.1

Human GeneID(s): [2897](#)

Non-Human GeneID(s): 14805 (mouse), 29559 (rat)

Important Comments: This antibody is expected to recognise both reported isoforms according to NP_000821.1 and NP_783300.1.

Immunogen

Peptide with sequence QCKQTHPTNSTS, from the internal region (near the C Terminus) of the protein sequence according to NP_000821.1; NP_783300.1.

Please note the [peptide](#) is available for sale.

Purification and Storage

Purified from goat serum by ammonium sulphate precipitation followed by antigen affinity chromatography using the immunizing peptide.

Supplied at 0.5 mg/ml in Tris saline, 0.02% sodium azide, pH7.3 with 0.5% bovine serum albumin.

Aliquot and store at -20°C. Minimize freezing and thawing.

Applications Tested

Peptide ELISA: antibody detection limit dilution 1:8000.

Western blot: Approx 150kDa band observed in Human Brain (Cerebellum and Cerebral Cortex) lysates (calculated MW of 104kDa according to NP_000821.1). The observed molecular weight corresponds to earlier findings in literature with different antibodies (Christensen et al, J Neurosci. 2004 Oct 13;24(41):8986-93.; PMID: 15483117).

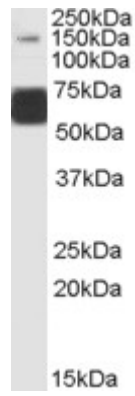
Recommended concentration: 1-3µg/ml. Primary incubation was 1 hour. An additional very strong band of unknown identity was also consistently observed at 60kDa. This band was successfully blocked by incubation with the immunising peptide.

IHC: Paraffin embedded Human Brain (Cortex). Recommended concentration: 3.75µg/ml.

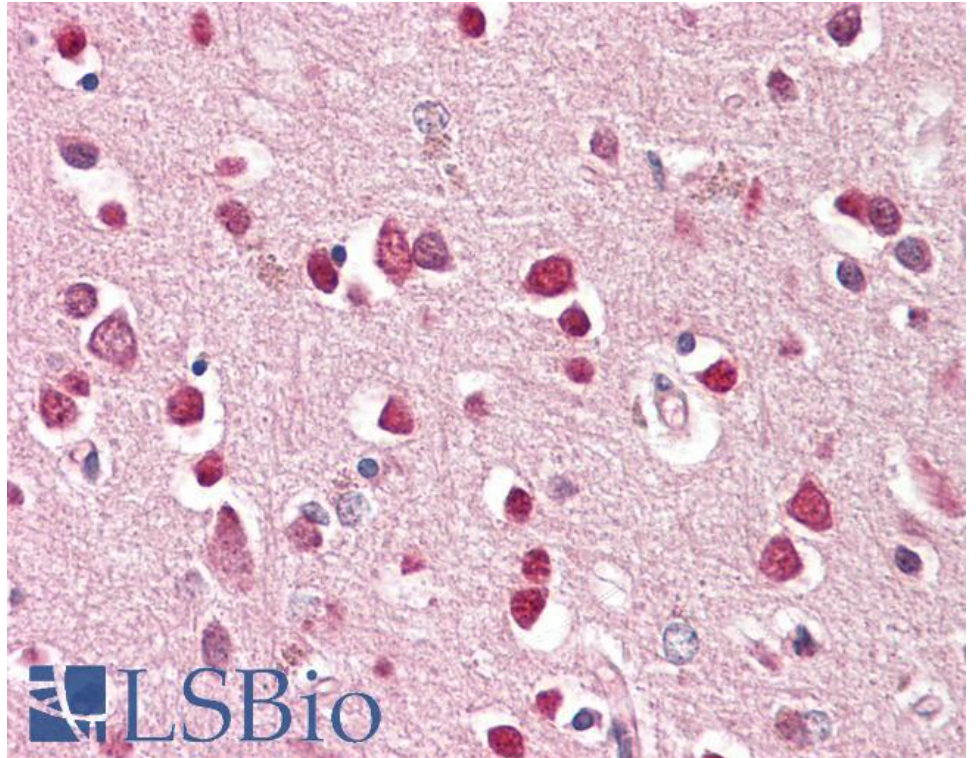
Species Reactivity

Tested: Human

Expected from sequence similarity: Human, Mouse, Rat



EB08000 (1µg/ml) staining of Human Brain (Cerebellum) lysate (35µg protein in RIPA buffer). Detected by chemiluminescence.



EB08000 (3.75µg/ml) staining of paraffin embedded Human Cortex. Steamed antigen retrieval with citrate buffer pH 6, AP-staining.