



SZABO SCANDIC

Part of Europa Biosite

Produktinformation



Forschungsprodukte & Biochemikalien



Zellkultur & Verbrauchsmaterial



Diagnostik & molekulare Diagnostik



Laborgeräte & Service

Weitere Information auf den folgenden Seiten!
See the following pages for more information!



Lieferung & Zahlungsart

siehe unsere [Liefer- und Versandbedingungen](#)

Zuschläge

- Mindermengenzuschlag
- Trockeneiszuschlag
- Gefahrgutzuschlag
- Expressversand

SZABO-SCANDIC HandelsgmbH

Quellenstraße 110, A-1100 Wien

T. +43(0)1 489 3961-0

F. +43(0)1 489 3961-7

mail@szabo-scandic.com

www.szabo-scandic.com

[linkedin.com/company/szaboscandic](https://www.linkedin.com/company/szaboscandic) 



EB08019 - Goat Anti-Vitamin D-binding protein / GC Antibody



Size: 100µg specific antibody in 200µl

UK Office

Everest Biotech Ltd

Cherwell Innovation Centre
77 Heyford Park
Upper Heyford
Oxfordshire
OX25 5HD
UK

Enquiries:

info@everestbiotech.com

Sales:

sales@everestbiotech.com

Tech support:

support@everestbiotech.com

Tel: +44 (0)1869 238326

Fax: +44 (0)1869 238327

US Office

Everest Biotech c/o Abcore

405 Maple Street, Suite A106
Ramona,
CA 92065
USA

Inquiries:

info@everestbiotech.com

Sales:

usasales@everestbiotech.com

Tech support:

support@everestbiotech.com

Tel: 888-320-4628 (toll-free)

Fax: 888-841-9041

www.everestbiotech.com

Research Use Only. Not for diagnostic or therapeutic use.

Target Protein

Principal Names: GC, vitamin D-binding protein, group-specific component (vitamin D binding protein), DBP, DBP/GC, VDBG, VDBP, vitamin D binding protein, vitamin D-binding alpha-globulin, vitamin D-binding protein/group specific component

Official Symbol: GC

Accession Number(s): NP_000574.2

Human GeneID(s): [2638](#)

Immunogen

Peptide with sequence CDNLSTKNSKFED, from the internal region of the protein sequence according to NP_000574.2.

Please note the [peptide](#) is available for sale.

Purification and Storage

Purified from goat serum by ammonium sulphate precipitation followed by antigen affinity chromatography using the immunizing peptide.

Supplied at 0.5 mg/ml in Tris saline, 0.02% sodium azide, pH7.3 with 0.5% bovine serum albumin.

Aliquot and store at -20°C. Minimize freezing and thawing.

Applications Tested

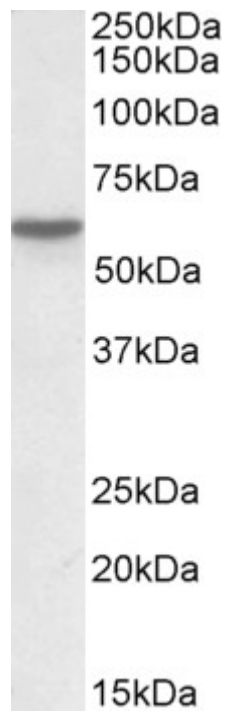
Peptide ELISA: antibody detection limit dilution 1:2000.

Western blot: Approx 56kDa band observed in Human Lung lysates (calculated MW of 52.9kDa according to NP_000574.2). The observed molecular weight corresponds to earlier findings in literature with different antibodies (DiMartino and Kew, J Immunol. 1999 Aug 15;163(4):2135-42; PMID: 10438954). Recommended concentration: 0.1-0.3µg/ml.

Species Reactivity

Tested: Human

Expected from sequence similarity: Human



EB08019 (0.03 μ g/ml) staining of Human Lung lysate (35 μ g protein in RIPA buffer). Primary incubation was 1 hour. Detected by chemiluminescence.