



SZABO SCANDIC

Part of Europa Biosite

Produktinformation



Forschungsprodukte & Biochemikalien



Zellkultur & Verbrauchsmaterial



Diagnostik & molekulare Diagnostik



Laborgeräte & Service

Weitere Information auf den folgenden Seiten!
See the following pages for more information!



Lieferung & Zahlungsart

siehe unsere [Liefer- und Versandbedingungen](#)

Zuschläge

- Mindermengenzuschlag
- Trockeneiszuschlag
- Gefahrgutzuschlag
- Expressversand

SZABO-SCANDIC HandelsgmbH

Quellenstraße 110, A-1100 Wien

T. +43(0)1 489 3961-0

F. +43(0)1 489 3961-7

mail@szabo-scandic.com

www.szabo-scandic.com

[linkedin.com/company/szaboscandic](https://www.linkedin.com/company/szaboscandic) 



UK Office

Everest Biotech Ltd

Cherwell Innovation Centre
77 Heyford Park
Upper Heyford
Oxfordshire
OX25 5HD
UK

Enquiries:

info@everestbiotech.com

Sales:

sales@everestbiotech.com

Tech support:

support@everestbiotech.com

Tel: +44 (0)1869 238326

Fax: +44 (0)1869 238327

US Office

Everest Biotech c/o Abcore

405 Maple Street, Suite A106
Ramona,
CA 92065
USA

Inquiries:

info@everestbiotech.com

Sales:

usasales@everestbiotech.com

Tech support:

support@everestbiotech.com

Tel: 888-320-4628 (toll-free)

Fax: 888-841-9041

www.everestbiotech.com

**Research Use Only. Not for
diagnostic or therapeutic use.**

EB08035 - Goat Anti-CRHR1 / CRF-R (aa 107 - 117) Antibody

Size: 100µg specific antibody in 200µl



Target Protein

Principal Names: CRHR1, CRF-R, corticotropin releasing hormone receptor 1, CRF1, CRFR1, CRH-R1h, CRHR, CRHR1f, corticotropin releasing hormone receptor variant 1h, seven transmembrane helix receptor

Official Symbol: CRHR1

Accession Number(s): NP_004373.2

Human GeneID(s): [1394](#)

Non-Human GeneID(s): 12921 (mouse), 58959 (rat)

Immunogen

Peptide with sequence C-NEEKKSKVHYH, from the internal region of the protein sequence according to NP_004373.2.

Please note the [peptide](#) is available for sale.

Purification and Storage

Purified from goat serum by ammonium sulphate precipitation followed by antigen affinity chromatography using the immunizing peptide.

Supplied at 0.5 mg/ml in Tris saline, 0.02% sodium azide, pH7.3 with 0.5% bovine serum albumin.

Aliquot and store at -20°C. Minimize freezing and thawing.

Applications Tested

Peptide ELISA: antibody detection limit dilution 1:128000.

Western blot: Approx 60kDa band observed in Human Brain (Cerebellum), Colon, Rat Brain and Mouse spinal cord lysates (calculated MW of 47.7kDa according to NP_004373.2). The observed molecular weight corresponds to earlier findings in literature with different antibodies (Xu et al, Mol Pharmacol. 2001 Mar;59(3):485-92; PMID: 11179443) . Recommended concentration: 0.1-0.3µg/ml. Primary incubation was 1 hour.

Immunofluorescence: Expression of the protein seen in the membranes, vesicles and cytoplasm of MCF7 and Neuro2a cells. Recommended concentration: 10µg/ml.

Species Reactivity

Tested: Human, Mouse, Rat

Expected from sequence similarity: Human, Mouse, Rat

Specific References

This antibody has been successfully used in ICC on Mouse:

Silvia Cursano, Chiara R. Battaglia, Carolina Urrutia-Ruiz, Stefanie Grabrucker, Michael Schön, Jürgen Bockmann, Sonja Braumüller, Peter Radermacher, Francesco Roselli, Markus Huber-Lang, and Tobias M. Boeckers

A CRHR1 antagonist prevents synaptic loss and memory deficits in a trauma-induced delirium-like syndrome.

Mol Psychiatry. 2021; 26(8): 3778-3794.

PMID: 32051550

This antibody has been successfully used in ICC on Rat:

Xie Z, Penzes P, Srivastava DP

Exchange protein directly activated by cAMP 2 is required for corticotropin-releasing hormone-mediated

Eur J Neurosci. 2019 Jun 14.

PMID: 31199033

This antibody has been successfully used in ICC/IF on Rat:

Zhong Xie, Peter Penzes, Deepak P. Srivastava

EPAC2 is required for corticotropin-releasing hormone-mediated spine loss

April 2019: doi: <https://doi.org/10.1101/607598>

PMID: 0

This antibody has been successfully used in Western blot on Mouse:

Baglietto-Vargas D, Chen Y, Suh D, Ager RR, Rodriguez-Ortiz CJ, Medeiros R, Myczek K, Green KN, Baram TZ, LaFerla FM.

Short-term modern life-like stress exacerbates A β -pathology and synapse loss in 3xTg-AD mice.

J Neurochem. 2015 Sep;134(5):915-26.

PMID: 26077803

This antibody has been successfully used in Western blot on Mouse:

Weerachayaphorn J, Mennone A, Soroka CJ, Harry K, Hagey LR, Kensler TW, Boyer JL.

Nuclear factor-E2-related factor 2 is a major determinant of bile acid homeostasis in the liver and intestine.

Am J Physiol Gastrointest Liver Physiol. 2012 May 1;302(9):G925-36.

PMID: 22345550

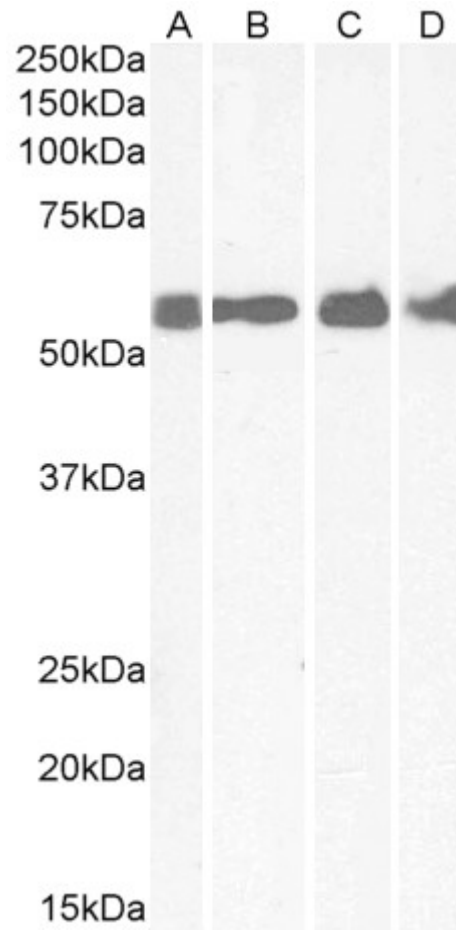
This antibody has been successfully used in IHC on Mouse:

Jüngling K, Liu X, Lesting J, Coulon P, Sosulina L, Reinscheid RK, Pape HC.

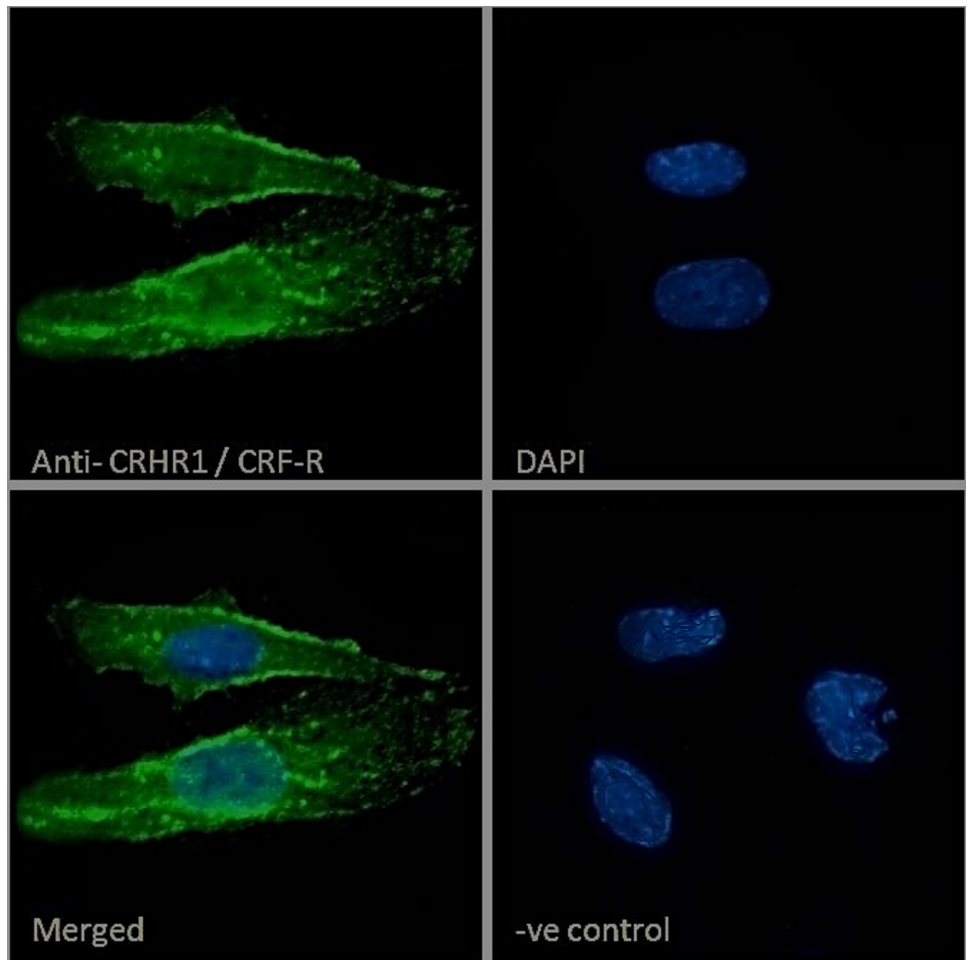
Activation of neuropeptide S expressing neurons in the locus coeruleus by corticotropin-releasing factor.

J Physiol. 2012 May 8.

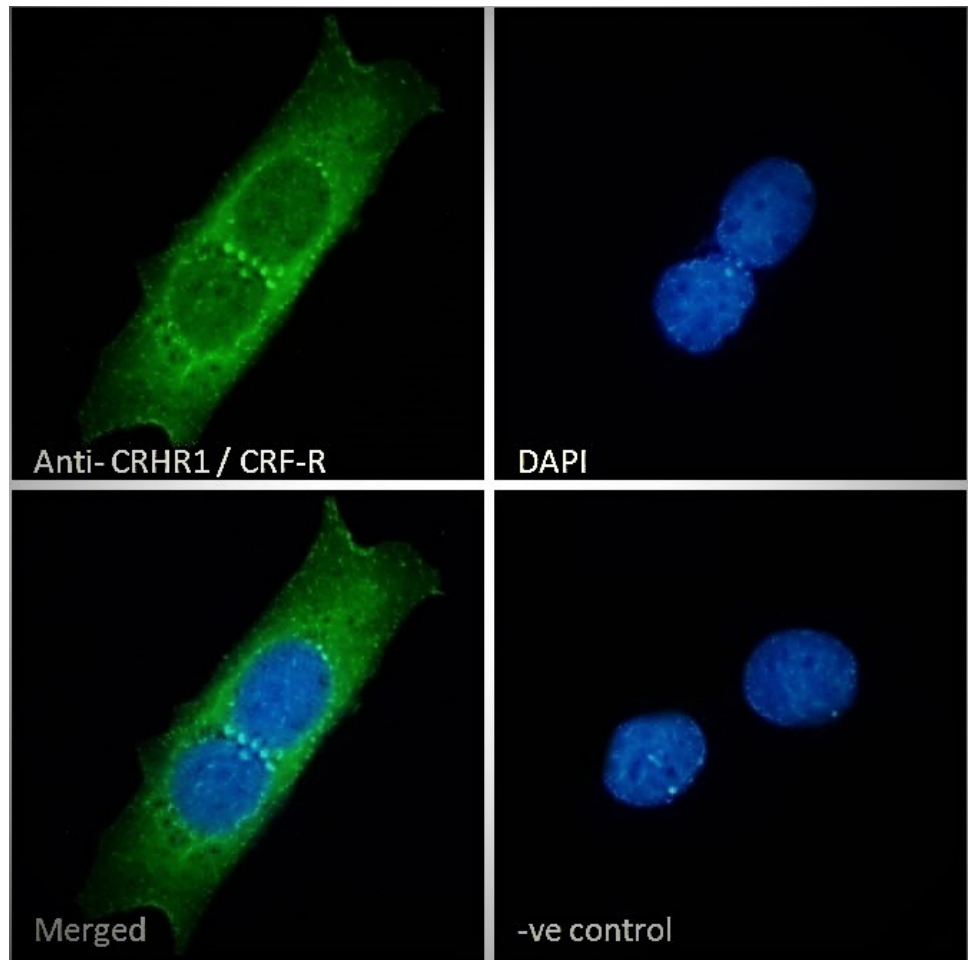
PMID: 22570383



EB08035 (1 μ g/ml) staining of Human Colon (A), Cerebellum (B), Rat Brain (C) and Mouse spinal Cord (D) lysates (35 μ g protein in RIPA buffer). Detected by chemiluminescence.



EB08035 Immunofluorescence analysis of paraformaldehyde fixed Neuro2a cells, permeabilized with 0.15% Triton. Primary incubation 1hr (10ug/ml) followed by Alexa Fluor 488 secondary antibody (2ug/ml), showing plasma membrane, and vesicle staining. The nuclear stain is DAPI (blue). Negative control: Unimmunized goat IgG (10ug/ml) followed by Alexa Fluor 488 secondary antibody (2ug/ml).



EB08035 Immunofluorescence analysis of paraformaldehyde fixed MCF7 cells, permeabilized with 0.15% Triton. Primary incubation 1hr (10ug/ml) followed by Alexa Fluor 488 secondary antibody (2ug/ml), showing cytoplasmic and vesicle staining. The nuclear stain is DAPI (blue). Negative control: Unimmunized goat IgG (10ug/ml) followed by Alexa Fluor 488 secondary antibody (2ug/ml).