



SZABO SCANDIC

Part of Europa Biosite

Produktinformation



Forschungsprodukte & Biochemikalien



Zellkultur & Verbrauchsmaterial



Diagnostik & molekulare Diagnostik



Laborgeräte & Service

Weitere Information auf den folgenden Seiten!
See the following pages for more information!



Lieferung & Zahlungsart

siehe unsere [Liefer- und Versandbedingungen](#)

Zuschläge

- Mindermengenzuschlag
- Trockeneiszuschlag
- Gefahrgutzuschlag
- Expressversand

SZABO-SCANDIC HandelsgmbH

Quellenstraße 110, A-1100 Wien

T. +43(0)1 489 3961-0

F. +43(0)1 489 3961-7

mail@szabo-scandic.com

www.szabo-scandic.com

[linkedin.com/company/szaboscandic](https://www.linkedin.com/company/szaboscandic) 



UK Office

Everest Biotech Ltd

Cherwell Innovation Centre
77 Heyford Park
Upper Heyford
Oxfordshire
OX25 5HD
UK

Enquiries:

info@everestbiotech.com

Sales:

sales@everestbiotech.com

Tech support:

support@everestbiotech.com

Tel: +44 (0)1869 238326

Fax: +44 (0)1869 238327

US Office

Everest Biotech c/o Abcore

405 Maple Street, Suite A106
Ramona,
CA 92065
USA

Inquiries:

info@everestbiotech.com

Sales:

usasales@everestbiotech.com

Tech support:

support@everestbiotech.com

Tel: 888-320-4628 (toll-free)

Fax: 888-841-9041

www.everestbiotech.com

**Research Use Only. Not for
diagnostic or therapeutic use.**

EB08040 - Goat Anti-CADM4 (internal) Antibody

Size: 100µg specific antibody in 200µl



Target Protein

Principal Names: CADM4, cell adhesion molecule 4, IGSF4C, Necl-4, TSL2, synCAM4, TSLC1-like 2, immunoglobulin superfamily, member 4C, nectin-like 4

Official Symbol: CADM4

Accession Number(s): NP_660339.1

Human GeneID(s): [199731](#)

Non-Human GeneID(s): 260299 (mouse)

Immunogen

Peptide with sequence C-KDERFQLEEFS, from the internal region of the protein sequence according to NP_660339.1.

Please note the [peptide](#) is available for sale.

Purification and Storage

Purified from goat serum by ammonium sulphate precipitation followed by antigen affinity chromatography using the immunizing peptide.

Supplied at 0.5 mg/ml in Tris saline, 0.02% sodium azide, pH7.3 with 0.5% bovine serum albumin.

Aliquot and store at -20°C. Minimize freezing and thawing.

Applications Tested

Peptide ELISA: antibody detection limit dilution 1:16000.

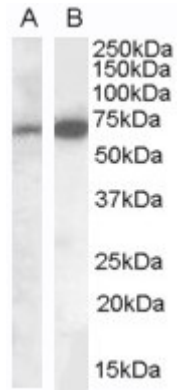
Western blot: Approx 70kDa band observed in Human Brain (Cerebellum) lysates (calculated MW of 42.8kDa according to NP_660339.1). The observed molecular weight corresponds to findings with EB08194, a product of different design reacting to a different part of the same protein. Recommended concentration: 0.1-0.3µg/ml. Primary incubation was 1 hour.

IHC: Paraffin embedded Human Thymus and Skeletal Muscle. Recommended concentration: 2.5µg/ml.

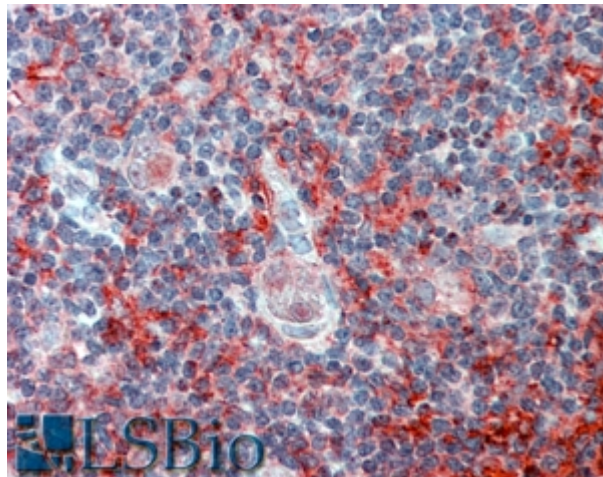
Species Reactivity

Tested: Human

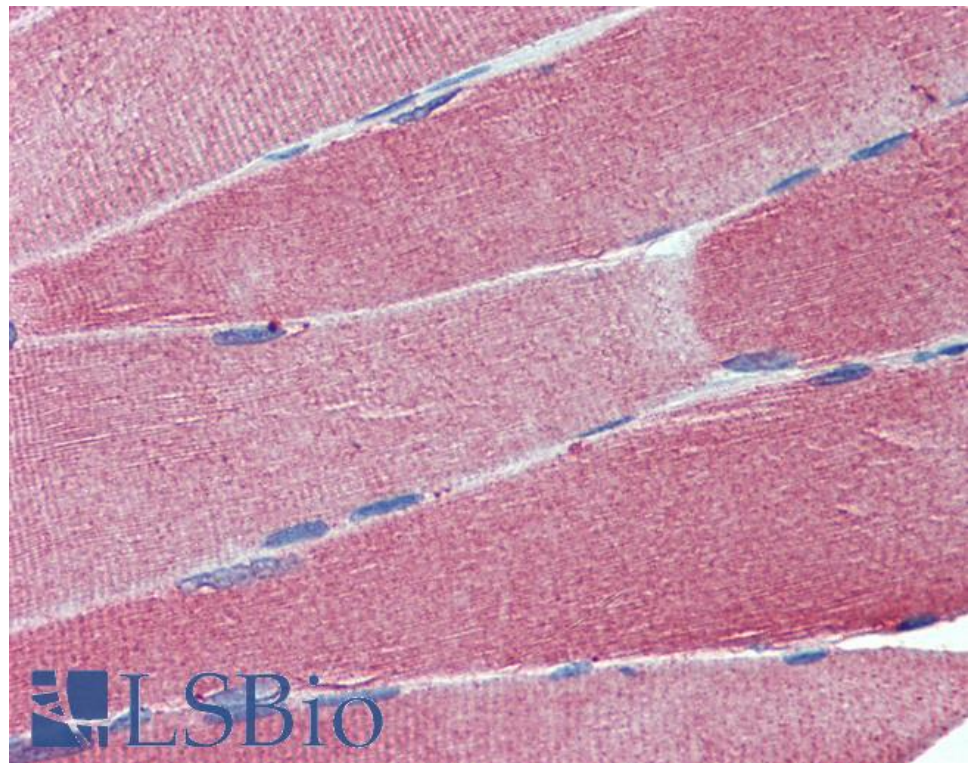
Expected from sequence similarity: Human, Mouse, Rat



Staining of Human Brain (Cerebellum) lysate (35µg protein in RIPA buffer). A) EB08040 (0.1µg/ml) and B) EB08194 (0.05µg/ml). Detected by chemiluminescence.



EB08040 (2.5µg/ml) staining of paraffin embedded Human Thymus. Steamed antigen retrieval with citrate buffer pH 6, AP-staining.



EB08040 (2.5µg/ml) staining of paraffin embedded Human Skeletal Muscle. Steamed antigen retrieval with citrate buffer pH 6, AP-staining.