



SZABO SCANDIC

Part of Europa Biosite

Produktinformation



Forschungsprodukte & Biochemikalien



Zellkultur & Verbrauchsmaterial



Diagnostik & molekulare Diagnostik



Laborgeräte & Service

Weitere Information auf den folgenden Seiten!
See the following pages for more information!



Lieferung & Zahlungsart

siehe unsere [Liefer- und Versandbedingungen](#)

Zuschläge

- Mindermengenzuschlag
- Trockeneiszuschlag
- Gefahrgutzuschlag
- Expressversand

SZABO-SCANDIC HandelsgmbH

Quellenstraße 110, A-1100 Wien

T. +43(0)1 489 3961-0

F. +43(0)1 489 3961-7

mail@szabo-scandic.com

www.szabo-scandic.com

[linkedin.com/company/szaboscandic](https://www.linkedin.com/company/szaboscandic) 



UK Office

Everest Biotech Ltd

Cherwell Innovation Centre
77 Heyford Park
Upper Heyford
Oxfordshire
OX25 5HD
UK

Enquiries:

info@everestbiotech.com

Sales:

sales@everestbiotech.com

Tech support:

support@everestbiotech.com

Tel: +44 (0)1869 238326

Fax: +44 (0)1869 238327

US Office

Everest Biotech c/o Abcore

405 Maple Street, Suite A106
Ramona,
CA 92065
USA

Inquiries:

info@everestbiotech.com

Sales:

usasales@everestbiotech.com

Tech support:

support@everestbiotech.com

Tel: 888-320-4628 (toll-free)

Fax: 888-841-9041

www.everestbiotech.com

**Research Use Only. Not for
diagnostic or therapeutic use.**

EB08090-B - Goat Anti-KCC3 / SLC12A6, Biotinylated Antibody

Size: 100µg specific antibody in 200µl



Target Protein

Principal Names: SLC12A6, solute carrier family 12 (potassium/chloride transporter), member 6, ACCPN, KCC3, KCC3A, KCC3B, K-Cl cotransporter 3, electroneutral potassium-chloride cotransporter 3, potassium chloride cotransporter 3, potassium chloride cotransporter KCC3a-S3, potassium-chloride transporter-3a, potassium-chloride transporter-3b, solute carrier family 12 (potassium/chloride transporters), member 6, DKFZP434D2135

Official Symbol: SLC12A6

Accession Number(s): NP_598408.1; NP_005126.1; NP_001035959.1;
NP_001035961.1; NP_001035962.1

Human GenelD(s): [9990](#)

Important Comments: This antibody is expected to recognise all reported isoforms (NP_598408.1; NP_005126.1; NP_001035959.1; NP_001035961.1; NP_001035962.1); Reported variants represent identical protein: NP_001035959.1; NP_001035960.1

Immunogen

Peptide with sequence SRHIDVCSKTKE., from the internal region of the protein sequence according to NP_598408.1; NP_005126.1; NP_001035959.1; NP_001035961.1; NP_001035962.1.

Please note the [peptide](#) is available for sale.

Purification and Storage

Purified from goat serum by ammonium sulphate precipitation followed by antigen affinity chromatography using the immunizing peptide.

Supplied at 0.5 mg/ml in Tris saline, 0.02% sodium azide, pH7.3 with 0.5% bovine serum albumin.

Aliquot and store at -20°C. Minimize freezing and thawing.

Applications Tested

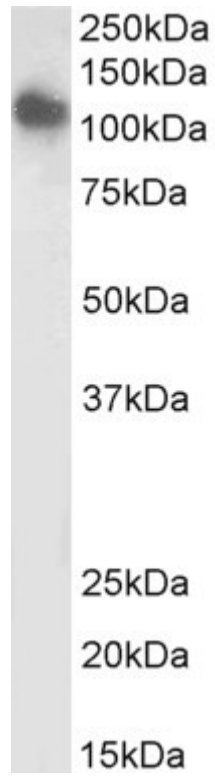
Peptide ELISA: antibody detection limit dilution 1:16000.

Western blot: Approx 120kDa band observed in Human Heart lysates (calculated MW ranging 121-128kDa according to NP_598408.1; NP_005126.1; NP_001035959.1; NP_001035960.1; NP_001035961.1; NP_001035962.1). See non-biotinylated parental product's datasheet for further QC data. Recommended concentration: 0.1-0.3µg/ml.

Species Reactivity

Tested: Human

Expected from sequence similarity: Human



Biotinylated EB08090 (0.1 μ g/ml) staining of Human Heart lysate (35 μ g protein in RIPA buffer), exactly mirroring its parental non-biotinylated product. Primary incubation was 1 hour. Detected by chemiluminescence, using streptavidin-HRP and using NAP blocker as a substitute for skimmed milk.