



SZABO SCANDIC

Part of Europa Biosite

Produktinformation



Forschungsprodukte & Biochemikalien



Zellkultur & Verbrauchsmaterial



Diagnostik & molekulare Diagnostik



Laborgeräte & Service

Weitere Information auf den folgenden Seiten!
See the following pages for more information!



Lieferung & Zahlungsart

siehe unsere [Liefer- und Versandbedingungen](#)

Zuschläge

- Mindermengenzuschlag
- Trockeneiszuschlag
- Gefahrgutzuschlag
- Expressversand

SZABO-SCANDIC HandelsgmbH

Quellenstraße 110, A-1100 Wien

T. +43(0)1 489 3961-0

F. +43(0)1 489 3961-7

mail@szabo-scandic.com

www.szabo-scandic.com

[linkedin.com/company/szaboscandic](https://www.linkedin.com/company/szaboscandic) 



UK Office

Everest Biotech Ltd

Cherwell Innovation Centre
77 Heyford Park
Upper Heyford
Oxfordshire
OX25 5HD
UK

Enquiries:

info@everestbiotech.com

Sales:

sales@everestbiotech.com

Tech support:

support@everestbiotech.com

Tel: +44 (0)1869 238326

Fax: +44 (0)1869 238327

US Office

Everest Biotech c/o Abcore

405 Maple Street, Suite A106
Ramona,
CA 92065
USA

Inquiries:

info@everestbiotech.com

Sales:

usasales@everestbiotech.com

Tech support:

support@everestbiotech.com

Tel: 888-320-4628 (toll-free)

Fax: 888-841-9041

www.everestbiotech.com

**Research Use Only. Not for
diagnostic or therapeutic use.**

EB08099 - Goat Anti-LITAF Antibody

Size: 100µg specific antibody in 200µl



Target Protein

Principal Names: LITAF, lipopolysaccharide-induced TNF factor, CMT1C, FLJ38636, MGC116698, MGC116700, MGC116701, MGC125274, MGC125275, MGC125276, PIG7, SIMPLE, TP53I7, LPS-induced TNF-alpha factor, small integral membrane protein of lysosome/late endosome, tumor protein

Official Symbol: LITAF

Accession Number(s): NP_004853.2; NP_001129945.1

Human GeneID(s): [9516](#)

Non-Human GeneID(s): 56722 (mouse), 65161 (rat)

Important Comments: This antibody is expected to crossreact with both reported isoforms (NP_004853.2; NP_001129945.1).

Immunogen

Peptide with sequence C-PDGKGMNPPSYTQ, from the internal region of the protein sequence according to NP_004853.2; NP_001129945.1.

Please note the [peptide](#) is available for sale.

Purification and Storage

Purified from goat serum by ammonium sulphate precipitation followed by antigen affinity chromatography using the immunizing peptide.

Supplied at 0.5 mg/ml in Tris saline, 0.02% sodium azide, pH7.3 with 0.5% bovine serum albumin.

Aliquot and store at -20°C. Minimize freezing and thawing.

Applications Tested

Peptide ELISA: antibody detection limit dilution 1:8000.

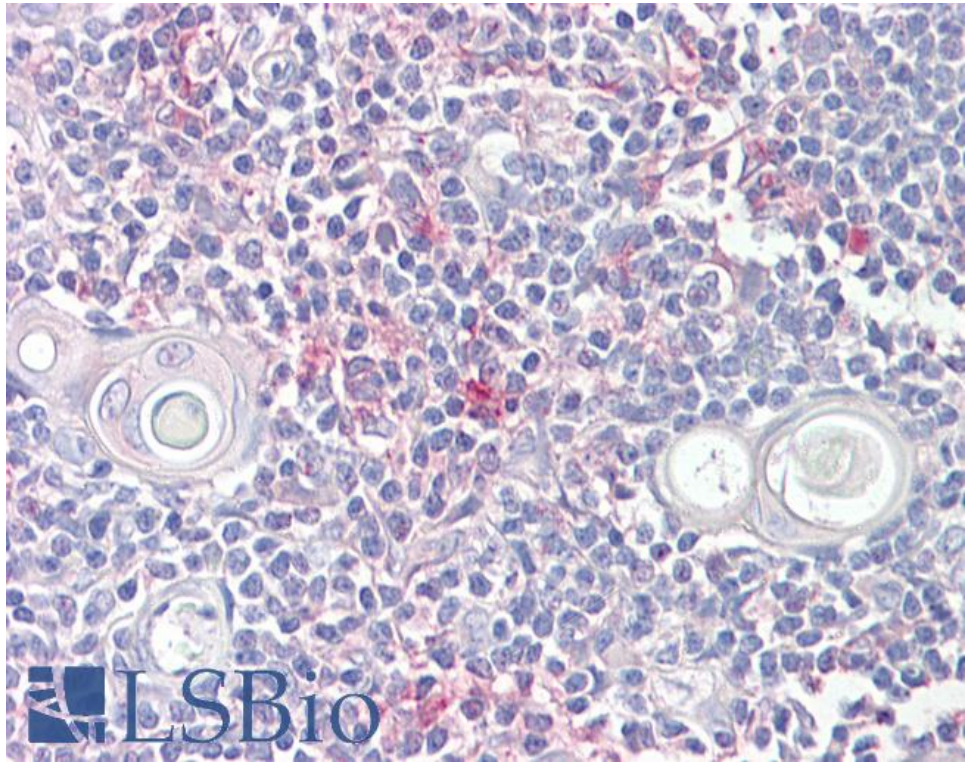
Western blot: Preliminary experiments gave an approx 25kDa band in Human Lymph Node lysates and in lysates of cell lines HeLa and HepG2 after 0.1µg/ml antibody staining. Please note that currently we cannot find an explanation in the literature for the band we observe given the calculated size of 17.1kDa according to NP_004853.2. The 25kDa band was successfully blocked by incubation with the immunizing peptide.

IHC: Paraffin embedded Human Thymus. Recommended concentration: 6.5µg/ml.

Species Reactivity

Tested: Human

Expected from sequence similarity: Human, Mouse, Rat



EB08099 (6.5µg/ml) staining of paraffin embedded Human Thymus. Steamed antigen retrieval with citrate buffer pH 6, AP-staining.