



# SZABO SCANDIC

Part of Europa Biosite

## Produktinformation



Forschungsprodukte & Biochemikalien



Zellkultur & Verbrauchsmaterial



Diagnostik & molekulare Diagnostik



Laborgeräte & Service

Weitere Information auf den folgenden Seiten!  
See the following pages for more information!



### Lieferung & Zahlungsart

siehe unsere [Liefer- und Versandbedingungen](#)

### Zuschläge

- Mindermengenzuschlag
- Trockeneiszuschlag
- Gefahrgutzuschlag
- Expressversand

### SZABO-SCANDIC HandelsgmbH

Quellenstraße 110, A-1100 Wien

T. +43(0)1 489 3961-0

F. +43(0)1 489 3961-7

[mail@szabo-scandic.com](mailto:mail@szabo-scandic.com)

[www.szabo-scandic.com](http://www.szabo-scandic.com)

[linkedin.com/company/szaboscandic](https://www.linkedin.com/company/szaboscandic) 



## UK Office

### Everest Biotech Ltd

Cherwell Innovation Centre  
77 Heyford Park  
Upper Heyford  
Oxfordshire  
OX25 5HD  
UK

Enquiries:

[info@everestbiotech.com](mailto:info@everestbiotech.com)

Sales:

[sales@everestbiotech.com](mailto:sales@everestbiotech.com)

Tech support:

[support@everestbiotech.com](mailto:support@everestbiotech.com)

Tel: +44 (0)1869 238326

Fax: +44 (0)1869 238327

## US Office

### Everest Biotech c/o Abcore

405 Maple Street, Suite A106  
Ramona,  
CA 92065  
USA

Inquiries:

[info@everestbiotech.com](mailto:info@everestbiotech.com)

Sales:

[usasales@everestbiotech.com](mailto:usasales@everestbiotech.com)

Tech support:

[support@everestbiotech.com](mailto:support@everestbiotech.com)

Tel: 888-320-4628 (toll-free)

Fax: 888-841-9041

[www.everestbiotech.com](http://www.everestbiotech.com)

**Research Use Only. Not for  
diagnostic or therapeutic use.**

## EB08182 - Goat Anti-CRP2 / CSRP2 Antibody

Size: 100µg specific antibody in 200µl



### Target Protein

**Principal Names:** CRP2, CSRP2, cysteine and glycine-rich protein 2, LMO5, SmLIM, LIM domain only 5, smooth muscle

**Official Symbol:** CSRP2

**Accession Number(s):** NP\_001312.1

**Human GeneID(s):** [1466](#)

**Non-Human GeneID(s):** 13008 (mouse)

### Immunogen

Peptide with sequence C-ERLGIKPESVQP, from the internal region of the protein sequence according to NP\_001312.1.

Please note the [peptide](#) is available for sale.

### Purification and Storage

Purified from goat serum by ammonium sulphate precipitation followed by antigen affinity chromatography using the immunizing peptide.

Supplied at 0.5 mg/ml in Tris saline, 0.02% sodium azide, pH7.3 with 0.5% bovine serum albumin.

Aliquot and store at -20°C. Minimize freezing and thawing.

### Applications Tested

**Peptide ELISA:** antibody detection limit dilution 1:64000.

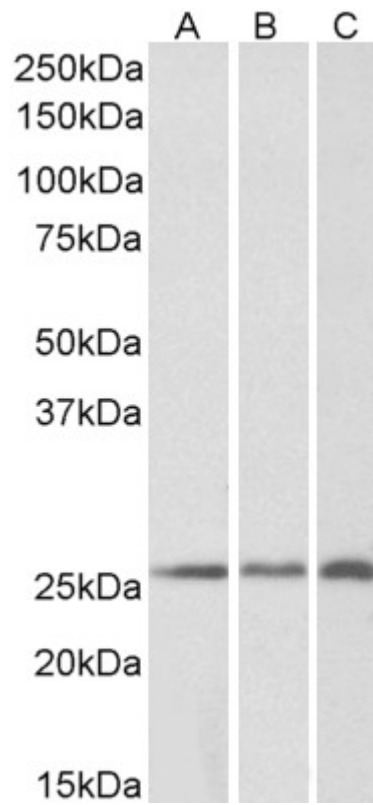
**Western blot:** Approx 26kDa band observed in Human, Mouse and Rat Kidney lysates (calculated MW of 21.0kDa according to NP\_001312.1). The observed molecular weight corresponds to earlier findings in literature with different antibodies (Huber et al, J Biol Chem. 2000 Feb 25;275(8):5504-11; PMID: 10681529). In transfected HEK293 transiently expressing CRP2 a band of approx. 26kDa is observed. This band is not observed in the non-transfected HEK293. Recommended concentration: 0.1-0.3µg/ml. Primary incubation was 1 hour.

**IHC:** In paraffin embedded Human Lung shows staining of the endothelial cells of a blood vessel. Recommended concentration: 3-6µg/ml.

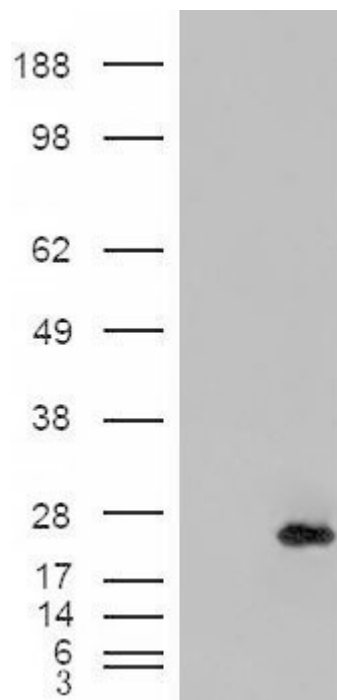
### Species Reactivity

**Tested:** Human, Mouse, Rat

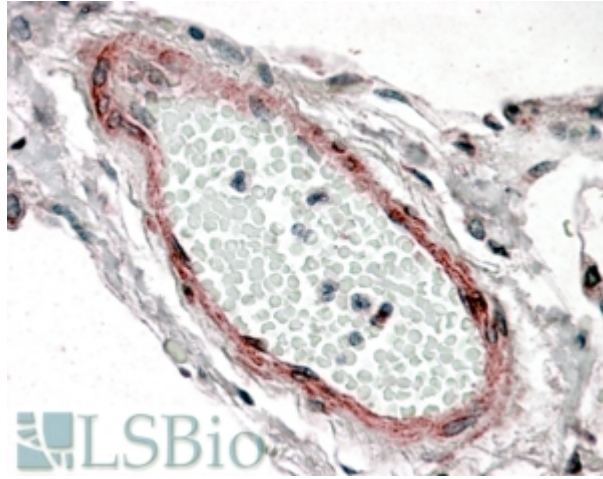
**Expected from sequence similarity:** Human, Mouse, Rat, Horse



EB08182 (0.2 $\mu$ g/ml) staining of Human (A), Mouse (B) and Rat (C) Kidney lysates (35 $\mu$ g protein in RIPA buffer).  
Detected by chemiluminescence



HEK293 overexpressing CRP2 (RC201565) and probed with EB08182 (mock transfection in first lane), tested by  
Origene.



EB08182 (3.8µg/ml) staining of paraffin embedded Human Lung. Steamed antigen retrieval with citrate buffer pH 6, AP-staining.