



SZABO SCANDIC

Part of Europa Biosite

Produktinformation



Forschungsprodukte & Biochemikalien



Zellkultur & Verbrauchsmaterial



Diagnostik & molekulare Diagnostik



Laborgeräte & Service

Weitere Information auf den folgenden Seiten!
See the following pages for more information!



Lieferung & Zahlungsart

siehe unsere [Liefer- und Versandbedingungen](#)

Zuschläge

- Mindermengenzuschlag
- Trockeneiszuschlag
- Gefahrgutzuschlag
- Expressversand

SZABO-SCANDIC HandelsgmbH

Quellenstraße 110, A-1100 Wien

T. +43(0)1 489 3961-0

F. +43(0)1 489 3961-7

mail@szabo-scandic.com

www.szabo-scandic.com

[linkedin.com/company/szaboscandic](https://www.linkedin.com/company/szaboscandic) 



UK Office

Everest Biotech Ltd

Cherwell Innovation Centre
77 Heyford Park
Upper Heyford
Oxfordshire
OX25 5HD
UK

Enquiries:

info@everestbiotech.com

Sales:

sales@everestbiotech.com

Tech support:

support@everestbiotech.com

Tel: +44 (0)1869 238326

Fax: +44 (0)1869 238327

US Office

Everest Biotech c/o Abcore

405 Maple Street, Suite A106
Ramona,
CA 92065
USA

Inquiries:

info@everestbiotech.com

Sales:

usasales@everestbiotech.com

Tech support:

support@everestbiotech.com

Tel: 888-320-4628 (toll-free)

Fax: 888-841-9041

www.everestbiotech.com

**Research Use Only. Not for
diagnostic or therapeutic use.**

EB08195 - Goat Anti-Proenkephalin Antibody

Size: 100µg specific antibody in 200µl



Target Protein

Principal Names: proenkephalin, PENK

Official Symbol: PENK

Accession Number(s): NP_006202.1

Human GeneID(s): [5179](#)

Immunogen

Peptide with sequence C-RSHHQDGSNDNEE, from the internal region of the protein sequence according to NP_006202.1.

Please note the [peptide](#) is available for sale.

Purification and Storage

Purified from goat serum by ammonium sulphate precipitation followed by antigen affinity chromatography using the immunizing peptide.

Supplied at 0.5 mg/ml in Tris saline, 0.02% sodium azide, pH7.3 with 0.5% bovine serum albumin.

Aliquot and store at -20°C. Minimize freezing and thawing.

Applications Tested

Peptide ELISA: antibody detection limit dilution 1:32000.

Western blot: Approx 37kDa band observed in Human Adrenal Gland lysates (calculated MW of 30.8kDa according to NP_006202.1). The observed molecular weight corresponds to earlier findings in literature with different antibodies (Normant and Loh, Endocrinology. 1998 Apr;139(4):2137-45; PMID: 9529003). Recommended concentration: 1-3µg/ml.

IHC: Frozen section of Human Hypothalamus shows staining of dense enkephalinergic axon plexus and scattered neuronal cell bodies (higher magnification inset) in the human infundibular nucleus. Recommended concentration: 0.3-1µg/ml.

Species Reactivity

Tested: Human

Expected from sequence similarity: Human

Specific Reference

This antibody has been successfully used in IHC in Human:

Skrapits K, Borsay B, Herczeg L, Ciofi P, Liposits Z, Hrabovszky E.

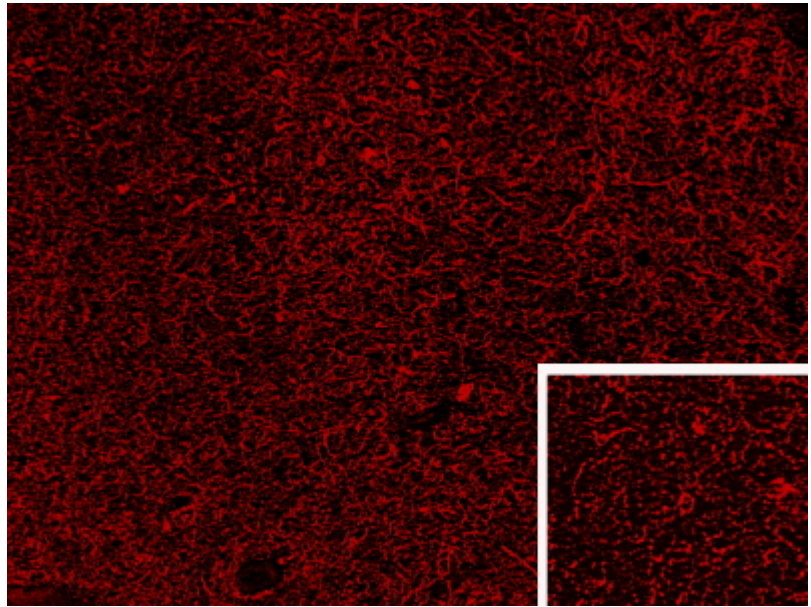
Neuropeptide co-expression in hypothalamic kisspeptin neurons of laboratory animals and the human.

Front Neurosci. 2015 Feb 10;9:29.

PMID: 25713511



EB08195 (0.3 μ g/ml) staining of Human Adrenal Gland lysate (35 μ g protein in RIPA buffer). Primary incubation was 1 hour. Detected by chemiluminescence.



EB08195 (0.3 μ g/ml) staining of PFA-perfused cryosection of Human Hypothalamus. Antigen retrieval with citrate buffer pH 6 at 80C for 30min, Cy3-staining. Data obtained by Prof. Erik Hrabovszky, Inst, Exp, Med., Budapest, Hungary.