



SZABO SCANDIC

Part of Europa Biosite

Produktinformation



Forschungsprodukte & Biochemikalien



Zellkultur & Verbrauchsmaterial



Diagnostik & molekulare Diagnostik



Laborgeräte & Service

Weitere Information auf den folgenden Seiten!
See the following pages for more information!



Lieferung & Zahlungsart

siehe unsere [Liefer- und Versandbedingungen](#)

Zuschläge

- Mindermengenzuschlag
- Trockeneiszuschlag
- Gefahrgutzuschlag
- Expressversand

SZABO-SCANDIC HandelsgmbH

Quellenstraße 110, A-1100 Wien

T. +43(0)1 489 3961-0

F. +43(0)1 489 3961-7

mail@szabo-scandic.com

www.szabo-scandic.com

[linkedin.com/company/szaboscandic](https://www.linkedin.com/company/szaboscandic) 



UK Office

Everest Biotech Ltd

Cherwell Innovation Centre
77 Heyford Park
Upper Heyford
Oxfordshire
OX25 5HD
UK

Enquiries:

info@everestbiotech.com

Sales:

sales@everestbiotech.com

Tech support:

support@everestbiotech.com

Tel: +44 (0)1869 238326

Fax: +44 (0)1869 238327

US Office

Everest Biotech c/o Abcore

405 Maple Street, Suite A106
Ramona,
CA 92065
USA

Inquiries:

info@everestbiotech.com

Sales:

usasales@everestbiotech.com

Tech support:

support@everestbiotech.com

Tel: 888-320-4628 (toll-free)

Fax: 888-841-9041

www.everestbiotech.com

**Research Use Only. Not for
diagnostic or therapeutic use.**

EB08211 - Goat Anti-ABCB5 Antibody

Size: 100µg specific antibody in 200µl



Target Protein

Principal Names: ATP-binding cassette, sub-family B (MDR/TAP), member 5, ABCB5alpha, ABCB5beta, EST422562, ATP-binding cassette, sub-family B, member 5N: P-glycoprotein ABCB5

Official Symbol: ABCB5

Accession Number(s): NP_848654.3; NP_001157413.1

Human GeneID(s): [340273](#)

Important Comments: This antibody is expected to recognise both reported isoforms (NP_848654.3; NP_001157413.1)

Immunogen

Peptide with sequence C-QTQHRNTSKKAQ, from the internal region of the protein sequence according to NP_848654.3; NP_001157413.1.

Please note the [peptide](#) is available for sale.

Purification and Storage

Purified from goat serum by ammonium sulphate precipitation followed by antigen affinity chromatography using the immunizing peptide.

Supplied at 0.5 mg/ml in Tris saline, 0.02% sodium azide, pH7.3 with 0.5% bovine serum albumin.

Aliquot and store at -20°C. Minimize freezing and thawing.

Applications Tested

Peptide ELISA: antibody detection limit dilution 1:32000.

Western blot: Approx 80kDa band observed in lysates of cell line A431 (calculated MW of 89.8kDa according to NP_848654.3). Recommended concentration: 0.3-1µg/ml. Primary incubation was 1 hour.

Flow Cytometry: Flow cytometric analysis of HepG2 cells. Recommended concentration: 10ug/ml.

Species Reactivity

Tested: Human

Expected from sequence similarity: Human

Specific Reference

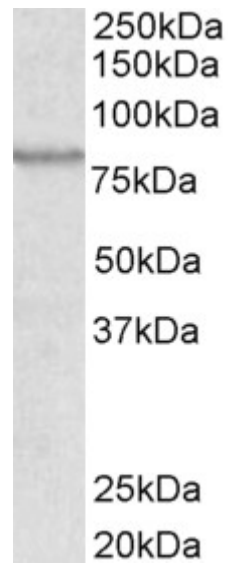
This antibody has been successfully used in Flow Cytometry on Human:

Cheung ST, Cheung PF, Cheng CK, Wong NC, Fan ST.

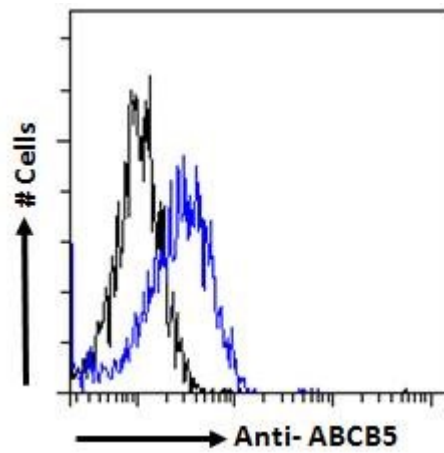
Granulin-epithelin precursor and ATP-dependent binding cassette (ABC)B5 regulate liver cancer cell chemoresistance.

Gastroenterology. 2011 Jan;140(1):344-55.

PMID: 20682318



EB08211 (0.3µg/ml) staining of lysates of cell line A431 (35µg protein in RIPA buffer). Detected by chemiluminescence.



Flow cytometric analysis of paraformaldehyde fixed HepG2 cells (blue line), permeabilized with 0.5% Triton. Primary incubation 1hr (10ug/ml) followed by Alexa Fluor 488 secondary antibody (1ug/ml). IgG control: Unimmunized goat IgG (black line) followed by Alexa Fluor 488 secondary antibody.