



SZABO SCANDIC

Part of Europa Biosite

Produktinformation



Forschungsprodukte & Biochemikalien



Zellkultur & Verbrauchsmaterial



Diagnostik & molekulare Diagnostik



Laborgeräte & Service

Weitere Information auf den folgenden Seiten!
See the following pages for more information!



Lieferung & Zahlungsart

siehe unsere [Liefer- und Versandbedingungen](#)

Zuschläge

- Mindermengenzuschlag
- Trockeneiszuschlag
- Gefahrgutzuschlag
- Expressversand

SZABO-SCANDIC HandelsgmbH

Quellenstraße 110, A-1100 Wien

T. +43(0)1 489 3961-0

F. +43(0)1 489 3961-7

mail@szabo-scandic.com

www.szabo-scandic.com

[linkedin.com/company/szaboscandic](https://www.linkedin.com/company/szaboscandic) 



UK Office

Everest Biotech Ltd

Cherwell Innovation Centre
77 Heyford Park
Upper Heyford
Oxfordshire
OX25 5HD
UK

Enquiries:

info@everestbiotech.com

Sales:

sales@everestbiotech.com

Tech support:

support@everestbiotech.com

Tel: +44 (0)1869 238326

Fax: +44 (0)1869 238327

US Office

Everest Biotech c/o Abcore

405 Maple Street, Suite A106
Ramona,
CA 92065
USA

Inquiries:

info@everestbiotech.com

Sales:

usasales@everestbiotech.com

Tech support:

support@everestbiotech.com

Tel: 888-320-4628 (toll-free)

Fax: 888-841-9041

www.everestbiotech.com

**Research Use Only. Not for
diagnostic or therapeutic use.**

EB08290 - Goat Anti-BDH2 / DHRS6 (aa 60 to 71) Antibody

Size: 100µg specific antibody in 200µl



Target Protein

Principal Names: BDH2, DHRS6, 3-hydroxybutyrate dehydrogenase, type 2, EFA6R, FLJ13261, PRO20933, UCPA-OR, UNQ6308, dehydrogenase/reductase (SDR family) member 6, oxidoreductase UCPA

Official Symbol: BDH2

Accession Number(s): NP_064524.3

Human GeneID(s): [56898](#)

Immunogen

Peptide with sequence C-TKKKQIDQFANE, from the internal region of the protein sequence according to NP_064524.3.

Please note the [peptide](#) is available for sale.

Purification and Storage

Purified from goat serum by ammonium sulphate precipitation followed by antigen affinity chromatography using the immunizing peptide.

Supplied at 0.5 mg/ml in Tris saline, 0.02% sodium azide, pH7.3 with 0.5% bovine serum albumin.

Aliquot and store at -20°C. Minimize freezing and thawing.

Applications Tested

Peptide ELISA: antibody detection limit dilution 1:64000.

Western blot: Approx 26kDa band observed in Human Brain (Cerebellum), Kidney and Liver lysates (calculated MW of 26.7kDa according to NP_064524.3). In transfected HEK293 transiently expressing BDH2 a band of approx. 29kDa is observed. This band is not observed in the non-transfected HEK293. Recommended concentration: 0.3-1µg/ml. Primary incubation was 1 hour.

IHC: Paraffin embedded Human Kidney. Recommended concentration: 5µg/ml.

Species Reactivity

Tested: Human

Expected from sequence similarity: Human, Mouse, Rat

Specific Reference

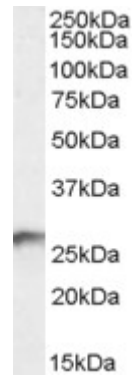
This antibody has been successfully used in Western Blot on Human:

Buhrke T, Lengler I, Lampen A.

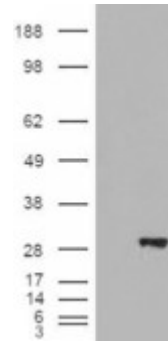
Analysis of proteomic changes induced upon cellular differentiation of the human intestinal cell line Caco-2.

Dev Growth Differ. 2011 Apr;53(3):411-26

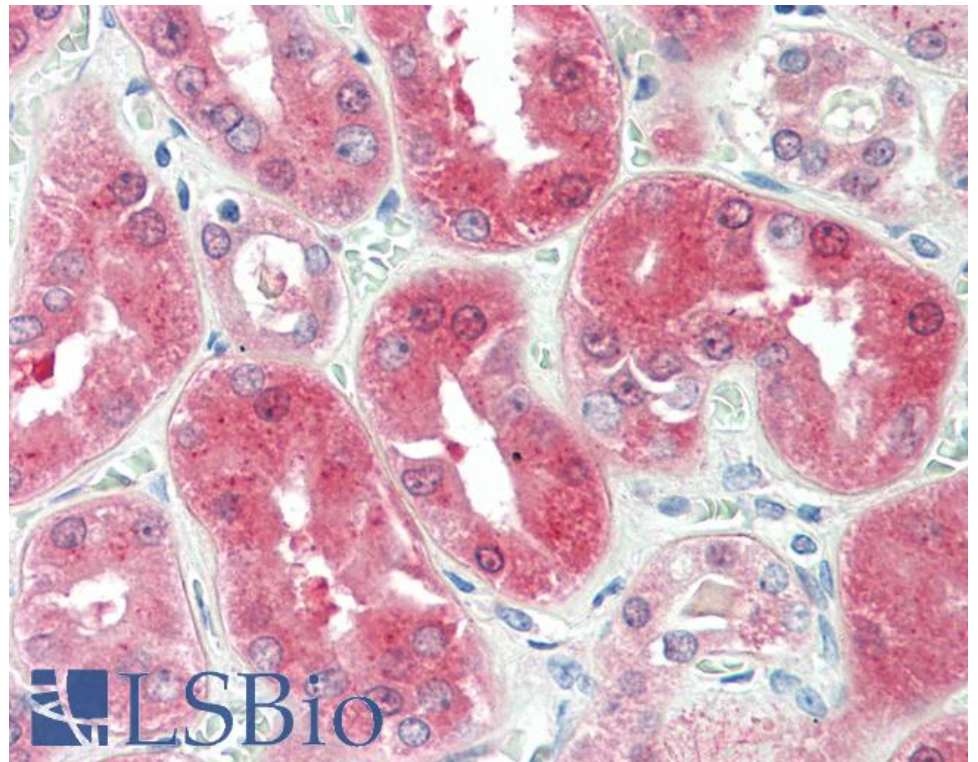
PMID: 21492153



EB08290 (0.3 μ g/ml) staining of Human Kidney lysate (35 μ g protein in RIPA buffer). Detected by chemiluminescence.



HEK293 overexpressing BDH2 (RC210586) and probed with EB08290 (mock transfection in first lane), tested by Origene.



EB08290 (5 μ g/ml) staining of paraffin embedded Human Kidney. Steamed antigen retrieval with citrate buffer pH 6, AP-staining.