



SZABO SCANDIC

Part of Europa Biosite

Produktinformation



Forschungsprodukte & Biochemikalien



Zellkultur & Verbrauchsmaterial



Diagnostik & molekulare Diagnostik



Laborgeräte & Service

Weitere Information auf den folgenden Seiten!
See the following pages for more information!



Lieferung & Zahlungsart

siehe unsere [Liefer- und Versandbedingungen](#)

Zuschläge

- Mindermengenzuschlag
- Trockeneiszuschlag
- Gefahrgutzuschlag
- Expressversand

SZABO-SCANDIC HandelsgmbH

Quellenstraße 110, A-1100 Wien

T. +43(0)1 489 3961-0

F. +43(0)1 489 3961-7

mail@szabo-scandic.com

www.szabo-scandic.com

[linkedin.com/company/szaboscandic](https://www.linkedin.com/company/szaboscandic) 



UK Office

Everest Biotech Ltd

Cherwell Innovation Centre
77 Heyford Park
Upper Heyford
Oxfordshire
OX25 5HD
UK

Enquiries:

info@everestbiotech.com

Sales:

sales@everestbiotech.com

Tech support:

support@everestbiotech.com

Tel: +44 (0)1869 238326

Fax: +44 (0)1869 238327

US Office

Everest Biotech c/o Abcore

405 Maple Street, Suite A106
Ramona,
CA 92065
USA

Inquiries:

info@everestbiotech.com

Sales:

usasales@everestbiotech.com

Tech support:

support@everestbiotech.com

Tel: 888-320-4628 (toll-free)

Fax: 888-841-9041

www.everestbiotech.com

**Research Use Only. Not for
diagnostic or therapeutic use.**

EB08362 - Goat Anti-Estrogen receptor 2 Antibody

Size: 100µg specific antibody in 200µl



Target Protein

Principal Names: ESR2, estrogen receptor 2 (ER beta), ER-BETA, ESR-BETA, ESRB, ESTRB, Erb, NR3A2, estrogen receptor beta, estrogen receptor beta 4

Official Symbol: ESR2

Accession Number(s): NP_001035365.1; NP_001035366.1; NP_001428.1

Human GeneID(s): [2100](#)

Important Comments: This antibody is expected to recognise all three isoforms (NP_001035365.1; NP_001035366.1; NP_001428.1)

Immunogen

Peptide with sequence RRQRSADEQLHC, from the internal region of the protein sequence according to NP_001035365.1; NP_001035366.1; NP_001428.1.

Please note the [peptide](#) is available for sale.

Purification and Storage

Purified from goat serum by ammonium sulphate precipitation followed by antigen affinity chromatography using the immunizing peptide.

Supplied at 0.5 mg/ml in Tris saline, 0.02% sodium azide, pH7.3 with 0.5% bovine serum albumin.

Aliquot and store at -20°C. Minimize freezing and thawing.

Applications Tested

Peptide ELISA: antibody detection limit dilution 1:128000.

Western blot: Approx 55kDa band observed in Human Liver and Thymus lysates (calculated MW of 55.5kDa according to Human NP_001035365.1). An additional band of 35kDa was observed in some (not all) Liver lysates which was successfully blocked by incubation with the immunizing peptide. Recommended concentration: 0.3-2µg/ml.

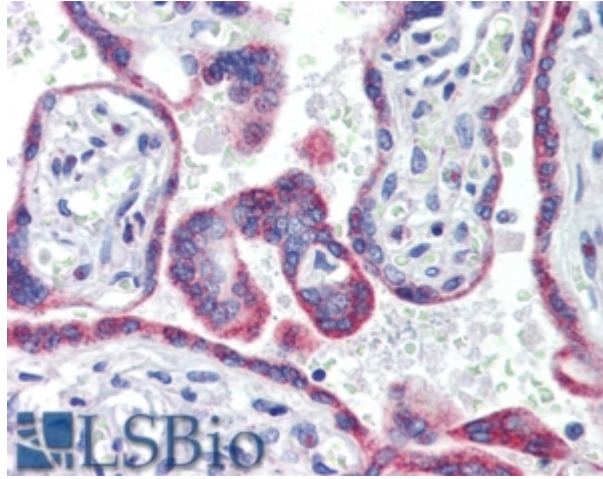
Primary incubation was 1 hour.

IHC: In paraffin embedded Human Placenta shows staining of syncytiotrophoblasts. Recommended concentration, 3-5µg/ml.

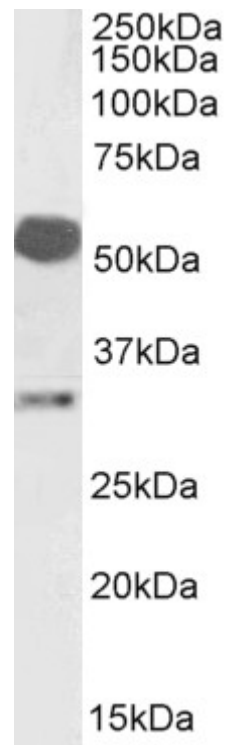
Species Reactivity

Tested: Human

Expected from sequence similarity: Human



EB08362 (3.8 μ g/ml) staining of paraffin embedded Human Placenta. Steamed antigen retrieval with citrate buffer pH 6, AP-staining.



EB08362 (2 μ g/ml) staining of Human Liver lysate (35 μ g protein in RIPA buffer). Detected by chemiluminescence.