



SZABO SCANDIC

Part of Europa Biosite

Produktinformation



Forschungsprodukte & Biochemikalien



Zellkultur & Verbrauchsmaterial



Diagnostik & molekulare Diagnostik



Laborgeräte & Service

Weitere Information auf den folgenden Seiten!
See the following pages for more information!



Lieferung & Zahlungsart

siehe unsere [Liefer- und Versandbedingungen](#)

Zuschläge

- Mindermengenzuschlag
- Trockeneiszuschlag
- Gefahrgutzuschlag
- Expressversand

SZABO-SCANDIC HandelsgmbH

Quellenstraße 110, A-1100 Wien

T. +43(0)1 489 3961-0

F. +43(0)1 489 3961-7

mail@szabo-scandic.com

www.szabo-scandic.com

[linkedin.com/company/szaboscandic](https://www.linkedin.com/company/szaboscandic) 



UK Office

Everest Biotech Ltd

Cherwell Innovation Centre
77 Heyford Park
Upper Heyford
Oxfordshire
OX25 5HD
UK

Enquiries:

info@everestbiotech.com

Sales:

sales@everestbiotech.com

Tech support:

support@everestbiotech.com

Tel: +44 (0)1869 238326

Fax: +44 (0)1869 238327

US Office

Everest Biotech c/o Abcore

405 Maple Street, Suite A106
Ramona,
CA 92065
USA

Inquiries:

info@everestbiotech.com

Sales:

usasales@everestbiotech.com

Tech support:

support@everestbiotech.com

Tel: 888-320-4628 (toll-free)

Fax: 888-841-9041

www.everestbiotech.com

**Research Use Only. Not for
diagnostic or therapeutic use.**

EB08387 - Goat Anti-NOVA1 Antibody

Size: 100µg specific antibody in 200µl



Target Protein

Principal Names: NOVA1, neuro-oncological ventral antigen 1, Nova-1, paraneoplastic Ri antigen, ventral neuron-specific protein 1

Official Symbol: NOVA1

Accession Number(s): NP_002506.2 ; NP_006480.2 ; NP_006482.1

Human GeneID(s): [4857](#)

Important Comments: This antibody is expected to recognise all three reported isoforms (NP_002506.2 ; NP_006480.2 ; NP_006482.1)

Immunogen

Peptide with sequence C-REMPQNVAKTEPVVS, from the internal region of the protein sequence according to NP_002506.2 ; NP_006480.2 ; NP_006482.1.

Please note the [peptide](#) is available for sale.

Purification and Storage

Purified from goat serum by ammonium sulphate precipitation followed by antigen affinity chromatography using the immunizing peptide.

Supplied at 0.5 mg/ml in Tris saline, 0.02% sodium azide, pH7.3 with 0.5% bovine serum albumin.

Aliquot and store at -20°C. Minimize freezing and thawing.

Applications Tested

Peptide ELISA: antibody detection limit dilution 1:64000.

Western blot: Approx 50-55kDa band observed in Human Breast Cancer lysates (calculated MW of 51.7kDa according to NP_002506.2). In transfected HEK293 transiently expressing NOVA1 a band of approx. 52kDa is observed. This band is not observed in the non-transfected HEK293. Recommended concentration: 0.01-0.03µg/ml. Primary incubation was 1 hour.

IHC: Paraffin embedded Human Brain (Cortex) and Heart. Recommended concentration: 5µg/ml.

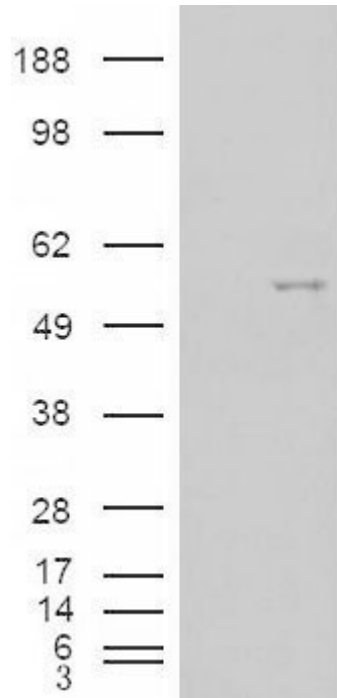
Species Reactivity

Tested: Human

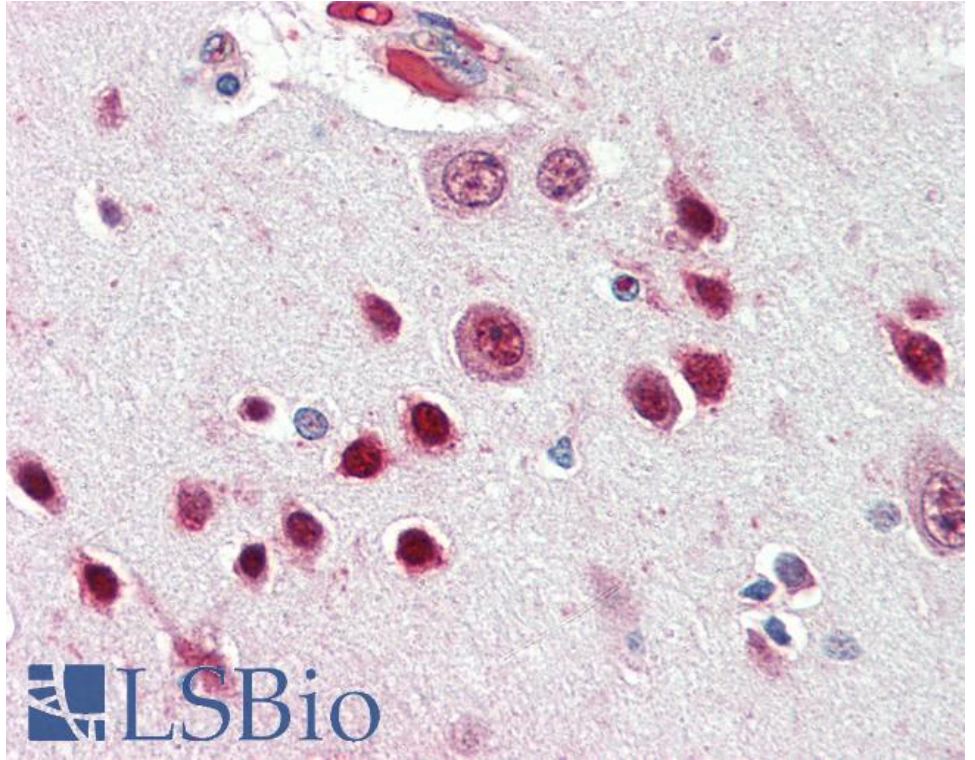
Expected from sequence similarity: Human



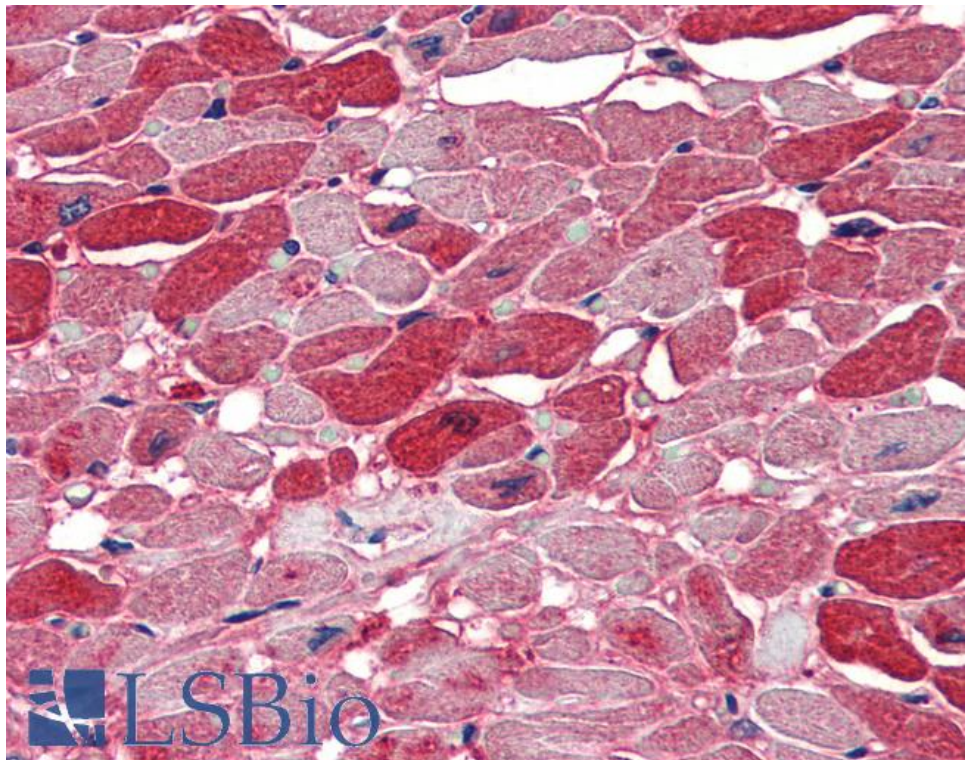
EB08387 (0.01 μ g/ml) staining of Human Breast Cancer lysate (35 μ g protein in RIPA buffer). Detected by chemiluminescence.



HEK293 overexpressing NOVA1 (RC210407) and probed with EB08387 (mock transfection in first lane), tested by Origene.



EB08387 (5µg/ml) staining of paraffin embedded Human Cortex. Steamed antigen retrieval with citrate buffer pH 6, AP-staining.



EB08387 (5µg/ml) staining of paraffin embedded Human Heart. Steamed antigen retrieval with citrate buffer pH 6, AP-staining.