



# SZABO SCANDIC

Part of Europa Biosite

## Produktinformation



Forschungsprodukte & Biochemikalien



Zellkultur & Verbrauchsmaterial



Diagnostik & molekulare Diagnostik



Laborgeräte & Service

Weitere Information auf den folgenden Seiten!  
See the following pages for more information!



### Lieferung & Zahlungsart

siehe unsere [Liefer- und Versandbedingungen](#)

### Zuschläge

- Mindermengenzuschlag
- Trockeneiszuschlag
- Gefahrgutzuschlag
- Expressversand

### SZABO-SCANDIC HandelsgmbH

Quellenstraße 110, A-1100 Wien

T. +43(0)1 489 3961-0

F. +43(0)1 489 3961-7

[mail@szabo-scandic.com](mailto:mail@szabo-scandic.com)

[www.szabo-scandic.com](http://www.szabo-scandic.com)

[linkedin.com/company/szaboscandic](https://www.linkedin.com/company/szaboscandic) 



## UK Office

### Everest Biotech Ltd

Cherwell Innovation Centre  
77 Heyford Park  
Upper Heyford  
Oxfordshire  
OX25 5HD  
UK

Enquiries:

[info@everestbiotech.com](mailto:info@everestbiotech.com)

Sales:

[sales@everestbiotech.com](mailto:sales@everestbiotech.com)

Tech support:

[support@everestbiotech.com](mailto:support@everestbiotech.com)

Tel: +44 (0)1869 238326

Fax: +44 (0)1869 238327

## US Office

### Everest Biotech c/o Abcore

405 Maple Street, Suite A106  
Ramona,  
CA 92065  
USA

Inquiries:

[info@everestbiotech.com](mailto:info@everestbiotech.com)

Sales:

[usasales@everestbiotech.com](mailto:usasales@everestbiotech.com)

Tech support:

[support@everestbiotech.com](mailto:support@everestbiotech.com)

Tel: 888-320-4628 (toll-free)

Fax: 888-841-9041

[www.everestbiotech.com](http://www.everestbiotech.com)

**Research Use Only. Not for  
diagnostic or therapeutic use.**

## EB08402 - Goat Anti-Pnpla3 / Adiponutrin (mouse) Antibody

Size: 100µg specific antibody in 200µl



### Target Protein

**Principal Names:** Pnpla3, patatin-like phospholipase domain containing 3, Adpn, adiponutrin

**Official Symbol:** Pnpla3

**Accession Number(s):** NP\_473429.2

**Human GeneID(s):** [80339](#)

**Non-Human GeneID(s):** 116939 (mouse), 362972 (rat)

**Important Comments:** This antibody is raised against a peptide derived from the Mouse protein sequence and this peptide differs from Human only in position 2.

### Immunogen

Peptide with sequence EHDICPKVKSTN, from the internal region of the protein sequence according to NP\_473429.2.

Please note the [peptide](#) is available for sale.

### Purification and Storage

Purified from goat serum by ammonium sulphate precipitation followed by antigen affinity chromatography using the immunizing peptide.

Supplied at 0.5 mg/ml in Tris saline, 0.02% sodium azide, pH7.3 with 0.5% bovine serum albumin.

Aliquot and store at -20°C. Minimize freezing and thawing.

### Applications Tested

**Peptide ELISA:** antibody detection limit dilution 1:16000.

**Western blot:** Approx 45kDa band observed in Mouse Adrenal Gland lysates, and also in preliminary testing of Mouse and Human Kidney and Rat Adrenal Gland lysate (calculated MW of 42.6Da according to Mouse NP\_473429.2). Recommended concentration: 0.01-0.03µg/ml. Primary incubation 1 hour at room temperature.

**IHC:** Paraffin embedded Human Kidney. Recommended concentration: 8µg/ml.

### Species Reactivity

**Tested:** Human, Mouse

**Expected from sequence similarity:** Human, Mouse, Rat

### Specific References

**This antibody (previous batch) has been successfully used in WB on Mouse:**

Ryuta Sugihara, Manabu Taneike, Tomokazu Murakawa, Takahito Tamai, Hiromichi Ueda, Rika Kitazume-Taneike, Takafumi Oka, Yasuhiro Akazawa, Hiroki Nishida, Kentaro Mine, Ayana Hioki, Jumpei Omi, Shigemiki Omiya, Junken Aoki, Kazutaka Ikeda, Kazuhiko Nishida, Makoto Arita, Osamu Yamaguchi, Yasushi Sakata, Kinya Otsu  
Lysophosphatidylserine induces necrosis in pressure overloaded male mouse hearts via G protein coupled receptor 34

Nat Commun. 2023 Jul 31;14(1):4494.

PMID: 37524709

**This antibody (previous batch) has been successfully used in Western blot on Rat:**

Mendez-Garcia C, Trini A, Browne V, Kochansky CJ, Pontiggia L, D'mello AP  
Decreased liver triglyceride content in adult rats exposed to protein restriction during gestation and lactation: Roles of hepatic lipogenesis and lipid utilization in muscle and

adipose tissue

Can J Physiol Pharmacol. 2019 Oct;97(10):952-962

PMID: 31238009

**This antibody (previous batch) has been successfully used in Western blot on Mouse:**

Kumari M, Schoiswohl G, Chitraju C, Paar M, Cornaciu I, Rangrez AY, Wongsiriroj N, Nagy HM, Ivanova PT, Scott SA, Knittelfelder O, Rechberger GN, Birner-Gruenberger R, Eder S, Brown HA, Haemmerle G, Oberer M, Lass A, Kershaw EE, Zimmermann R, Zechner R.

Adiponutrin functions as a nutritionally regulated lysophosphatidic acid acyltransferase.

Cell Metab. 2012 May 2;15(5):691-702.

PMID: 22560221

**This antibody (previous batch) has been successfully used in Western blot on Rat:**

Gustavsson C, Soga T, Wahlström E, Vesterlund M, Azimi A, Norstedt G, Tollet-Egnell P.

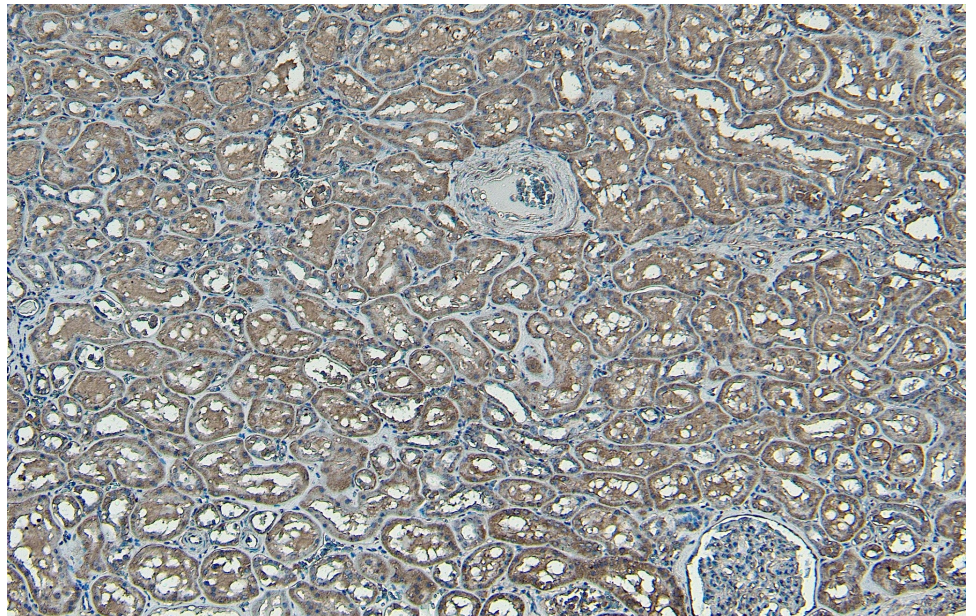
Sex-dependent hepatic transcripts and metabolites in the development of glucose intolerance and insulin resistance in Zucker diabetic fatty rats.

J Mol Endocrinol. 2011 Aug 25;47(2):129-43.

PMID: 21673048

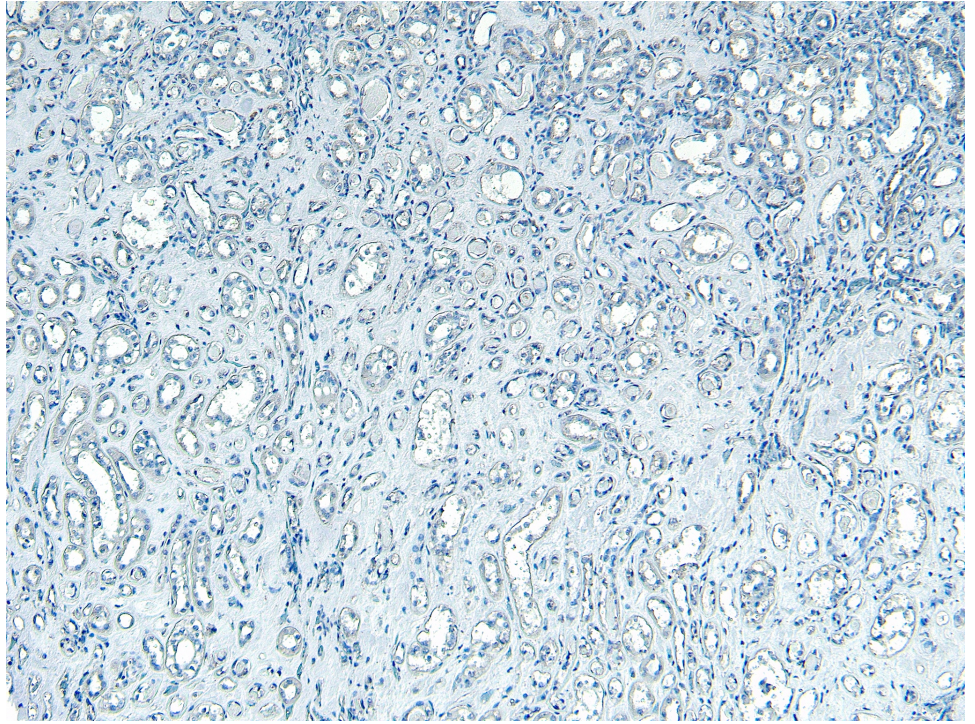


EB08402 (0.03 $\mu$ g/ml) staining of Mouse Adrenal Gland lysate (35 $\mu$ g protein in RIPA buffer). Detected by chemiluminescence.

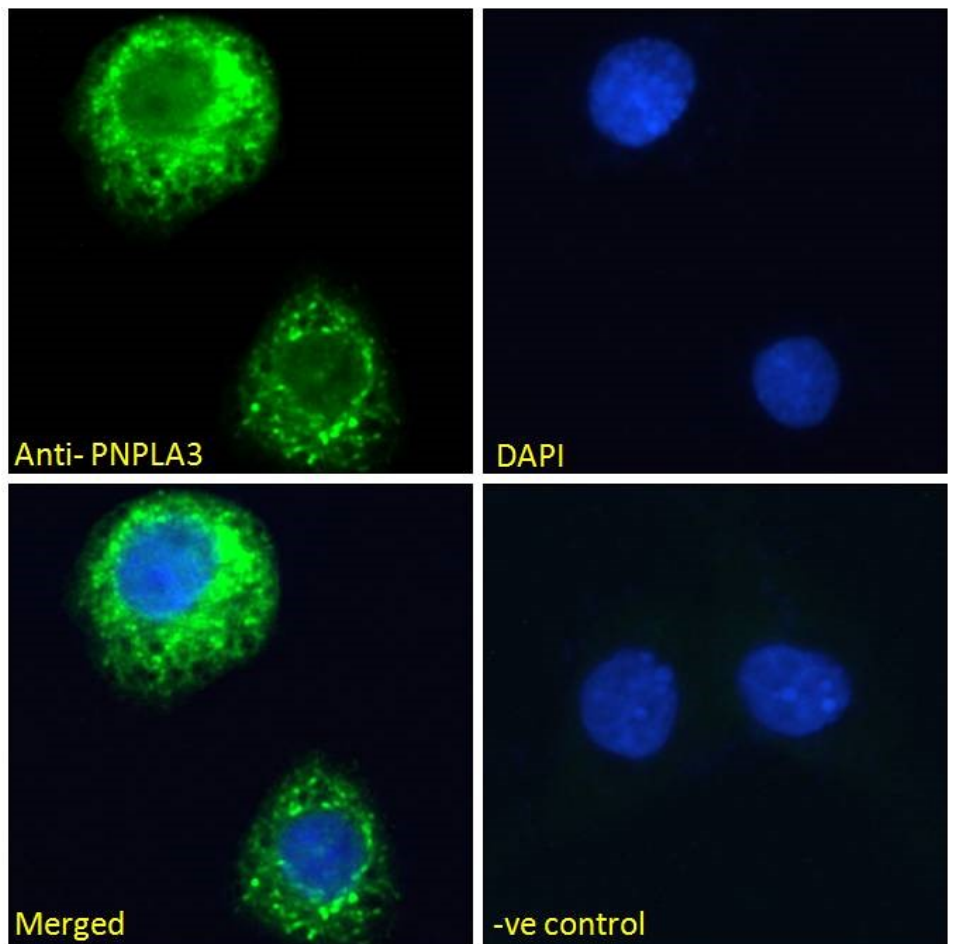


EB08402 (8 $\mu$ g/ml) staining of paraffin embedded Human Kidney. Heat induced antigen retrieval with citrate buffer pH 6, HRP-staining.





EB08402 Negative Control showing staining of paraffin embedded Human Kidney, with no primary antibody.



EB08402 Immunofluorescence analysis of paraformaldehyde fixed HepG2 cells, permeabilized with 0.15% Triton. Primary incubation 1hr (10ug/ml) followed by Alexa Fluor 488 secondary antibody (2ug/ml), showing Mitochondrial staining. The nuclear stain is DAPI (blue). Negative control: Unimmunized goat IgG (10ug/ml) followed by Alexa Fluor 488 secondary antibody (2ug/ml). **This data is from a previous batch, not on sale.**