



SZABO SCANDIC

Part of Europa Biosite

Produktinformation



Forschungsprodukte & Biochemikalien



Zellkultur & Verbrauchsmaterial



Diagnostik & molekulare Diagnostik



Laborgeräte & Service

Weitere Information auf den folgenden Seiten!
See the following pages for more information!



Lieferung & Zahlungsart

siehe unsere [Liefer- und Versandbedingungen](#)

Zuschläge

- Mindermengenzuschlag
- Trockeneiszuschlag
- Gefahrgutzuschlag
- Expressversand

SZABO-SCANDIC HandelsgmbH

Quellenstraße 110, A-1100 Wien

T. +43(0)1 489 3961-0

F. +43(0)1 489 3961-7

mail@szabo-scandic.com

www.szabo-scandic.com

[linkedin.com/company/szaboscandic](https://www.linkedin.com/company/szaboscandic) 



UK Office

Everest Biotech Ltd

Cherwell Innovation Centre
77 Heyford Park
Upper Heyford
Oxfordshire
OX25 5HD
UK

Enquiries:

info@everestbiotech.com

Sales:

sales@everestbiotech.com

Tech support:

support@everestbiotech.com

Tel: +44 (0)1869 238326

Fax: +44 (0)1869 238327

US Office

Everest Biotech c/o Abcore

405 Maple Street, Suite A106
Ramona,
CA 92065
USA

Inquiries:

info@everestbiotech.com

Sales:

usasales@everestbiotech.com

Tech support:

support@everestbiotech.com

Tel: 888-320-4628 (toll-free)

Fax: 888-841-9041

www.everestbiotech.com

**Research Use Only. Not for
diagnostic or therapeutic use.**

EB08615 - Goat Anti-ABCA4 Antibody

Size: 100µg specific antibody in 200µl



Target Protein

Principal Names: ABCA4, ATP-binding cassette, sub-family A (ABC1), member 4, ABC10, ABCR, ARMD2, CORD3, DKFZp781N1972, FFM, RMP, RP19, STGD, STGD1, ATP binding cassette transporter, ATP-binding cassette, sub-family A member 4, ATP-binding transporter, retina-specific, retina-specific ABC transporter, rim protein

Official Symbol: ABCA4

Accession Number(s): NP_000341.2

Human GeneID(s): [24](#)

Immunogen

Peptide with sequence C-KQQTESHDLPLHPR, from the C Terminus of the protein sequence according to NP_000341.2.

Please note the [peptide](#) is available for sale.

Purification and Storage

Purified from goat serum by ammonium sulphate precipitation followed by antigen affinity chromatography using the immunizing peptide.

Supplied at 0.5 mg/ml in Tris saline, 0.02% sodium azide, pH7.3 with 0.5% bovine serum albumin.

Aliquot and store at -20°C. Minimize freezing and thawing.

Applications Tested

Peptide ELISA: antibody detection limit dilution 1:128000.

Immunofluorescence: Strong expression of the protein seen in the Endoplasmic Reticulum of MCF7 and HeLa cells. Recommended concentration: 10µg/ml. This antibody has been successfully used in IF on Mouse, PMID: 32371886.

Species Reactivity

Tested: Human, Mouse

Expected from sequence similarity: Human, Dog

Specific References

This antibody has been successfully used in the following paper:

Anna Matynia, Jun Wang, Sangbae Kim, Yumei Li, Anupama Dimashkie, Zhichun Jiang, Jane Hu, Samuel P. Strom, Roxana A. Radu, Rui Chen, and Michael B. Gorin
Assessing Variant Causality and Severity Using Retinal Pigment Epithelial Cells Derived from Stargardt Disease Patients.

Transl Vis Sci Technol. 2022 Mar 2;11(3):33.

PMID: 35348597

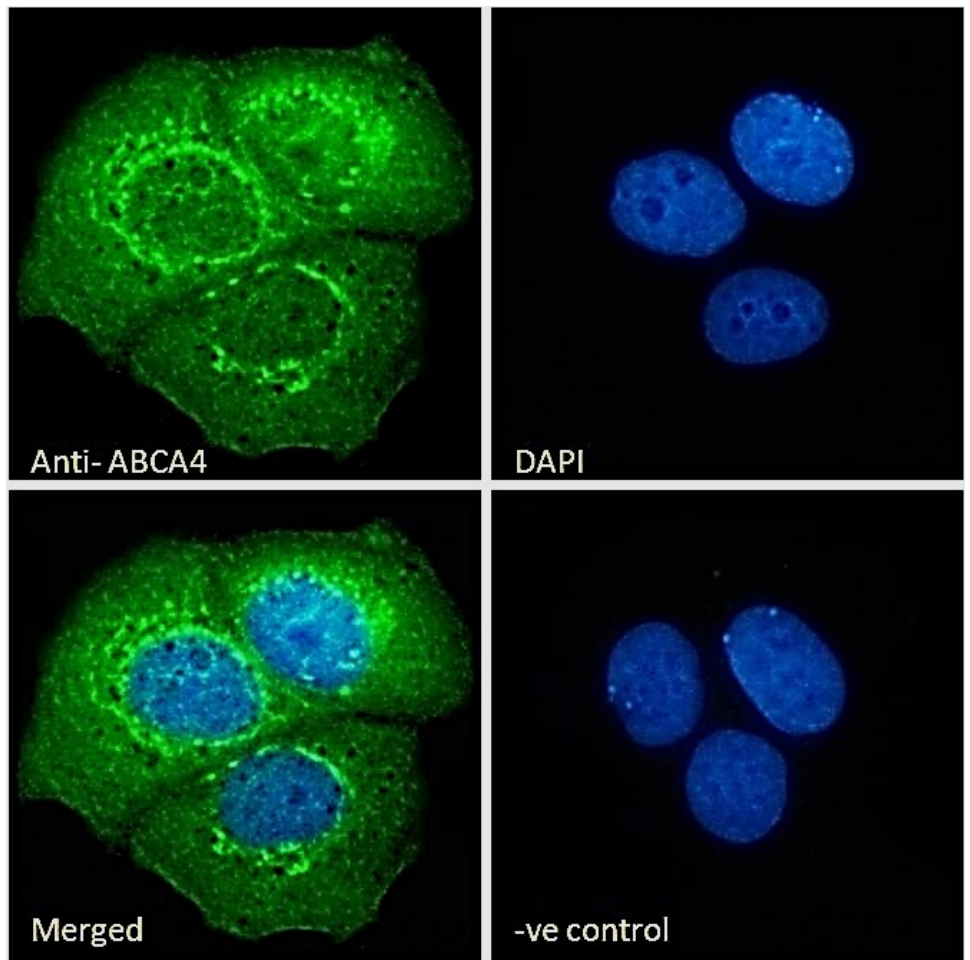
This antibody has been successfully used in IF on Mouse:

Tylor R Lewis, Camilla R Shores, Martha A Cady, Ying Hao, Vadim Y Arshavsky, Marie E Burns

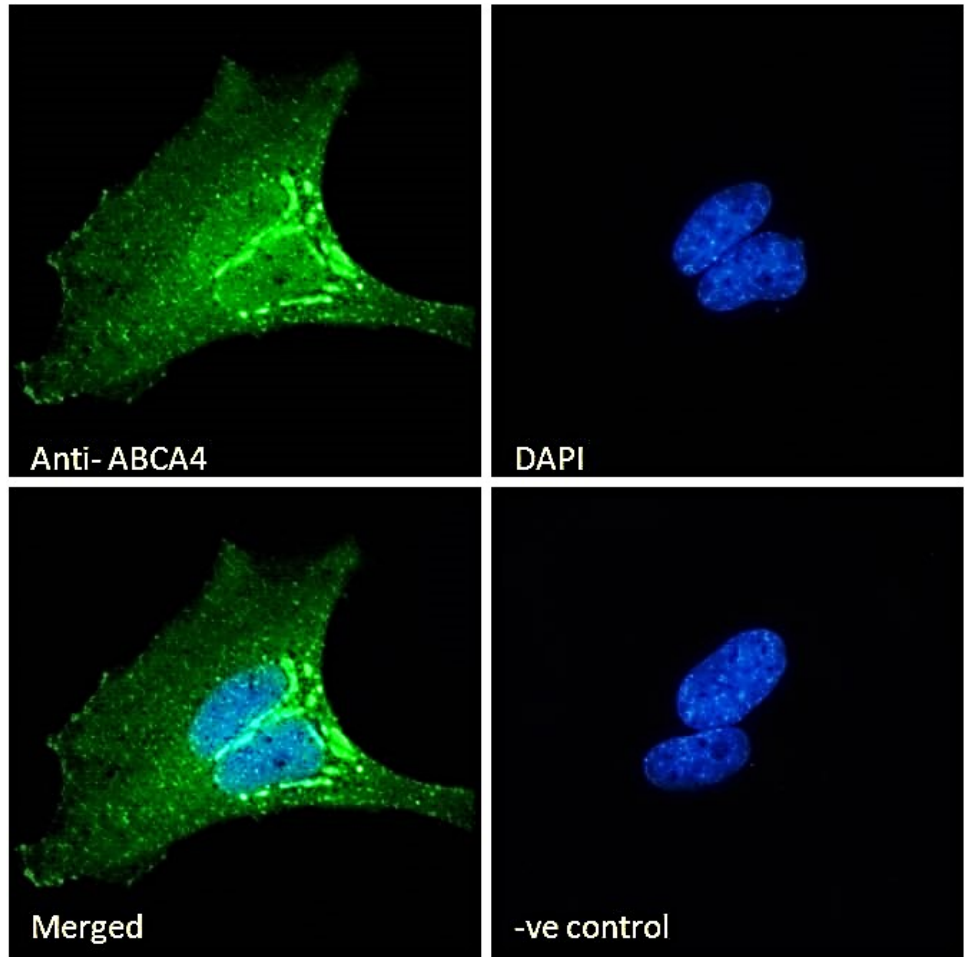
The F220C and F45L rhodopsin mutations identified in retinitis pigmentosa patients do not cause pathology in mice.

Sci Rep. 2020 May 5;10(1):7538.

PMID: 32371886



EB08615 Immunofluorescence analysis of paraformaldehyde fixed MCF7 cells, permeabilized with 0.15% Triton. Primary incubation 1hr (10ug/ml) followed by Alexa Fluor 488 secondary antibody (2ug/ml), showing endoplasmic reticulum staining. The nuclear stain is DAPI (blue). Negative control: Unimmunized goat IgG (10ug/ml) followed by Alexa Fluor 488 secondary antibody (2ug/ml).



EB08615 Immunofluorescence analysis of paraformaldehyde fixed HeLa cells, permeabilized with 0.15% Triton. Primary incubation 1hr (10ug/ml) followed by Alexa Fluor 488 secondary antibody (2ug/ml), showing endoplasmic reticulum staining. The nuclear stain is DAPI (blue). Negative control: Unimmunized goat IgG (10ug/ml) followed by Alexa Fluor 488 secondary antibody (2ug/ml).