



# SZABO SCANDIC

Part of Europa Biosite

## Produktinformation



Forschungsprodukte & Biochemikalien



Zellkultur & Verbrauchsmaterial



Diagnostik & molekulare Diagnostik



Laborgeräte & Service

Weitere Information auf den folgenden Seiten!  
See the following pages for more information!



### Lieferung & Zahlungsart

siehe unsere [Liefer- und Versandbedingungen](#)

### Zuschläge

- Mindermengenzuschlag
- Trockeneiszuschlag
- Gefahrgutzuschlag
- Expressversand

### SZABO-SCANDIC HandelsgmbH

Quellenstraße 110, A-1100 Wien

T. +43(0)1 489 3961-0

F. +43(0)1 489 3961-7

[mail@szabo-scandic.com](mailto:mail@szabo-scandic.com)

[www.szabo-scandic.com](http://www.szabo-scandic.com)

[linkedin.com/company/szaboscandic](https://www.linkedin.com/company/szaboscandic) 



## UK Office

### Everest Biotech Ltd

Cherwell Innovation Centre  
77 Heyford Park  
Upper Heyford  
Oxfordshire  
OX25 5HD  
UK

Enquiries:

[info@everestbiotech.com](mailto:info@everestbiotech.com)

Sales:

[sales@everestbiotech.com](mailto:sales@everestbiotech.com)

Tech support:

[support@everestbiotech.com](mailto:support@everestbiotech.com)

Tel: +44 (0)1869 238326

Fax: +44 (0)1869 238327

## US Office

### Everest Biotech c/o Abcore

405 Maple Street, Suite A106  
Ramona,  
CA 92065  
USA

Inquiries:

[info@everestbiotech.com](mailto:info@everestbiotech.com)

Sales:

[usasales@everestbiotech.com](mailto:usasales@everestbiotech.com)

Tech support:

[support@everestbiotech.com](mailto:support@everestbiotech.com)

Tel: 888-320-4628 (toll-free)

Fax: 888-841-9041

[www.everestbiotech.com](http://www.everestbiotech.com)

**Research Use Only. Not for  
diagnostic or therapeutic use.**

## EB08670 - Goat Anti-PKD1 / Polycystin 1 Antibody

Size: 100µg specific antibody in 200µl



### Target Protein

**Principal Names:** PKD1, polycystic kidney disease 1 (autosomal dominant), PBP, polycystic kidney disease-associated protein, polycystin 1

**Official Symbol:** PKD1

**Accession Number(s):** NP\_001009944.1; NP\_000287.2

**Human GeneID(s):** [5310](#)

**Important Comments:** This antibody is expected to recognize both reported isoforms (NP\_001009944.1 and NP\_000287.2).

### Immunogen

Peptide with sequence C-RTPLRAKNKVHP, from the C Terminus of the protein sequence according to NP\_001009944.1; NP\_000287.2.

Please note the [peptide](#) is available for sale.

### Purification and Storage

Purified from goat serum by ammonium sulphate precipitation followed by antigen affinity chromatography using the immunizing peptide.

Supplied at 0.5 mg/ml in Tris saline, 0.02% sodium azide, pH7.3 with 0.5% bovine serum albumin.

Aliquot and store at -20°C. Minimize freezing and thawing.

### Applications Tested

**Peptide ELISA:** antibody detection limit dilution 1:64000.

**IHC:** In paraffin embedded Human Kidney shows textured cytoplasmic staining towards the basal membrane in PCT. Recommended concentration: 3-5µg/ml. Paraffin embedded Human Spleen. Recommended concentration: 3.75µg/ml.

**Immunoprecipitation:** This antibody was successfully used on Human (PMID:25574838, and PMID: 29706351). **Immunofluorescence:** This antibody was successfully used in IF on Human (Durand et al, Sci Rep. 2016 Oct 24;6:35963, PMID: 27775029).

### Species Reactivity

**Tested:** Human

**Expected from sequence similarity:** Human

### Specific References

**This antibody has been successfully used in IP on Human:**

Cornec-Le Gall E, Olson RJ, Besse W, Heyer CM, Gainullin VG, Smith JM, Audrézet MP, Hopp K, Porath B, Shi B, Baheti S, Senum SR, Arroyo J, Madsen CD, Férec C, Joly D, Jouret F, Fikri-Benbrahim O, Charasse C, Coulibaly JM, Yu AS, Khalili K, Pei Y, Somlo S, Le Meur Y, Torres VE; Genkyst Study Group; HALT Progression of Polycystic Kidney Disease Group; Consortium for Radiologic Imaging Studies of Polycystic KidneyDisease, Harris PC.

Monoallelic Mutations to DNAJB11 Cause Atypical Autosomal-Dominant Polycystic Kidney Disease.

Am J Hum Genet. 2018 May 3;102(5):832-844

PMID: 29706351

**This antibody has been successfully used in IF on Human:**

Durand N, Bastea LI, Long J, Döppler H, Ling K, Storz P.

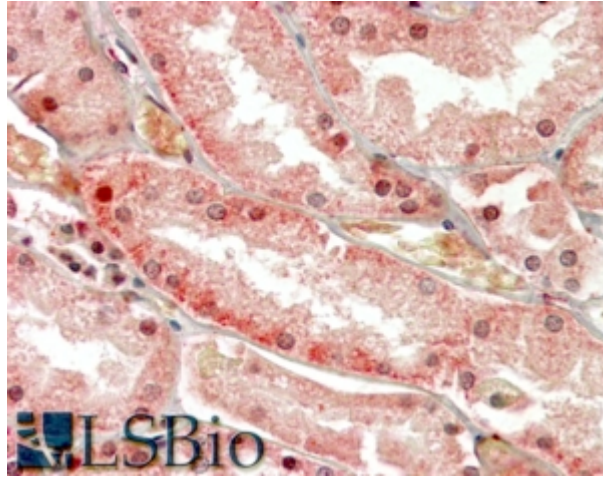
Protein Kinase D1 regulates focal adhesion dynamics and cell adhesion through Phosphatidylinositol  
Sci Rep. 2016 Oct 24;6:35963.  
PMID: 27775029

**This antibody has been successfully used in IHC and IF on Human:**

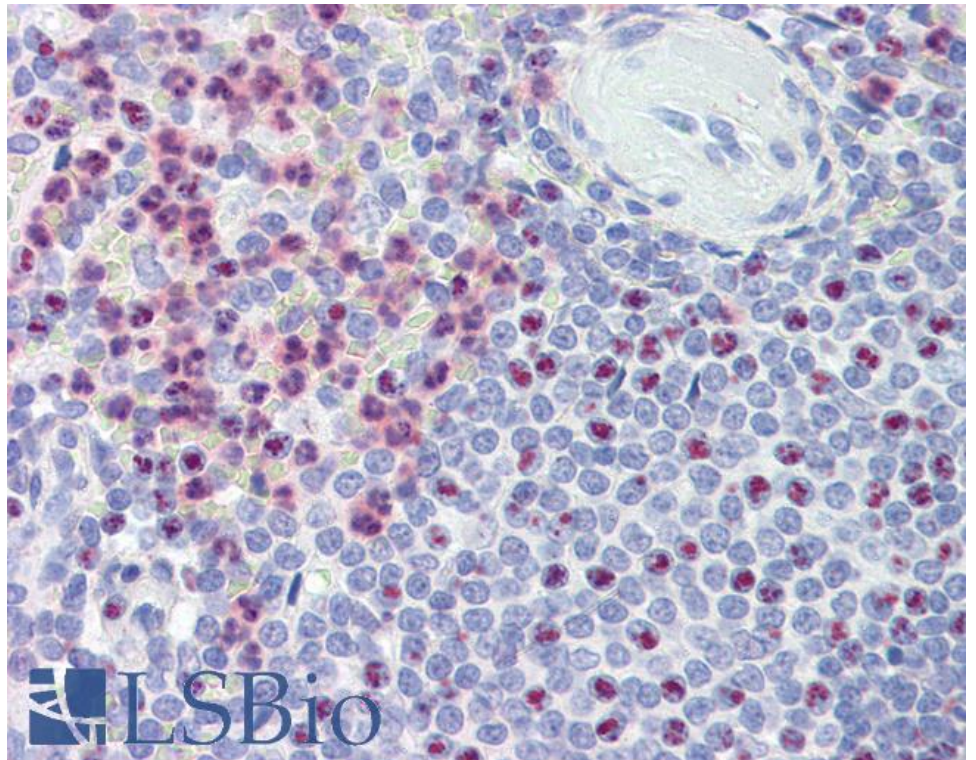
Döppler H, Panayiotou R, Reid EM, Maimo W, Bastea L, Storz P  
The PRKD1 promoter is a target of the KRas-NF- $\kappa$ B pathway in pancreatic cancer  
Sci Rep. 2016 Sep 21;6:33758.  
PMID: 27649783

**This antibody has been successfully used in IP on Human:**

Gainullin VG, Hopp K, Ward CJ, Hommerding CJ, Harris PC.  
Polycystin-1 maturation requires polycystin-2 in a dose-dependent manner.  
J Clin Invest. 2015 Jan 9. pii: 76972.  
PMID: 25574838



EB08670 (3.75µg/ml) staining of paraffin embedded Human Kidney. Steamed antigen retrieval with citrate buffer Ph 6, AP-staining.



EB08670 (3.75µg/ml) staining of paraffin embedded Human Spleen. Steamed antigen retrieval with citrate buffer pH 6, AP-staining.