



# SZABO SCANDIC

Part of Europa Biosite

## Produktinformation



Forschungsprodukte & Biochemikalien



Zellkultur & Verbrauchsmaterial



Diagnostik & molekulare Diagnostik



Laborgeräte & Service

Weitere Information auf den folgenden Seiten!  
See the following pages for more information!



### Lieferung & Zahlungsart

siehe unsere [Liefer- und Versandbedingungen](#)

### Zuschläge

- Mindermengenzuschlag
- Trockeneiszuschlag
- Gefahrgutzuschlag
- Expressversand

### SZABO-SCANDIC HandelsgmbH

Quellenstraße 110, A-1100 Wien

T. +43(0)1 489 3961-0

F. +43(0)1 489 3961-7

[mail@szabo-scandic.com](mailto:mail@szabo-scandic.com)

[www.szabo-scandic.com](http://www.szabo-scandic.com)

[linkedin.com/company/szaboscandic](https://www.linkedin.com/company/szaboscandic) 



## UK Office

### Everest Biotech Ltd

Cherwell Innovation Centre  
77 Heyford Park  
Upper Heyford  
Oxfordshire  
OX25 5HD  
UK

Enquiries:

[info@everestbiotech.com](mailto:info@everestbiotech.com)

Sales:

[sales@everestbiotech.com](mailto:sales@everestbiotech.com)

Tech support:

[support@everestbiotech.com](mailto:support@everestbiotech.com)

Tel: +44 (0)1869 238326

Fax: +44 (0)1869 238327

## US Office

### Everest Biotech c/o Abcore

405 Maple Street, Suite A106  
Ramona,  
CA 92065  
USA

Inquiries:

[info@everestbiotech.com](mailto:info@everestbiotech.com)

Sales:

[usasales@everestbiotech.com](mailto:usasales@everestbiotech.com)

Tech support:

[support@everestbiotech.com](mailto:support@everestbiotech.com)

Tel: 888-320-4628 (toll-free)

Fax: 888-841-9041

[www.everestbiotech.com](http://www.everestbiotech.com)

**Research Use Only. Not for  
diagnostic or therapeutic use.**

## EB08821 - Goat Anti-CACNA1C Antibody

Size: 100µg specific antibody in 200µl



### Target Protein

**Principal Names:** CACNA1C, calcium channel, voltage-dependent, L type, alpha 1C subunit, CACH2, CACN2, CACNL1A1, CCHL1A1, CaV1.2, MGC120730, TS, DHPR, alpha-1 subunit, calcium channel, L type, alpha 1 polypeptide, isoform 1, cardiac muscle, calcium channel, cardiac dihydropyridine-sensitive, alpha-1 subunit, voltage-dependent L-type calcium channel alpha 1C subunit, voltage-gated L-type calcium channel Cav1.2 alpha 1 subunit, splice variant 10\*, voltage-gated calcium channel alpha subunit Cav1.2

**Official Symbol:** CACNA1C

**Accession Number(s):** NP\_000710.5; NP\_955630.2; NP\_001161097.1; NP\_001123299.1; NP\_001123301.1; NP\_001161096.1; NP\_001123302.1; NP\_001123303.1 and more

**Human GeneID(s):** [775](#)

**Important Comments:** This antibody is expected to recognise all reported human isoforms.

### Immunogen

Peptide with sequence C-RARGRPSEELQD, from the C Terminus of the protein sequence according to NP\_000710.5; NP\_955630.2; NP\_001161097.1; NP\_001123299.1; NP\_001123301.1; NP\_001161096.1; NP\_001123302.1; NP\_001123303.1 and more.

Please note the [peptide](#) is available for sale.

### Purification and Storage

Purified from goat serum by ammonium sulphate precipitation followed by antigen affinity chromatography using the immunizing peptide.

Supplied at 0.5 mg/ml in Tris saline, 0.02% sodium azide, pH7.3 with 0.5% bovine serum albumin.

Aliquot and store at -20°C. Minimize freezing and thawing.

### Applications Tested

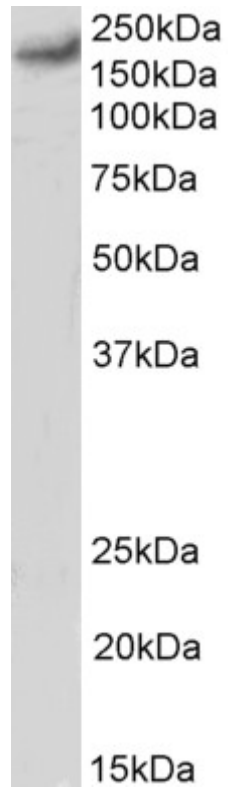
**Peptide ELISA:** antibody detection limit dilution 1:64000.

**Western blot:** Approx. 200kDa band observed in Human Heart lysate (calculated MW of 240kDa according to NP\_000710.5). Recommended concentration: 1.0-3.0µg/ml.

### Species Reactivity

**Tested:** Human

**Expected from sequence similarity:** Human



EB08821 (1 $\mu$ g/ml) staining of Human Heart lysate (35 $\mu$ g protein in RIPA buffer). Primary incubation was 1 hour. Detected by chemiluminescence.