



# SZABO SCANDIC

Part of Europa Biosite

## Produktinformation



Forschungsprodukte & Biochemikalien



Zellkultur & Verbrauchsmaterial



Diagnostik & molekulare Diagnostik



Laborgeräte & Service

Weitere Information auf den folgenden Seiten!  
See the following pages for more information!



### Lieferung & Zahlungsart

siehe unsere [Liefer- und Versandbedingungen](#)

### Zuschläge

- Mindermengenzuschlag
- Trockeneiszuschlag
- Gefahrgutzuschlag
- Expressversand

### SZABO-SCANDIC HandelsgmbH

Quellenstraße 110, A-1100 Wien

T. +43(0)1 489 3961-0

F. +43(0)1 489 3961-7

[mail@szabo-scandic.com](mailto:mail@szabo-scandic.com)

[www.szabo-scandic.com](http://www.szabo-scandic.com)

[linkedin.com/company/szaboscandic](https://www.linkedin.com/company/szaboscandic) 



## UK Office

### Everest Biotech Ltd

Cherwell Innovation Centre  
77 Heyford Park  
Upper Heyford  
Oxfordshire  
OX25 5HD  
UK

Enquiries:

[info@everestbiotech.com](mailto:info@everestbiotech.com)

Sales:

[sales@everestbiotech.com](mailto:sales@everestbiotech.com)

Tech support:

[support@everestbiotech.com](mailto:support@everestbiotech.com)

Tel: +44 (0)1869 238326

Fax: +44 (0)1869 238327

## US Office

### Everest Biotech c/o Abcore

405 Maple Street, Suite A106  
Ramona,  
CA 92065  
USA

Inquiries:

[info@everestbiotech.com](mailto:info@everestbiotech.com)

Sales:

[usasales@everestbiotech.com](mailto:usasales@everestbiotech.com)

Tech support:

[support@everestbiotech.com](mailto:support@everestbiotech.com)

Tel: 888-320-4628 (toll-free)

Fax: 888-841-9041

[www.everestbiotech.com](http://www.everestbiotech.com)

**Research Use Only. Not for  
diagnostic or therapeutic use.**

## EB08897 - Goat Anti-PCSK6 Antibody

Size: 100µg specific antibody in 200µl



### Target Protein

**Principal Names:** PCSK6, proprotein convertase subtilisin/kexin type 6, PACE4, SPC4, paired basic amino acid cleaving system 4, subtilisin-like proprotein convertase 4, subtilisin-like protease, subtilisin/kexin-like protease PACE4

**Official Symbol:** PCSK6

**Accession Number(s):** NP\_002561.1; NP\_612192.1; NP\_612195.1; NP\_612197.1; NP\_612196.1; NP\_612198.2; NP\_612193.1; NP\_612194.1

**Human GeneID(s):** [5046](#)

**Important Comments:** This antibody is expected to recognize reported isoforms a, b, g and h (NP\_002561.1; NP\_612192.1; NP\_612193.1; NP\_612194.1 resp.).

### Immunogen

Peptide with sequence C-YHTFSAHQSRSR, from the internal region of the protein sequence according to NP\_002561.1; NP\_612192.1; NP\_612195.1; NP\_612197.1; NP\_612196.1; NP\_612198.2; NP\_612193.1; NP\_612194.1.

Please note the [peptide](#) is available for sale.

### Purification and Storage

Purified from goat serum by ammonium sulphate precipitation followed by antigen affinity chromatography using the immunizing peptide.

Supplied at 0.5 mg/ml in Tris saline, 0.02% sodium azide, pH7.3 with 0.5% bovine serum albumin.

Aliquot and store at -20°C. Minimize freezing and thawing.

### Applications Tested

**Peptide ELISA:** antibody detection limit dilution 1:32000.

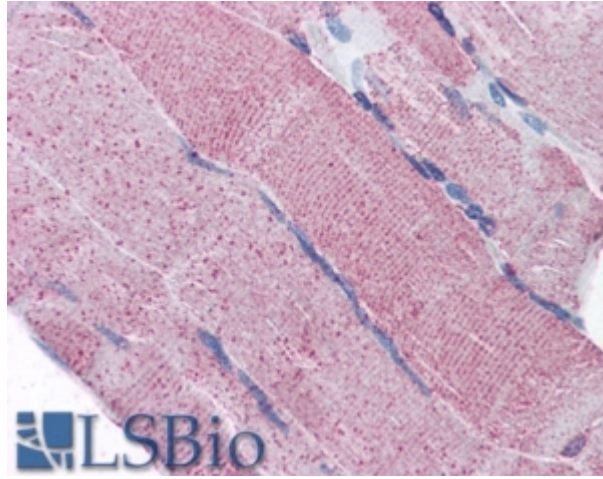
**Western blot:** Preliminary experiments gave an approx 40-45 kDa band in Human Brain (Cerebellum) lysates after 0.2 µg/ml antibody staining. Please note that currently we cannot find an explanation in the literature for the band we observe given the calculated size of 106 kDa according to NP\_002561.1. The 40-45 kDa band was successfully blocked by incubation with the immunizing peptide.

**IHC:** Paraffin embedded Human Skeletal Muscle and Kidney. Recommended concentration: 5µg/ml.

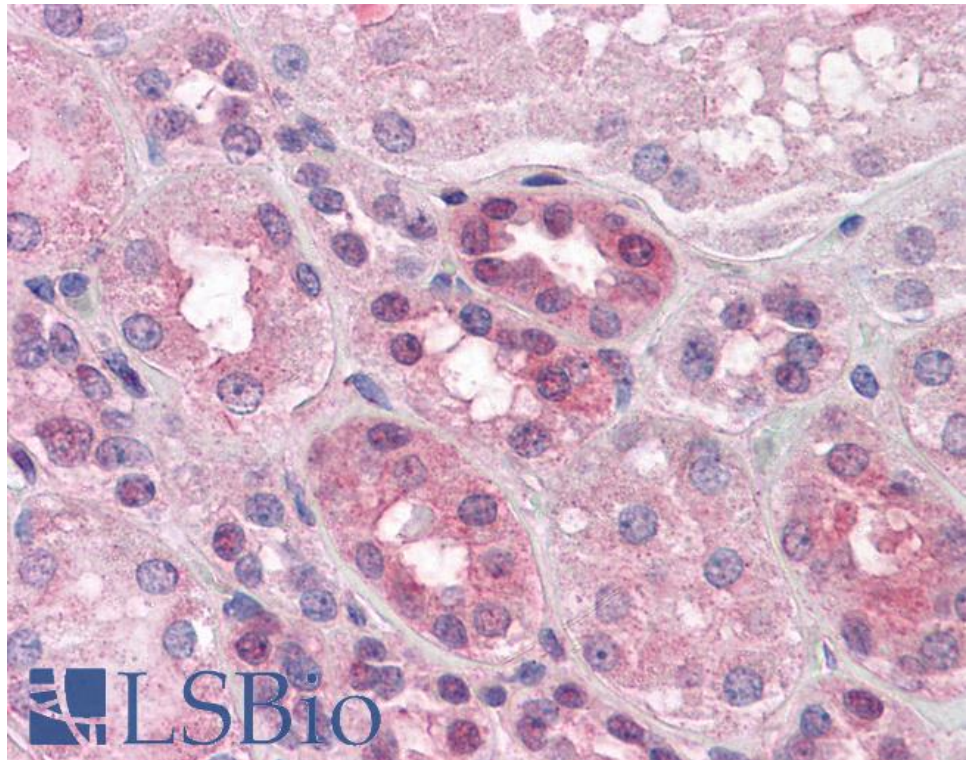
### Species Reactivity

**Tested:** Human

**Expected from sequence similarity:** Human



EB08897 (5µg/ml) staining of paraffin embedded Human Skeletal Muscle. Steamed antigen retrieval with citrate buffer pH 6, AP-staining.



EB08897 (5µg/ml) staining of paraffin embedded Human Kidney. Steamed antigen retrieval with citrate buffer pH 6, AP-staining.