



SZABO SCANDIC

Part of Europa Biosite

Produktinformation



Forschungsprodukte & Biochemikalien



Zellkultur & Verbrauchsmaterial



Diagnostik & molekulare Diagnostik



Laborgeräte & Service

Weitere Information auf den folgenden Seiten!
See the following pages for more information!



Lieferung & Zahlungsart

siehe unsere [Liefer- und Versandbedingungen](#)

Zuschläge

- Mindermengenzuschlag
- Trockeneiszuschlag
- Gefahrgutzuschlag
- Expressversand

SZABO-SCANDIC HandelsgmbH

Quellenstraße 110, A-1100 Wien

T. +43(0)1 489 3961-0

F. +43(0)1 489 3961-7

mail@szabo-scandic.com

www.szabo-scandic.com

[linkedin.com/company/szaboscandic](https://www.linkedin.com/company/szaboscandic) 



UK Office

Everest Biotech Ltd

Cherwell Innovation Centre
77 Heyford Park
Upper Heyford
Oxfordshire
OX25 5HD
UK

Enquiries:

info@everestbiotech.com

Sales:

sales@everestbiotech.com

Tech support:

support@everestbiotech.com

Tel: +44 (0)1869 238326

Fax: +44 (0)1869 238327

US Office

Everest Biotech c/o Abcore

405 Maple Street, Suite A106
Ramona,
CA 92065
USA

Inquiries:

info@everestbiotech.com

Sales:

usasales@everestbiotech.com

Tech support:

support@everestbiotech.com

Tel: 888-320-4628 (toll-free)

Fax: 888-841-9041

www.everestbiotech.com

**Research Use Only. Not for
diagnostic or therapeutic use.**

EB08912 - Goat Anti-apolipoprotein A-IV (mouse) Antibody

Size: 100µg specific antibody in 200µl



Target Protein

Principal Names: ApoA4, apolipoprotein A-IV, ApoA-4

Official Symbol: ApoA4

Accession Number(s): NP_031494.2

Non-Human GeneID(s): 11808 (mouse)

Immunogen

Peptide with sequence C-QETERVKKEIKKELED, from the internal region of the protein sequence according to NP_031494.2.

Please note the [peptide](#) is available for sale.

Purification and Storage

Purified from goat serum by ammonium sulphate precipitation followed by antigen affinity chromatography using the immunizing peptide.

Supplied at 0.5 mg/ml in Tris saline, 0.02% sodium azide, pH7.3 with 0.5% bovine serum albumin.

Aliquot and store at -20°C. Minimize freezing and thawing.

Applications Tested

Peptide ELISA: antibody detection limit dilution 1:32000.

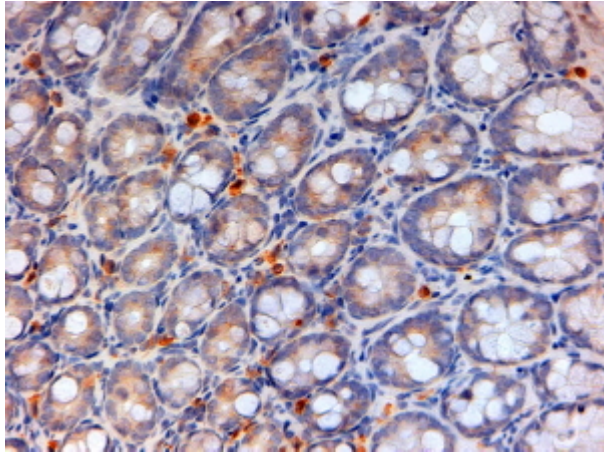
Western blot: Preliminary experiments in Mouse and Rat Liver lysates gave no specific signal but low background (at antibody concentration up to 1µg/ml).

IHC: In paraffin embedded Mouse Colon shows staining of cells between the villi, consistent with the observations with the related EB07581. Recommended concentration: 2-4µg/ml.

Species Reactivity

Tested: Mouse

Expected from sequence similarity: Mouse, Rat



EB08912 (2 μ g/ml) staining of paraffin embedded Mouse Colon. Steamed antigen retrieval with citrate buffer pH 6, HRP-staining.