



SZABO SCANDIC

Part of Europa Biosite

Produktinformation



Forschungsprodukte & Biochemikalien



Zellkultur & Verbrauchsmaterial



Diagnostik & molekulare Diagnostik



Laborgeräte & Service

Weitere Information auf den folgenden Seiten!
See the following pages for more information!



Lieferung & Zahlungsart

siehe unsere [Liefer- und Versandbedingungen](#)

Zuschläge

- Mindermengenzuschlag
- Trockeneiszuschlag
- Gefahrgutzuschlag
- Expressversand

SZABO-SCANDIC HandelsgmbH

Quellenstraße 110, A-1100 Wien

T. +43(0)1 489 3961-0

F. +43(0)1 489 3961-7

mail@szabo-scandic.com

www.szabo-scandic.com

[linkedin.com/company/szaboscandic](https://www.linkedin.com/company/szaboscandic) 



UK Office

Everest Biotech Ltd

Cherwell Innovation Centre
77 Heyford Park
Upper Heyford
Oxfordshire
OX25 5HD
UK

Enquiries:

info@everestbiotech.com

Sales:

sales@everestbiotech.com

Tech support:

support@everestbiotech.com

Tel: +44 (0)1869 238326

Fax: +44 (0)1869 238327

US Office

Everest Biotech c/o Abcore

405 Maple Street, Suite A106
Ramona,
CA 92065
USA

Inquiries:

info@everestbiotech.com

Sales:

usasales@everestbiotech.com

Tech support:

support@everestbiotech.com

Tel: 888-320-4628 (toll-free)

Fax: 888-841-9041

www.everestbiotech.com

**Research Use Only. Not for
diagnostic or therapeutic use.**

EB08920 - Goat Anti-Clusterin / ApoJ (mouse) Antibody

Size: 100µg specific antibody in 200µl



Target Protein

Principal Names: ApoJ, clusterin, Clu, AI893575, Cii, D14Ucla3, SP-40, Sgp-2, Sgp2, Sugg-2, Apolipoprotein J, complement lysis inhibitor, testosterone repressed prostate message

Official Symbol: Clu

Accession Number(s): NP_038520.2

Non-Human GeneID(s): 12759 (mouse), 24854 (rat)

Immunogen

Peptide with sequence C-EKALQEYRRKSRAE, from the C Terminus of the protein sequence according to NP_038520.2.

Please note the [peptide](#) is available for sale.

Purification and Storage

Purified from goat serum by ammonium sulphate precipitation followed by antigen affinity chromatography using the immunizing peptide.

Supplied at 0.5 mg/ml in Tris saline, 0.02% sodium azide, pH7.3 with 0.5% bovine serum albumin.

Aliquot and store at -20°C. Minimize freezing and thawing.

Applications Tested

Peptide ELISA: antibody detection limit dilution 1:64000.

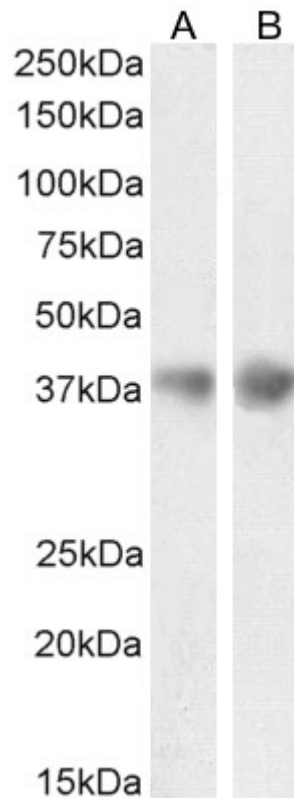
Western blot: Approx. 38kDa band observed in Mouse and Rat Brain lysates.(calculated MW of 51.7kDa according to Mouse NP_038520.2 and 51.4kDa according to Rat XP_006252156.1). This molecular weight is routinely observed by other sources and thought to correspond to the alpha chain of APOJ. Recommended concentration: 0.1-0.3µg/ml. Primary incubation 1 hour at room temperature.

Immunofluorescence: Strong expression of the protein seen in the membranes and cytoplasm of PC12 cells. Recommended concentration: 10µg/ml.

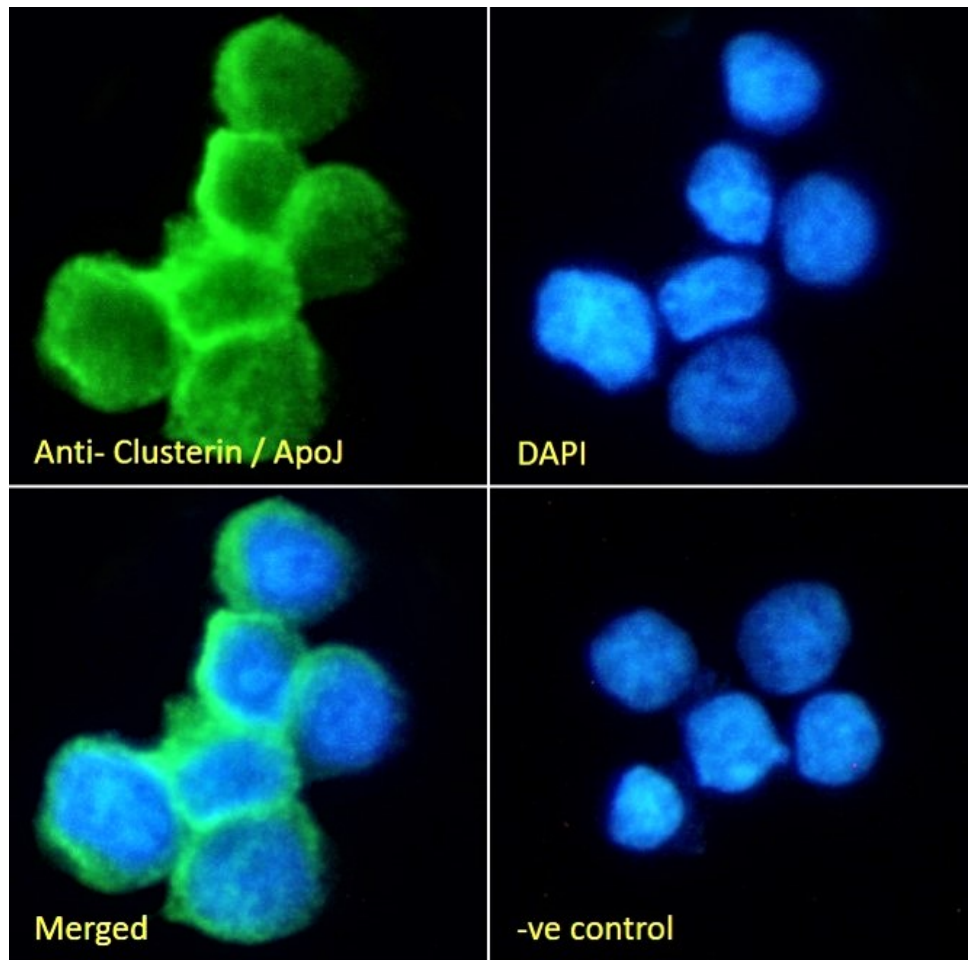
Species Reactivity

Tested: Mouse, Rat

Expected from sequence similarity: Mouse, Rat



EB08920 (0.1µg/ml) staining of Mouse (A) and (0.3µg/ml) Rat (B) Brain lysate (35µg protein in RIPA buffer).
Detected by chemiluminescence.



EB08920 Immunofluorescence analysis of paraformaldehyde fixed PC12 suspension cells, permeabilized with 0.15% Triton. Primary incubation 1hr (10ug/ml) followed by Alexa Fluor 488 secondary antibody (2ug/ml), showing membrane and cytoplasmic staining. The nuclear stain is DAPI (blue). Negative control: Unimmunized goat IgG (10ug/ml) followed by Alexa Fluor 488 secondary antibody (2ug/ml).