



# SZABO SCANDIC

Part of Europa Biosite

## Produktinformation



Forschungsprodukte & Biochemikalien



Zellkultur & Verbrauchsmaterial



Diagnostik & molekulare Diagnostik



Laborgeräte & Service

Weitere Information auf den folgenden Seiten!  
See the following pages for more information!



### Lieferung & Zahlungsart

siehe unsere [Liefer- und Versandbedingungen](#)

### Zuschläge

- Mindermengenzuschlag
- Trockeneiszuschlag
- Gefahrgutzuschlag
- Expressversand

### SZABO-SCANDIC HandelsgmbH

Quellenstraße 110, A-1100 Wien

T. +43(0)1 489 3961-0

F. +43(0)1 489 3961-7

[mail@szabo-scandic.com](mailto:mail@szabo-scandic.com)

[www.szabo-scandic.com](http://www.szabo-scandic.com)

[linkedin.com/company/szaboscandic](https://www.linkedin.com/company/szaboscandic) 



## UK Office

### Everest Biotech Ltd

Cherwell Innovation Centre  
77 Heyford Park  
Upper Heyford  
Oxfordshire  
OX25 5HD  
UK

Enquiries:

[info@everestbiotech.com](mailto:info@everestbiotech.com)

Sales:

[sales@everestbiotech.com](mailto:sales@everestbiotech.com)

Tech support:

[support@everestbiotech.com](mailto:support@everestbiotech.com)

Tel: +44 (0)1869 238326

Fax: +44 (0)1869 238327

## US Office

### Everest Biotech c/o Abcore

405 Maple Street, Suite A106  
Ramona,  
CA 92065  
USA

Inquiries:

[info@everestbiotech.com](mailto:info@everestbiotech.com)

Sales:

[usasales@everestbiotech.com](mailto:usasales@everestbiotech.com)

Tech support:

[support@everestbiotech.com](mailto:support@everestbiotech.com)

Tel: 888-320-4628 (toll-free)

Fax: 888-841-9041

[www.everestbiotech.com](http://www.everestbiotech.com)

**Research Use Only. Not for  
diagnostic or therapeutic use.**

## EB08953 - Goat Anti-COG1 Antibody

Size: 100µg specific antibody in 200µl



### Target Protein

**Principal Names:** COG1, component of oligomeric golgi complex 1, CDG2G, DKFZp762L1710, KIAA1381, LDLB, conserved oligomeric Golgi complex protein 1, low density lipoprotein receptor defect B complementing

**Official Symbol:** COG1

**Accession Number(s):** NP\_061184.1

**Human GeneID(s):** [9382](#)

### Immunogen

Peptide with sequence C-KAKSTRNIETKAQ, from the internal region of the protein sequence according to NP\_061184.1.

Please note the [peptide](#) is available for sale.

### Purification and Storage

Purified from goat serum by ammonium sulphate precipitation followed by antigen affinity chromatography using the immunizing peptide.

Supplied at 0.5 mg/ml in Tris saline, 0.02% sodium azide, pH7.3 with 0.5% bovine serum albumin.

Aliquot and store at -20°C. Minimize freezing and thawing.

### Applications Tested

**Peptide ELISA:** antibody detection limit dilution 1:64000.

**Western blot:** Approx. 110kDa band observed in Human Brain (Cerebellum, Amygdala) lysates (calculated MW of 109kDa according to NP\_061184.1). Recommended concentration: 0.1-0.3µg/ml. An additional band of unknown identity was also consistently observed at 45kDa. This band was successfully blocked by incubation with the immunising peptide. Primary incubation was 1 hour.

**Immunofluorescence:** This antibody has been successfully used in IF on Human: Dechtawawat T et al. (2016) PMID: 27108190.

### Species Reactivity

**Tested:** Human

**Expected from sequence similarity:** Human

### Specific Reference

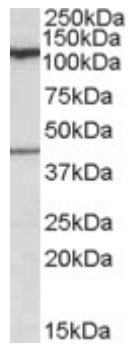
**This antibody has been successfully used in IF on Human:**

Dechtawawat T, Paemanee A, Roytrakul S, Songprakhon P, Limjindaporn T, Yenchitsomanus PT, Saitornuang S, Puttikhunt C, Kasinrerak W, Malasit P, Noisakran S.

Mass spectrometric analysis of host cell proteins interacting with dengue virus nonstructural protein 1 in dengue virus-infected HepG2 cells.

Biochim Biophys Acta. 2016 Sep;1864(9):1270-80.

PMID: 27108190



EB08953 (0.1µg/ml) staining of Human Cerebellum lysate (35µg protein in RIPA buffer). Detected by chemiluminescence.