



SZABO SCANDIC

Part of Europa Biosite

Produktinformation



Forschungsprodukte & Biochemikalien



Zellkultur & Verbrauchsmaterial



Diagnostik & molekulare Diagnostik



Laborgeräte & Service

Weitere Information auf den folgenden Seiten!
See the following pages for more information!



Lieferung & Zahlungsart

siehe unsere [Liefer- und Versandbedingungen](#)

Zuschläge

- Mindermengenzuschlag
- Trockeneiszuschlag
- Gefahrgutzuschlag
- Expressversand

SZABO-SCANDIC HandelsgmbH

Quellenstraße 110, A-1100 Wien

T. +43(0)1 489 3961-0

F. +43(0)1 489 3961-7

mail@szabo-scandic.com

www.szabo-scandic.com

[linkedin.com/company/szaboscandic](https://www.linkedin.com/company/szaboscandic) 



UK Office

Everest Biotech Ltd

Cherwell Innovation Centre
77 Heyford Park
Upper Heyford
Oxfordshire
OX25 5HD
UK

Enquiries:

info@everestbiotech.com

Sales:

sales@everestbiotech.com

Tech support:

support@everestbiotech.com

Tel: +44 (0)1869 238326

Fax: +44 (0)1869 238327

US Office

Everest Biotech c/o Abcore

405 Maple Street, Suite A106
Ramona,
CA 92065
USA

Inquiries:

info@everestbiotech.com

Sales:

usasales@everestbiotech.com

Tech support:

support@everestbiotech.com

Tel: 888-320-4628 (toll-free)

Fax: 888-841-9041

www.everestbiotech.com

**Research Use Only. Not for
diagnostic or therapeutic use.**

EB09041 - Goat Anti-CYP26A1 Antibody

Size: 100µg specific antibody in 200µl



Target Protein

Principal Names: CYP26A1, cytochrome P450, family 26, subfamily A, polypeptide 1, CP26, CYP26, P450RAI, P450RAI1, P450, retinoic acid-inactivating, 1, cytochrome P450, subfamily XXVIA, polypeptide 1, retinoic acid 4-hydroxylase, retinoic acid-metabolizing cytochrome

Official Symbol: CYP26A1

Accession Number(s): NP_000774.2; NP_476498.1

Human GeneID(s): [1592](#)

Important Comments: This antibody is expected to recognize both reported isoforms (NP_000774.2; NP_476498.1)

Immunogen

Peptide with sequence C-NLPARFTHFHGE, from the internal region of the protein sequence according to NP_000774.2; NP_476498.1.

Please note the [peptide](#) is available for sale.

Purification and Storage

Purified from goat serum by ammonium sulphate precipitation followed by antigen affinity chromatography using the immunizing peptide.

Supplied at 0.5 mg/ml in Tris saline, 0.02% sodium azide, pH7.3 with 0.5% bovine serum albumin.

Aliquot and store at -20°C. Minimize freezing and thawing.

Applications Tested

Peptide ELISA: antibody detection limit dilution 1:16000.

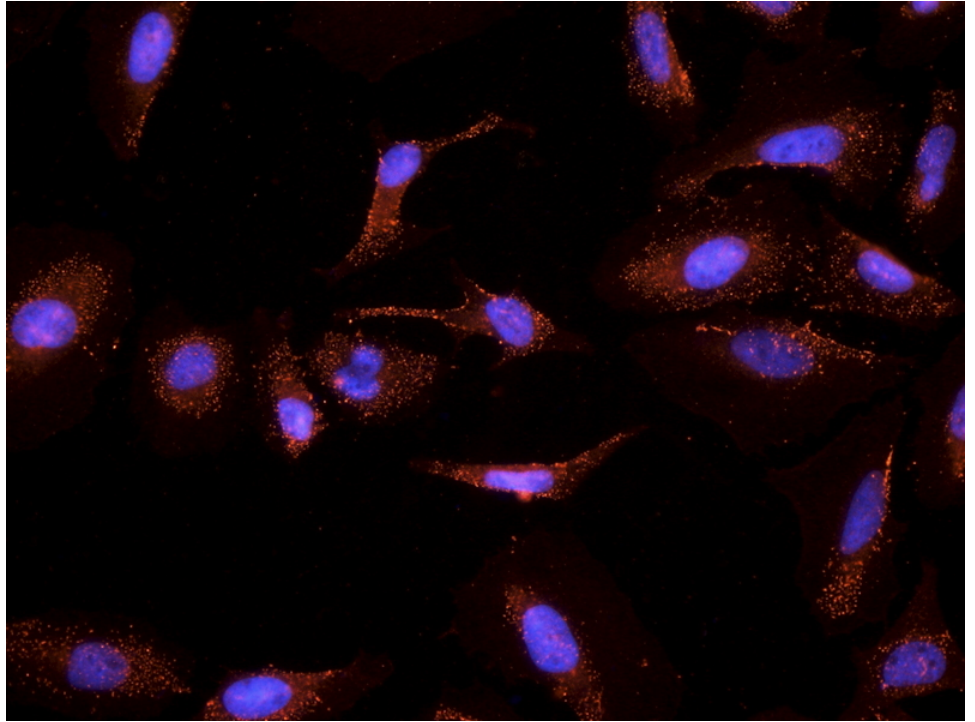
IHC: Paraffin embedded Human Brain (Cortex and Cerebellum). Recommended concentration: 3.75µg/ml.

Immunocytochemistry: ER-staining of PFA-fixed and TX100-treated HeLa cells. Recommended concentration: 2-5ug/ml.

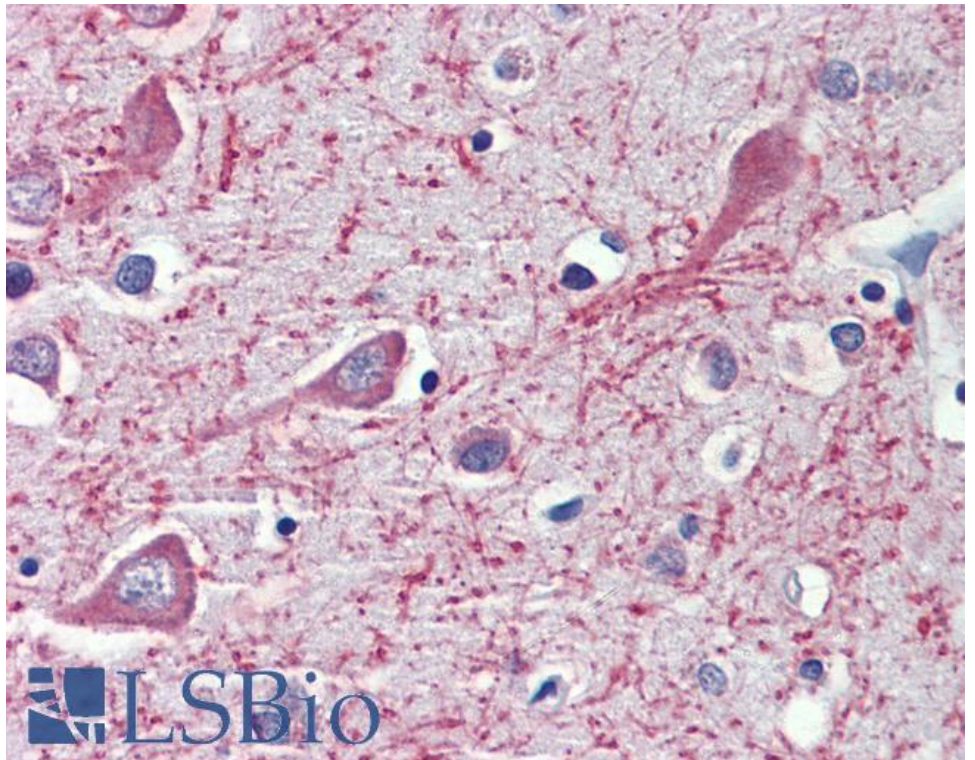
Species Reactivity

Tested: Human

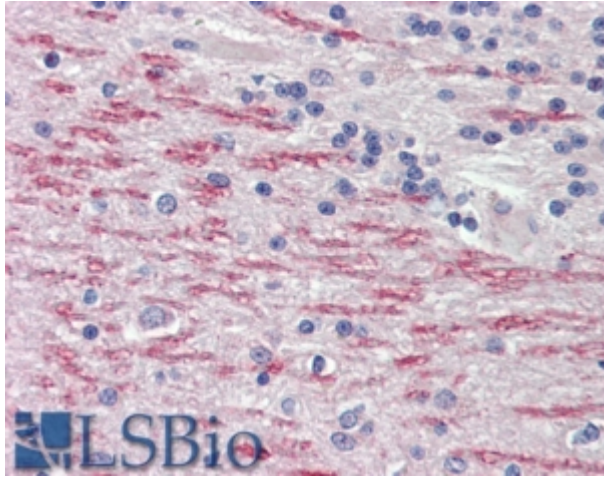
Expected from sequence similarity: Human



EB09041 (2.5 μ g/ml) staining of PFA-fixed and TX100-treated HeLa cells after primary labelling overnight at 4C with DAPI nuclear counterstaining in blue.



EB09041 (3.75 μ g/ml) staining of paraffin embedded Human Cortex. Steamed antigen retrieval with citrate buffer pH 6, AP-staining.



EB09041 (3.75 μ g/ml) staining of paraffin embedded Human Cerebellum. Steamed antigen retrieval with citrate buffer pH 6, AP-staining.